



Scottish Pathology Network

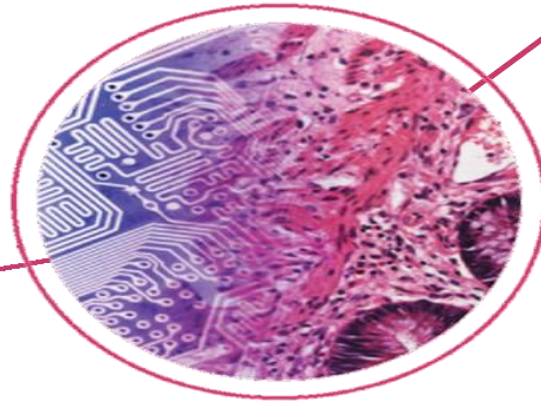
National Managed Diagnostic Network

Isobel Neil
Creating a sustainable Scottish Pathology Service



**Movement to
Regional
Working for
Cellular
Pathology in the
West**





The west of Scotland serves a population of circa 2.7m, covering a wide geographic area of 8,777 square miles; and consisting of urban, rural and island communities.

West Region Laboratory Medicine Delivery Board



- Now established and comprises membership from:
 - NHS Ayrshire & Arran
 - NHS Dumfries & Galloway
 - NHS Forth Valley
 - NHS Greater Glasgow & Clyde
 - NHS Lanarkshire
 - Golden Jubilee National Hospital



West of Scotland Pathology Services

Services are varied in size and scale:

2017/18	GGC	L'Shire	A&A	FV	D&G
Total requests	206984	98259	47999	41880	10363
Total BMS Staff (Histology & Cytology)	82.25	23.37	16.19	15.76	6





SPAN Current Initiatives

Digital Pathology

Voice Recognition / Digital Pathology

National BMS Dissection Training School

Blocks & Slides Storage

Mortuary Services

Evaluating Companion Diagnostics

And more ...

Recognising this national work, how does the region avoid duplication?

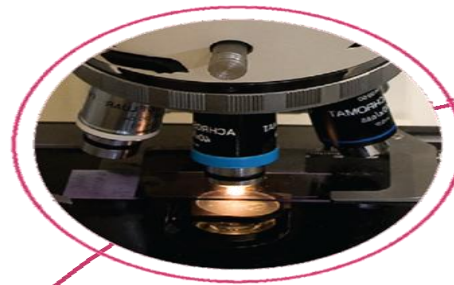
Regional Working for Cellular Pathology

Aiming to be:

- Sustainable; Equitable; Forward thinking; and

Aligned to:

- Wider west of Scotland planning
- National Policies and Strategies e.g. The National Clinical Strategy, Realistic Medicine, Cancer Strategy
- Thinking regionally aligns NHS Scotland with reorganisation in NHS England where there are now 29 Pathology networks, providing services for approximately 2 million population each.





Work in Progress

Mapping to the Laboratories Distributed Model Blueprint:

- Process
- Organisation
- Technology
- Information

Gathering Data on:

- Workforce
- Facilities
- Equipment
- Finance

Key Challenges

Which Model for Cellular Pathology in the west region?

- Are all Laboratories sustainable going forward
- Specialist v General
- Supporting local MDTs
- Exploiting technology
- Fit of Molecular Diagnostics
- Attractive for new recruits to the west





Thank You

Isobel Neil

Isobel.neil@ggc.scot.nhs.uk