



Pathology Training: Past, Present & Future

Marie Mathers

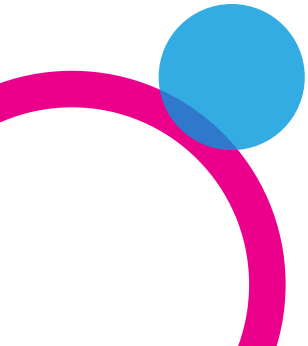
**Consultant Pathologist, Western General Hospital, Edinburgh
Training Programme Director for Pathology, South East Scotland**



**Curriculum
under review!**



1996



Histopathology training – 1990s

- Local recruitment to training posts
- No RCPATH curriculum for pathology training; no formal supervision structure
- Training time 6 to 7 years
- All specimen dissection completed by medical staff
- Independent reporting by senior trainees

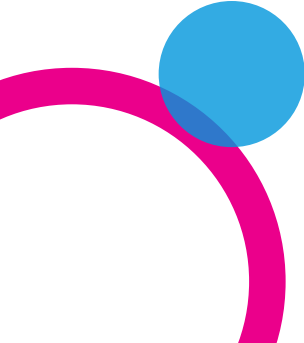


1990s...

- Generalist model of service delivery
- Minimum datasets for cancer specimens first introduced in 1998
- Limited range of immunohistochemical markers in routine diagnostic use
- Molecular techniques - R&D



2018



RUSSIA



CROATIA

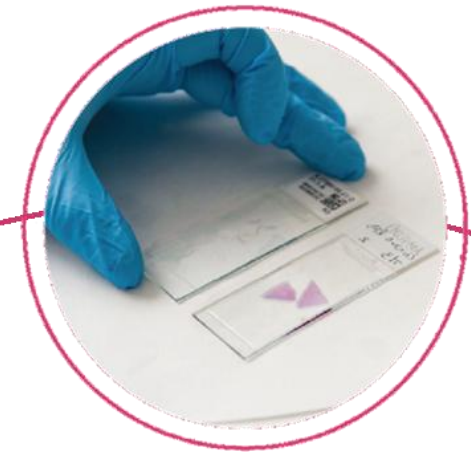
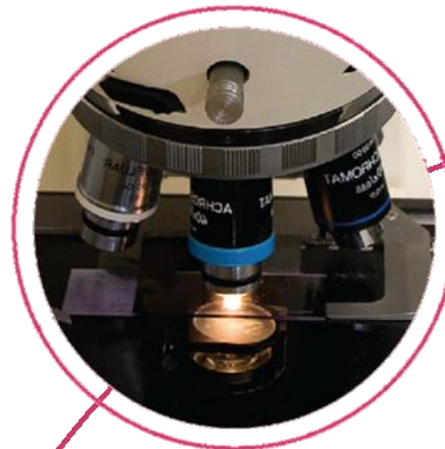
V/S



ENGLAND

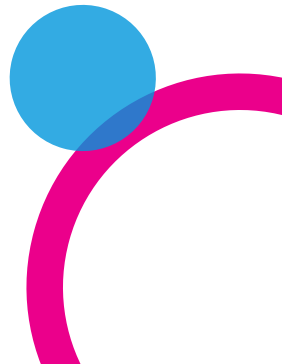
Histopathology training 2018

- National recruitment to run through training posts
- General histopathology training time 5 years
- Forensic, paediatric and neuropathology have separate specialist programmes from ST3 onwards



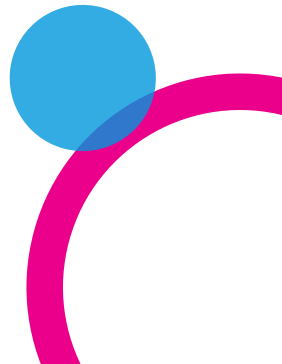
Histopathology training 2018

- Curricula approved by the General Medical Council
- On-line portfolios
- Formal supervision structure
- Quality management of training



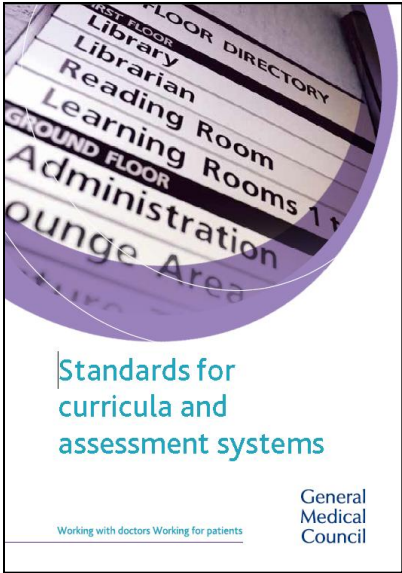
Histopathology training 2018

- Curriculum (2015 onwards) requires independent reporting by trainees
- Training in a specialised setting
- Molecular pathology techniques in routine use

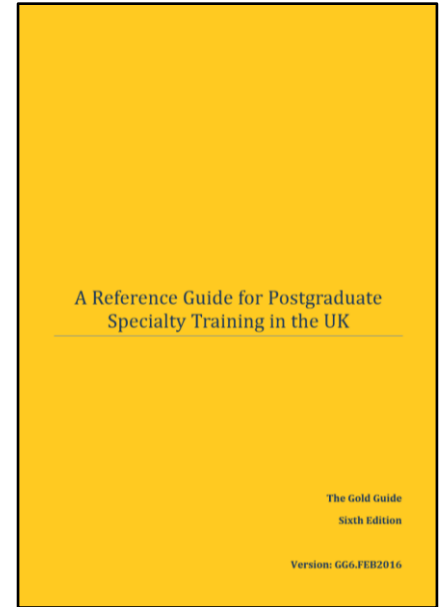




**Curriculum
under review!**



SHAPE OF TRAINING



The Royal College of Pathologists
Pathology: the science behind the cure

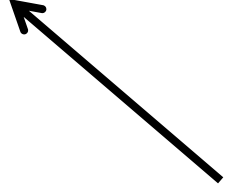
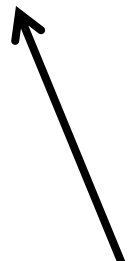
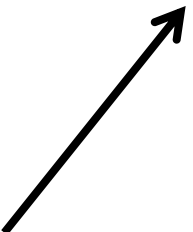
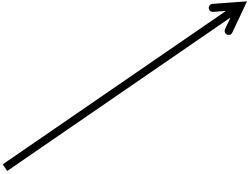
CURRICULUM FOR SPECIALTY TRAINING IN HISTOPATHOLOGY
2015

Histopathology SAC

Trainee Advisory Committee

Histopathology CSTC

Lay Advisory Committee



Curriculum content

Postgraduate medical curricula must include both **GENERIC** (medical professionalism, *Good Medical Practice*)

&

SPECIALTY SPECIFIC content







**Future
Developments?**

Current European
workforce?

Implications for
recruitment?



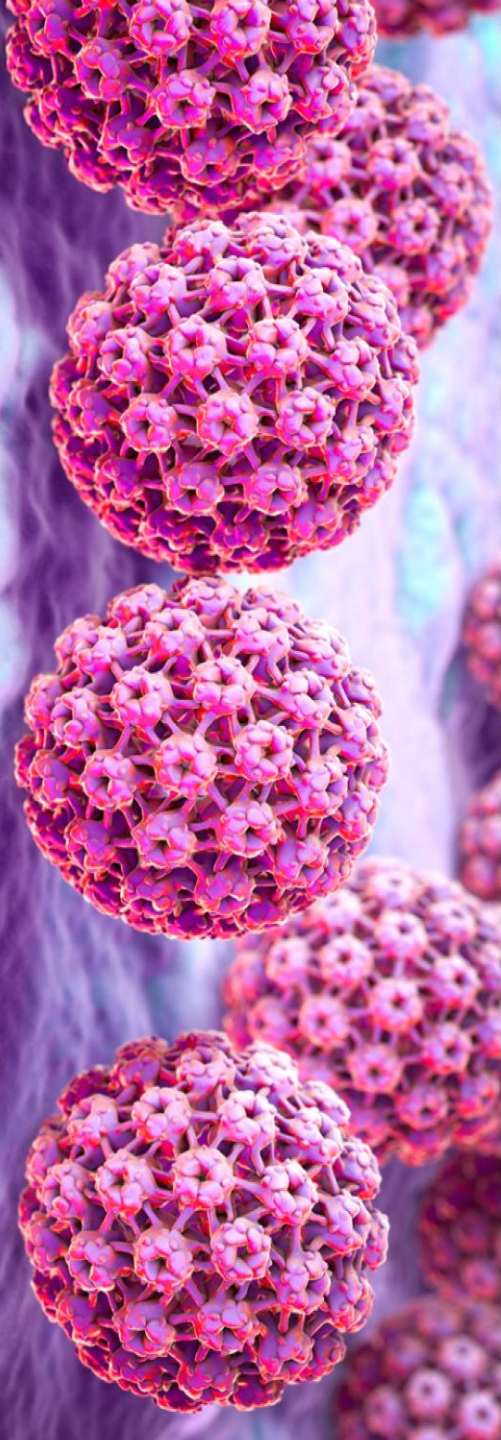


Digital Pathology & Training



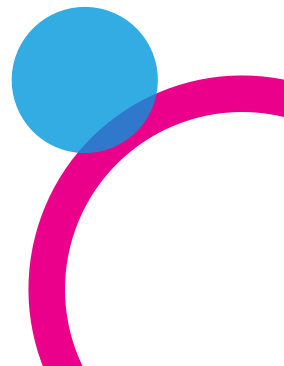
- Acceptability for training – local and remote
- Digital teaching archive
- Trainee validation for independent reporting
- Digital FRCPath?



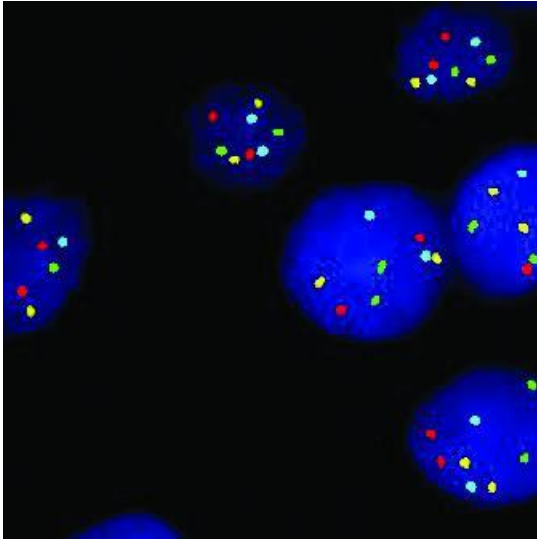


HPV First

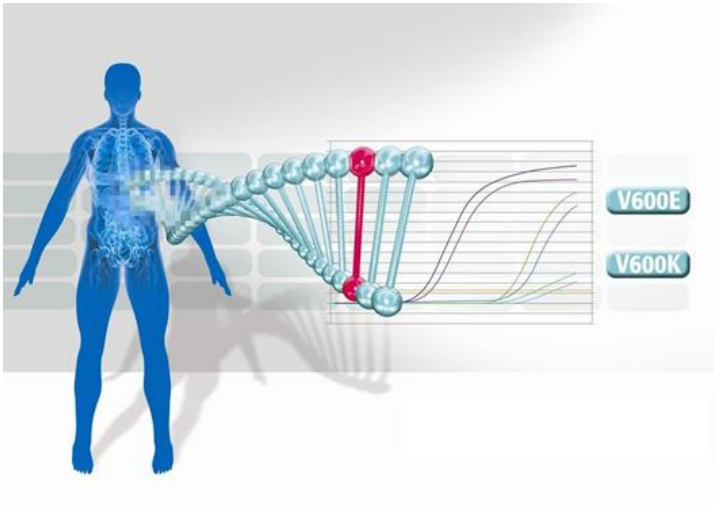
- How do we continue to deliver training for the cervical cytopathology workforce in Scotland?
- Cervical cytology in the general histopathology curriculum?



Molecular Pathology



How do we ensure even delivery of training across Scotland/UK?



BMS Dissection & Reporting



Thank you

marie.mathers@nhs.net