

# EQA circulation 44

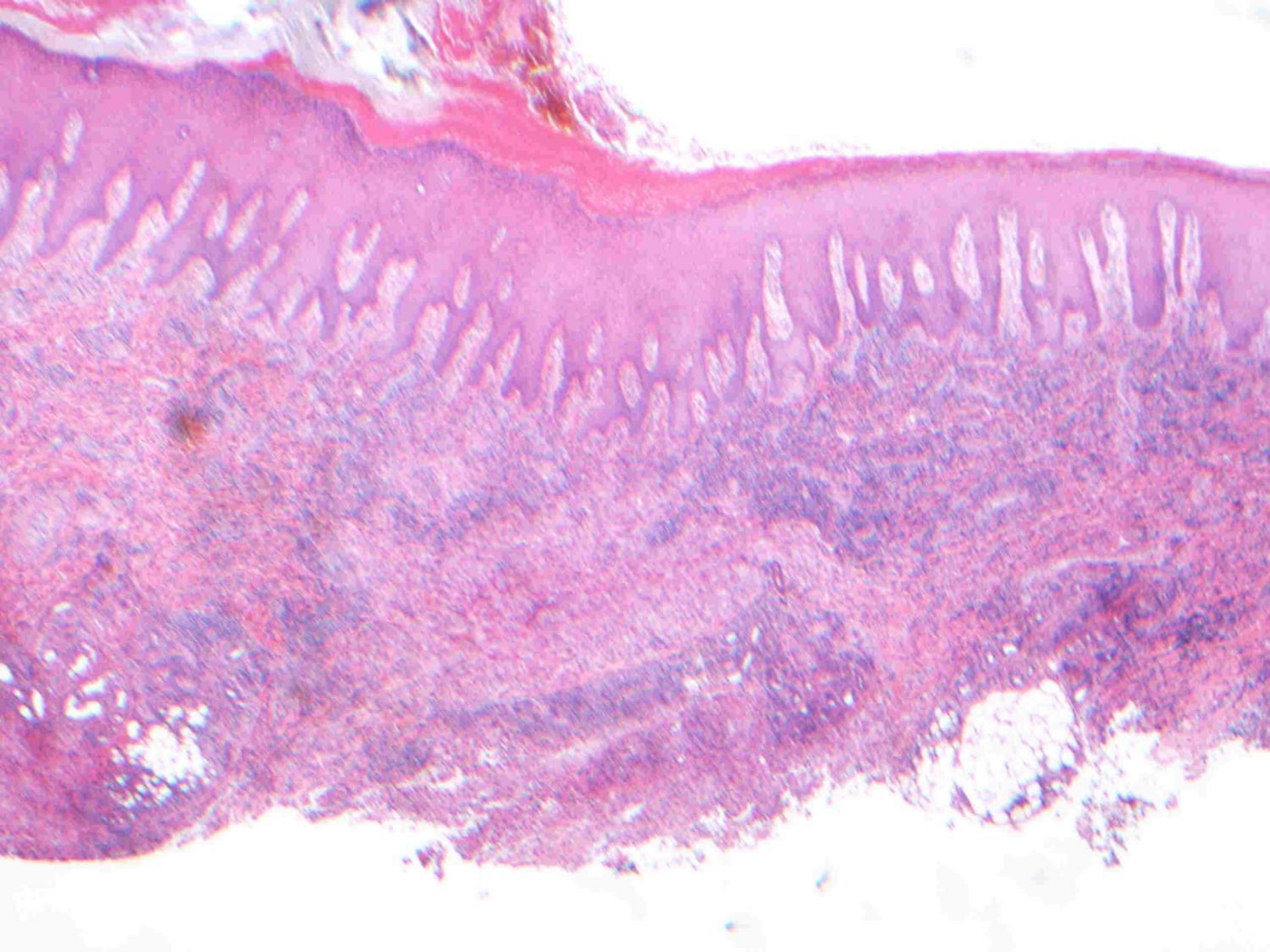
## Educational cases E1 & E2

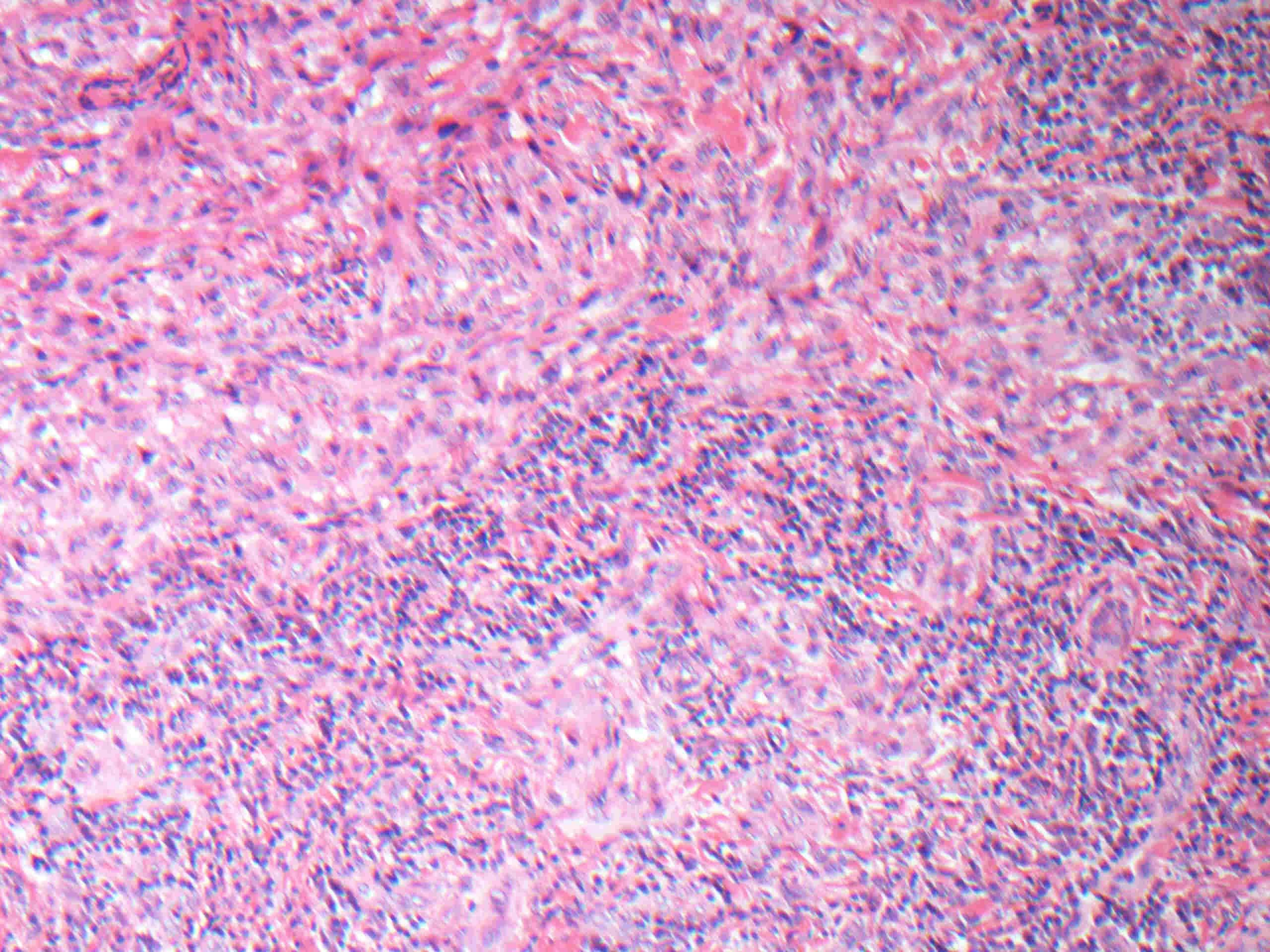
Marie Mathers

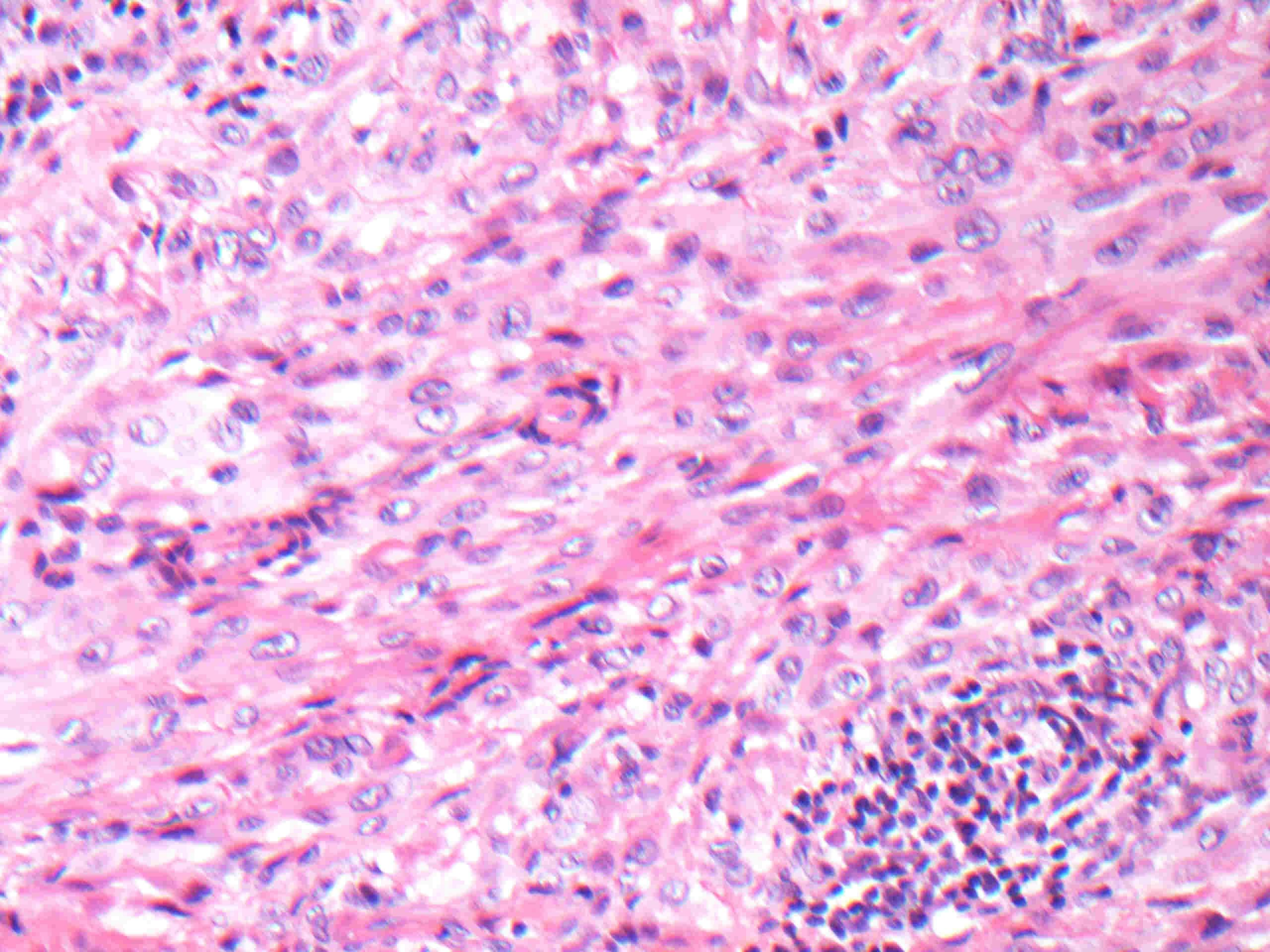
Western General Hospital, Edinburgh

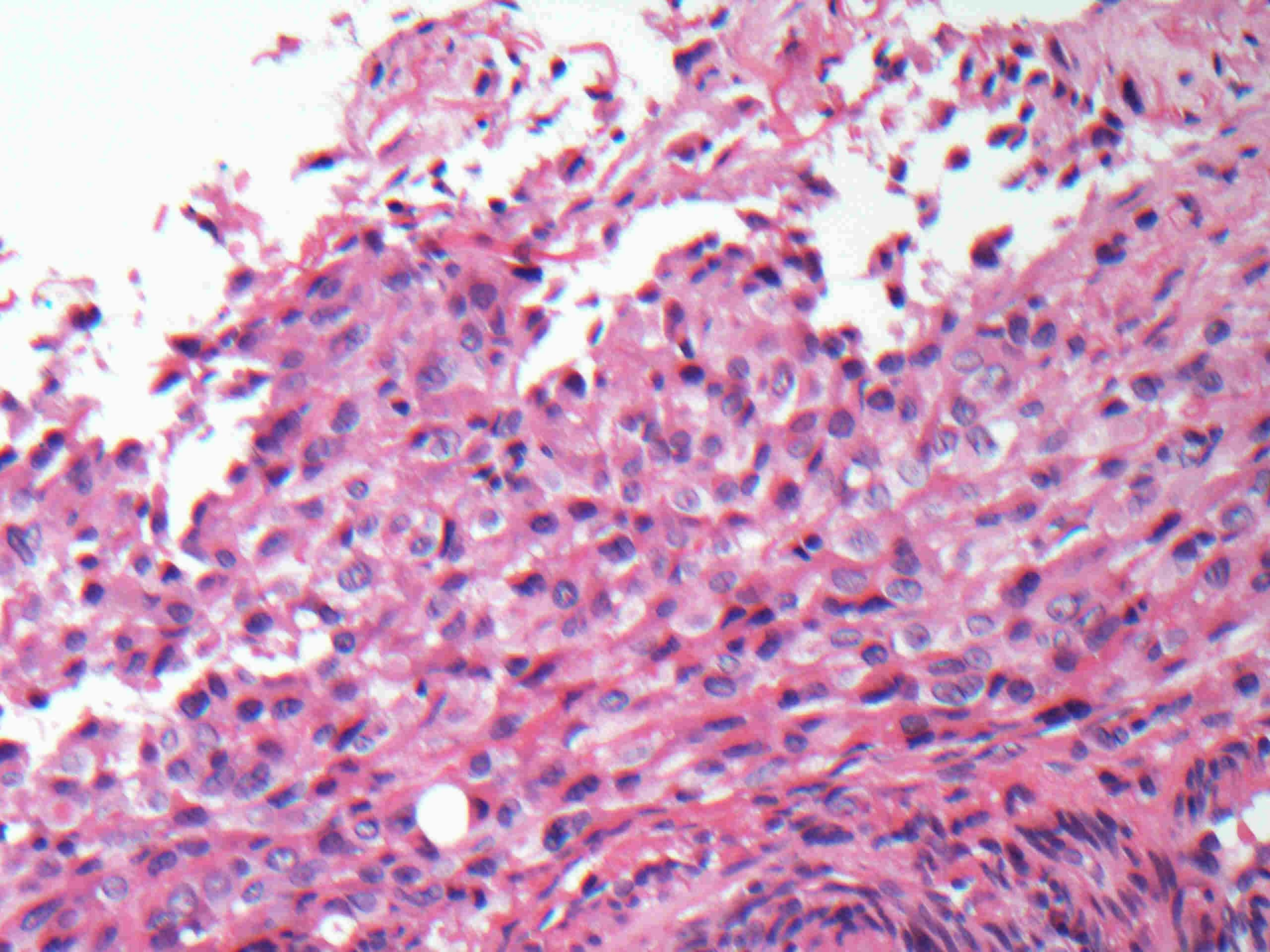
# Case E1

- Male 23
- Chronic wound on palm secondary to injury 10 years previously.
- Dx – chronic scar









# Immunohistochemistry

Positive:

- Cytokeratin AE1/3
- Vimentin
- CD34
- EMA

Diagnosis: EPITHELIOID SARCOMA

# Circulation diagnoses

- Total of 95 responses

Epithelioid sarcoma 66 responses

(vs. deep GA/granulomatous/exclude mycobacterial)

Others:

Inflammatory/granulomatous/abscess/?fungi

Giant cell tumour of soft parts

PVNS/giant cell tumour tendon sheath



# Circulation diagnoses

Others:

Reticular histiocytoma

Squamous cell carcinoma

Fibrous histiocytoma

Necrobiosis lipoidica

Histiocytoid proliferation/histiocytic sarcoma

Angiolymphoid hyperplasia

Malignant soft tissue tumour

Angiosarcoma

Foreign body reaction

# Follow up

December 2015 – diagnostic biopsy

February 2016 – above elbow amputation  
(multiple deposits) & axillary node clearance  
(4 of 14 nodes +ve)

August 2016 – clinical recurrence in upper arm,  
biopsy proven

October 2016 – amputation through shoulder  
joint; solitary subcutaneous deposit

# Prognosis?

5 year survival 70%

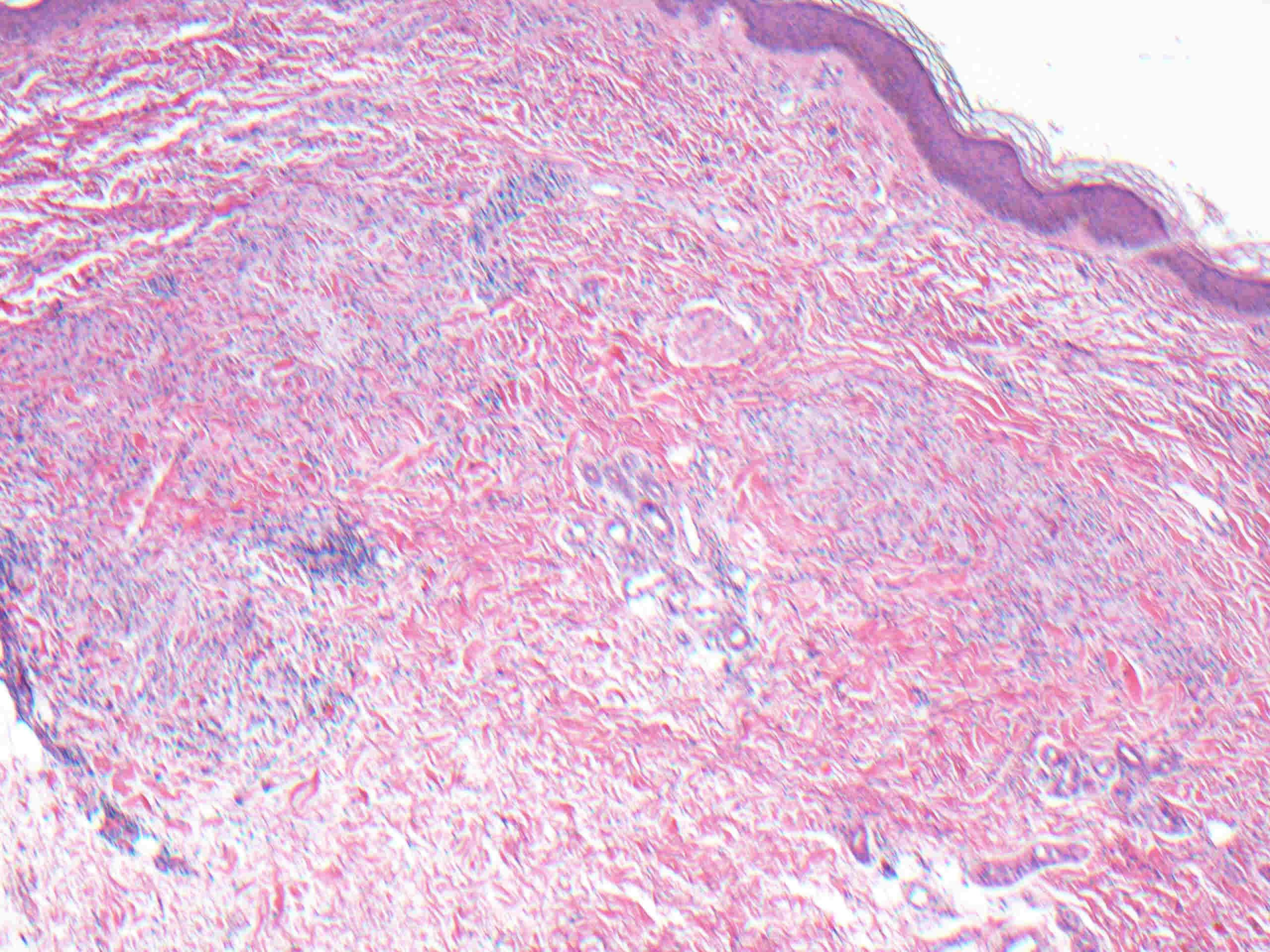
20 year survival 20-25%

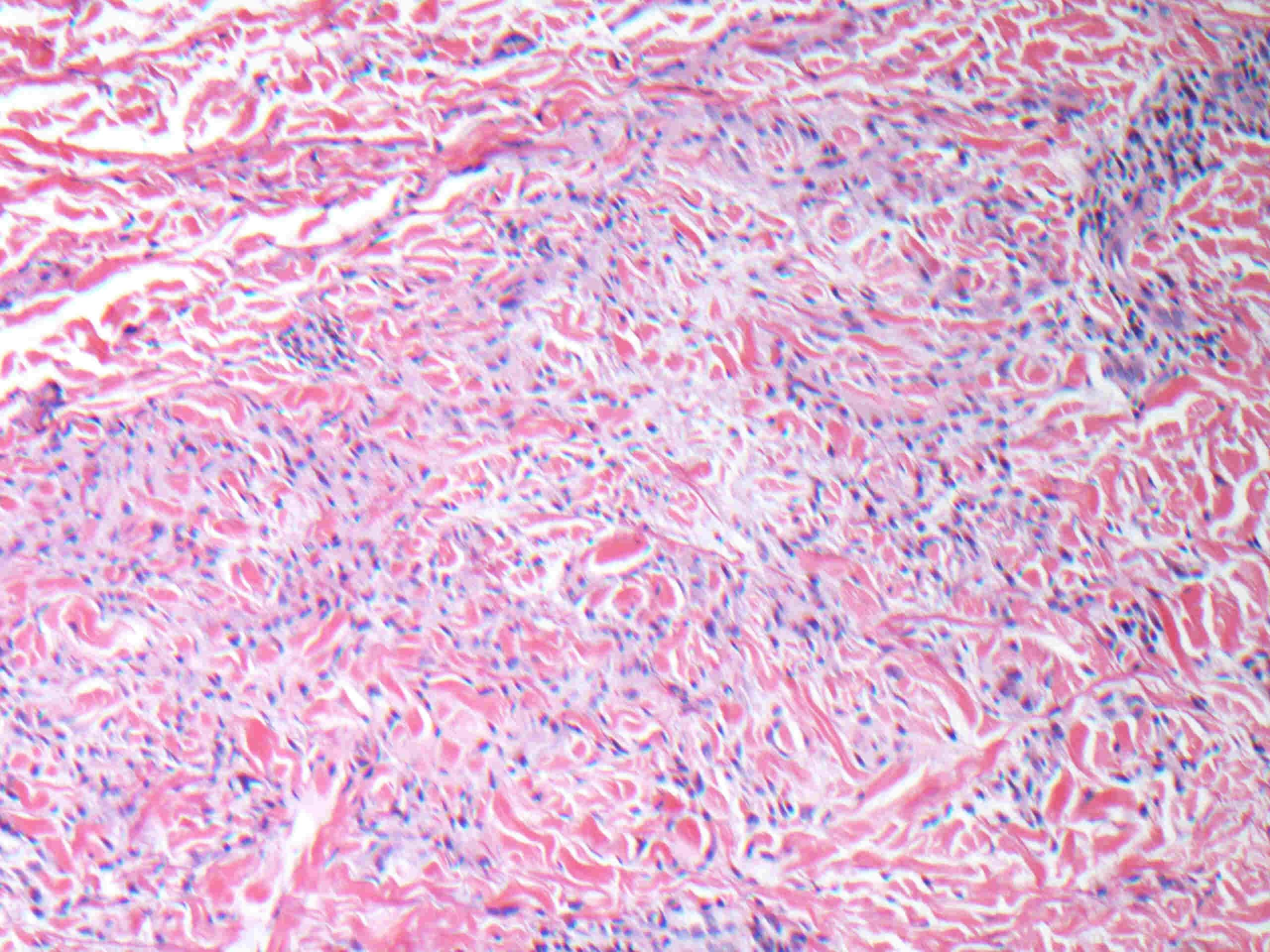
# Case E2

- Female 35
- One year history arcuate pink plaque on dorsal hand.

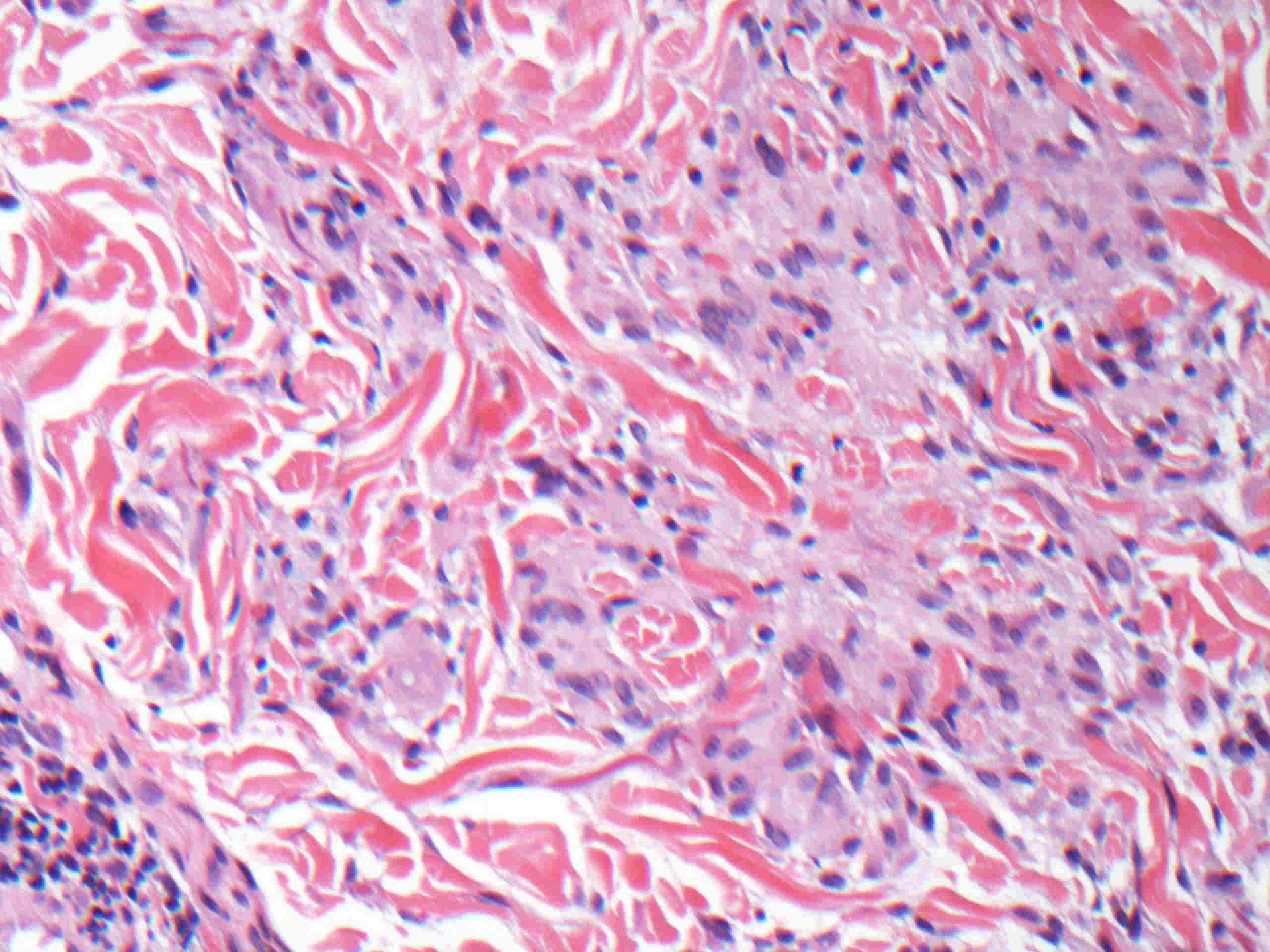


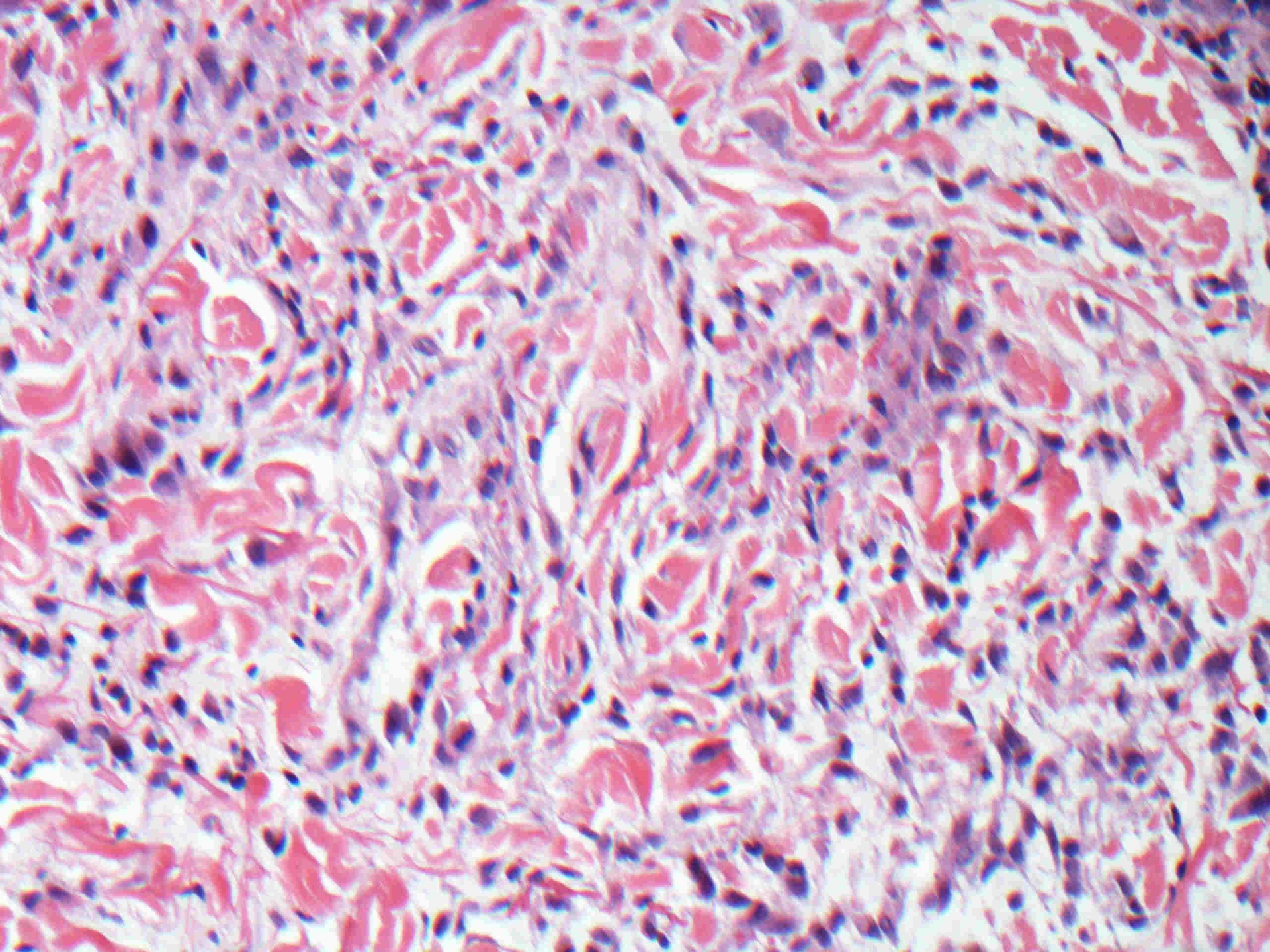


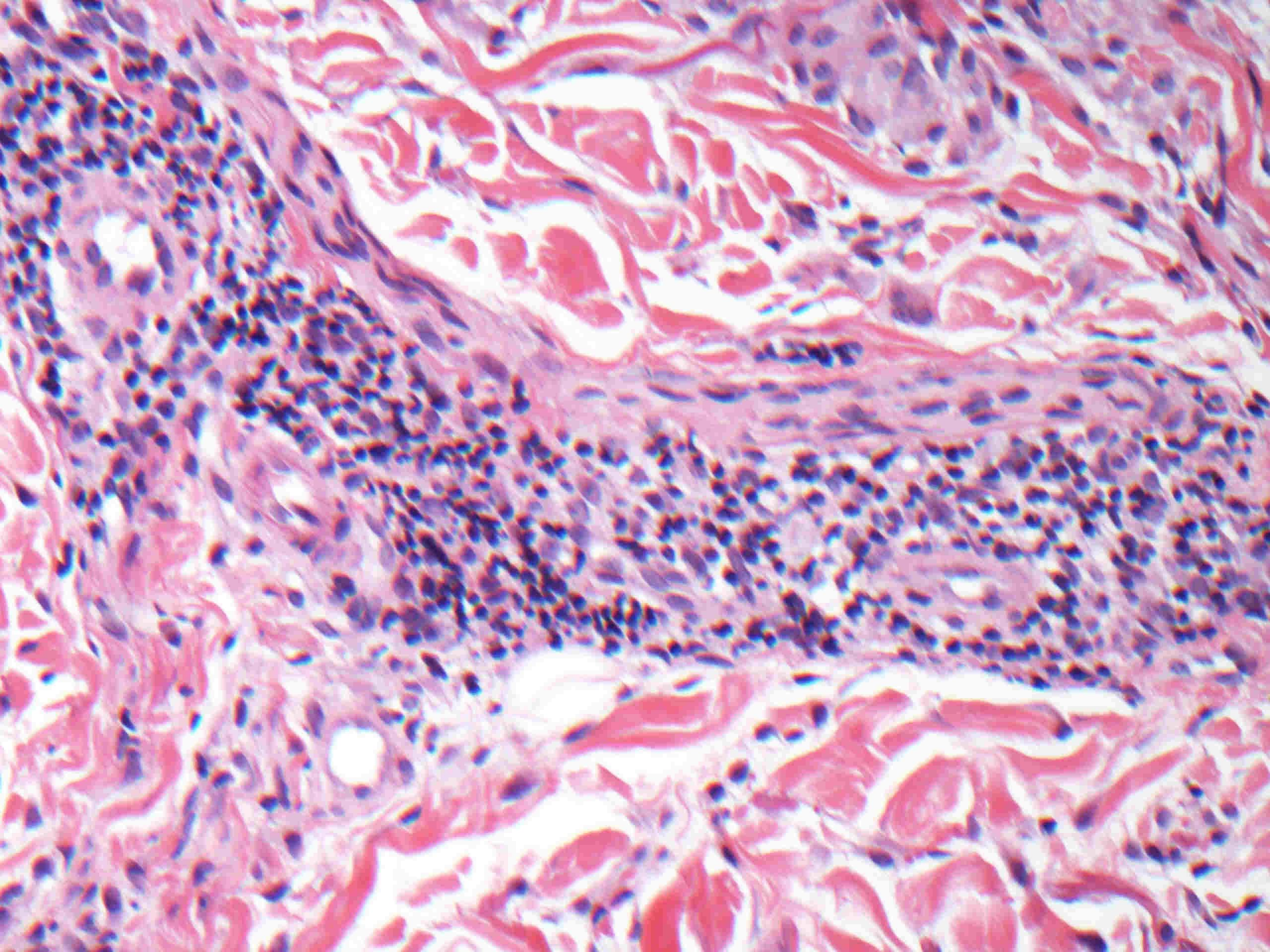












# Circulation diagnoses

- 95 responses

Granuloma annulare – 94

(vs. epithelioid sarcoma 2)

Dermatofibroma - 1

# Differential diagnoses

Necrobiosis lipoidica

Rheumatoid nodule

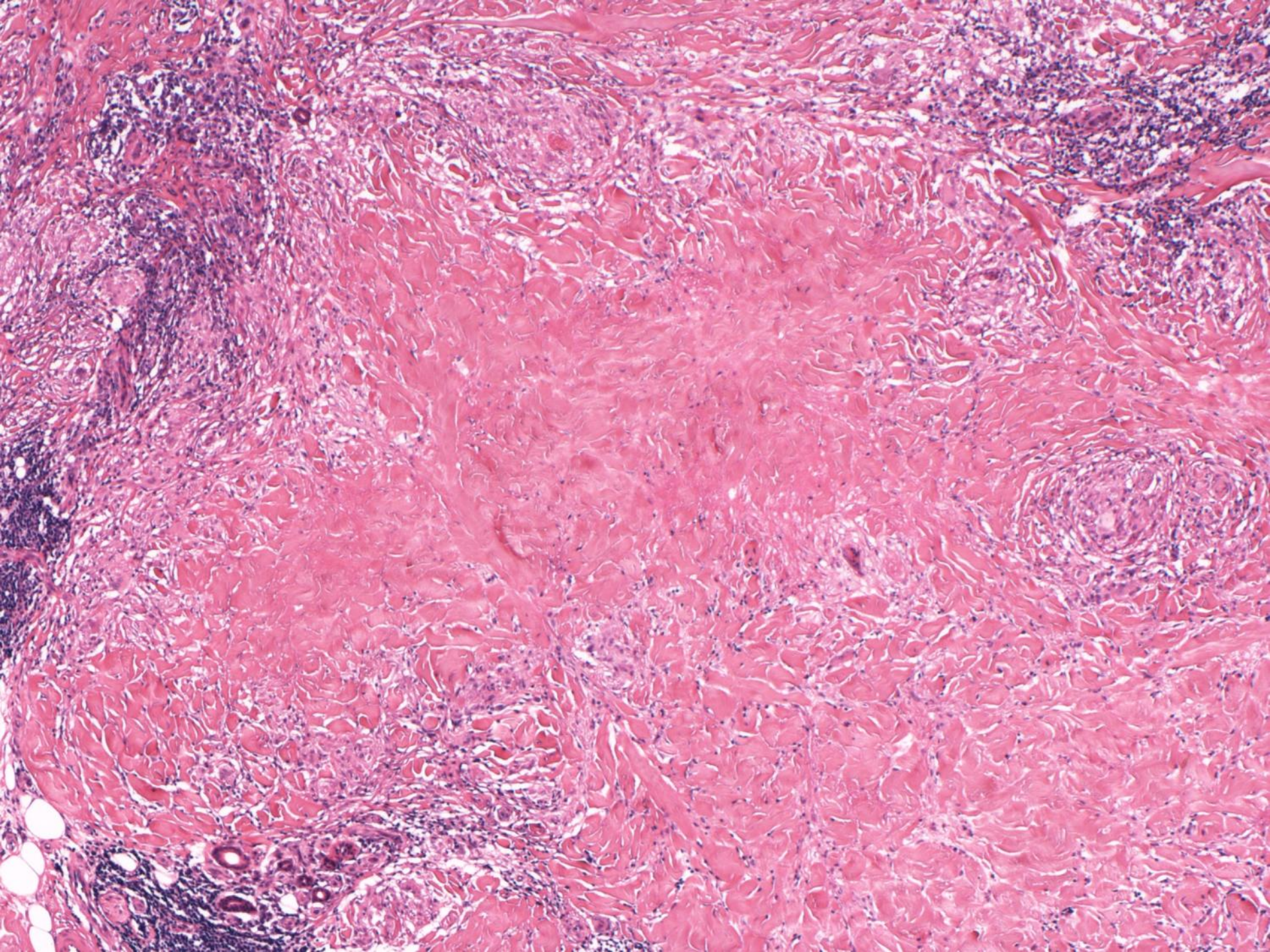
Actinic granuloma

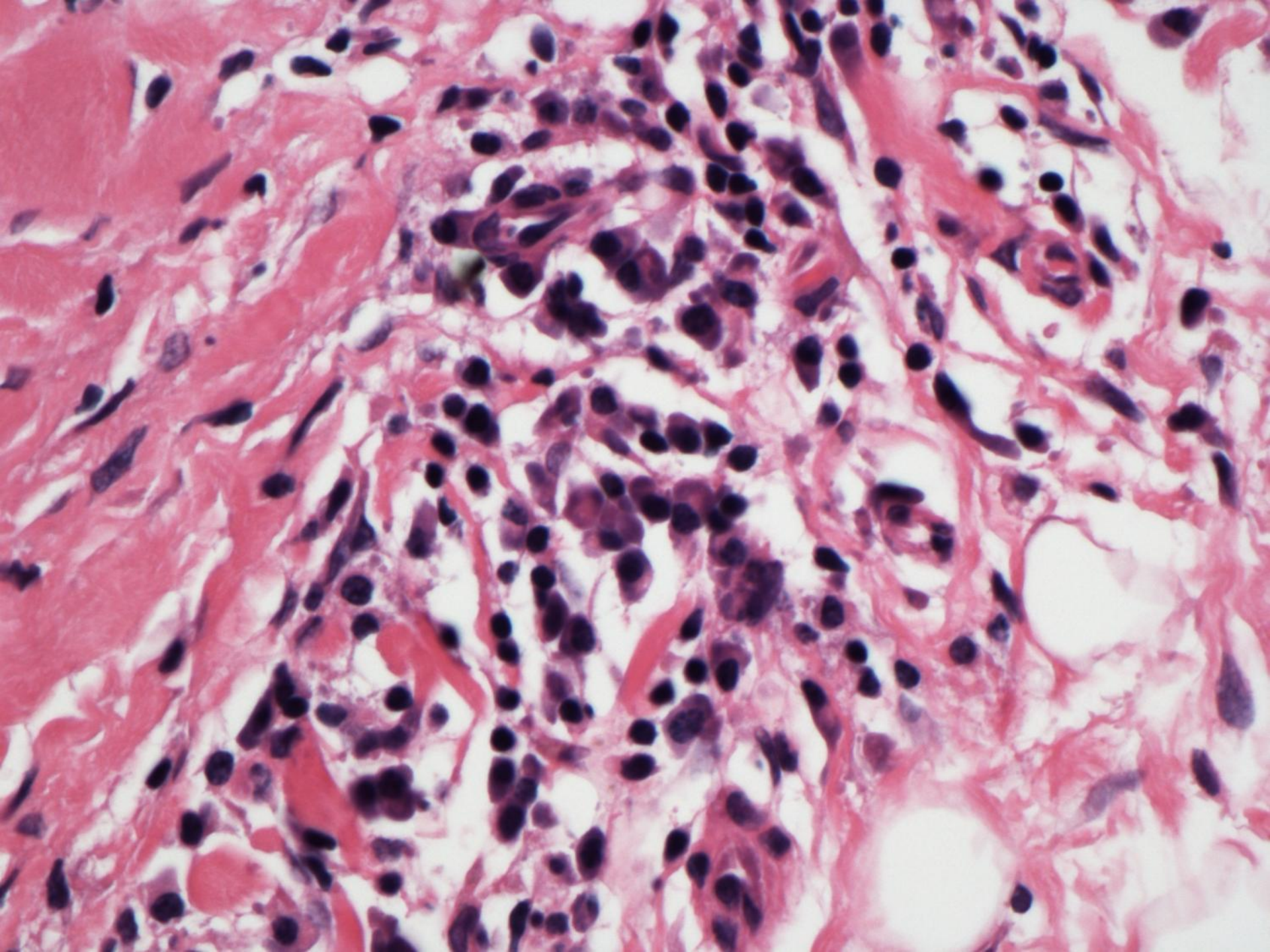
Other granulomatous – infections

Granuloma annulare-like drug eruptions

Epithelioid sarcoma

Mycosis fungoides

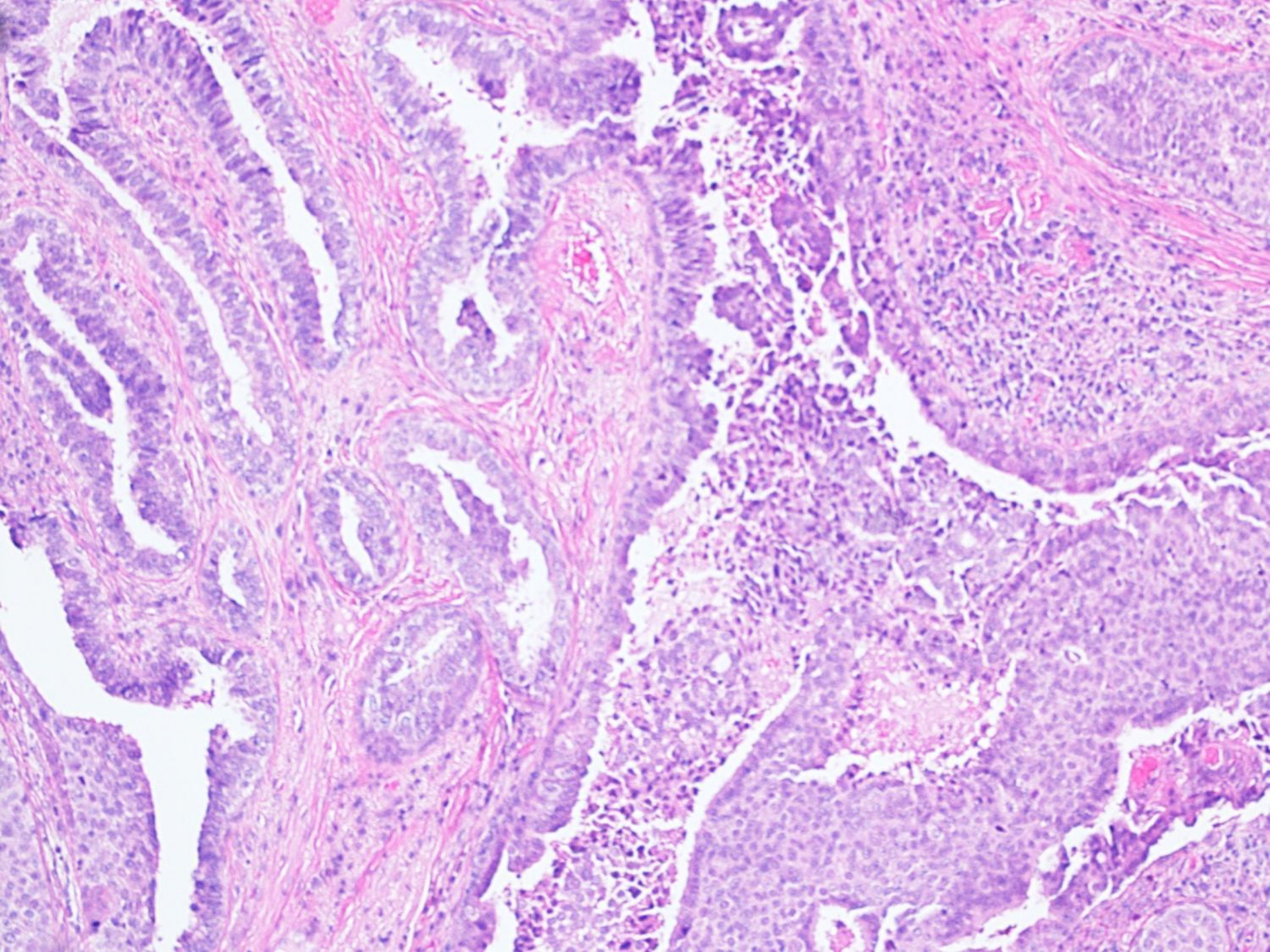


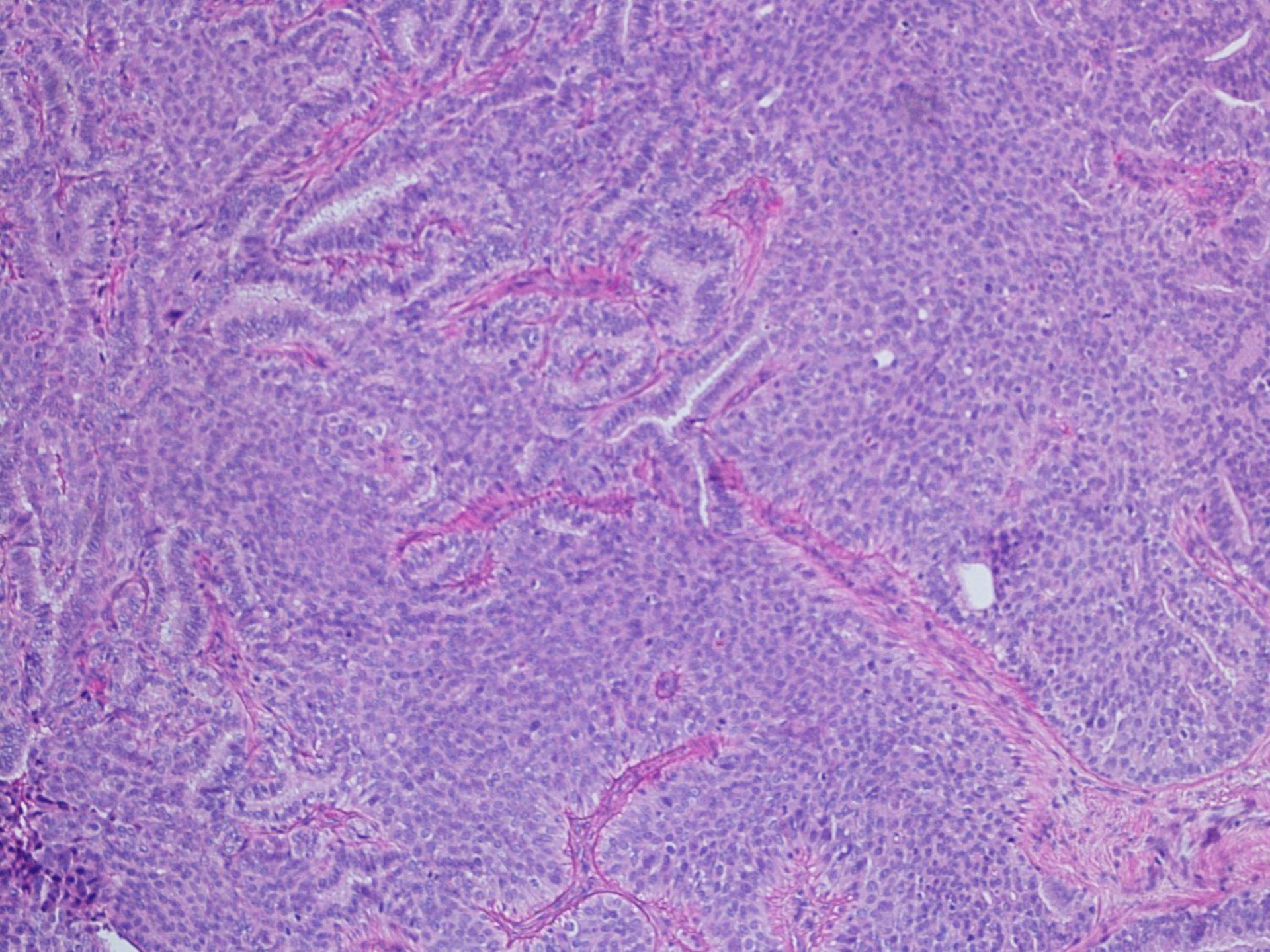


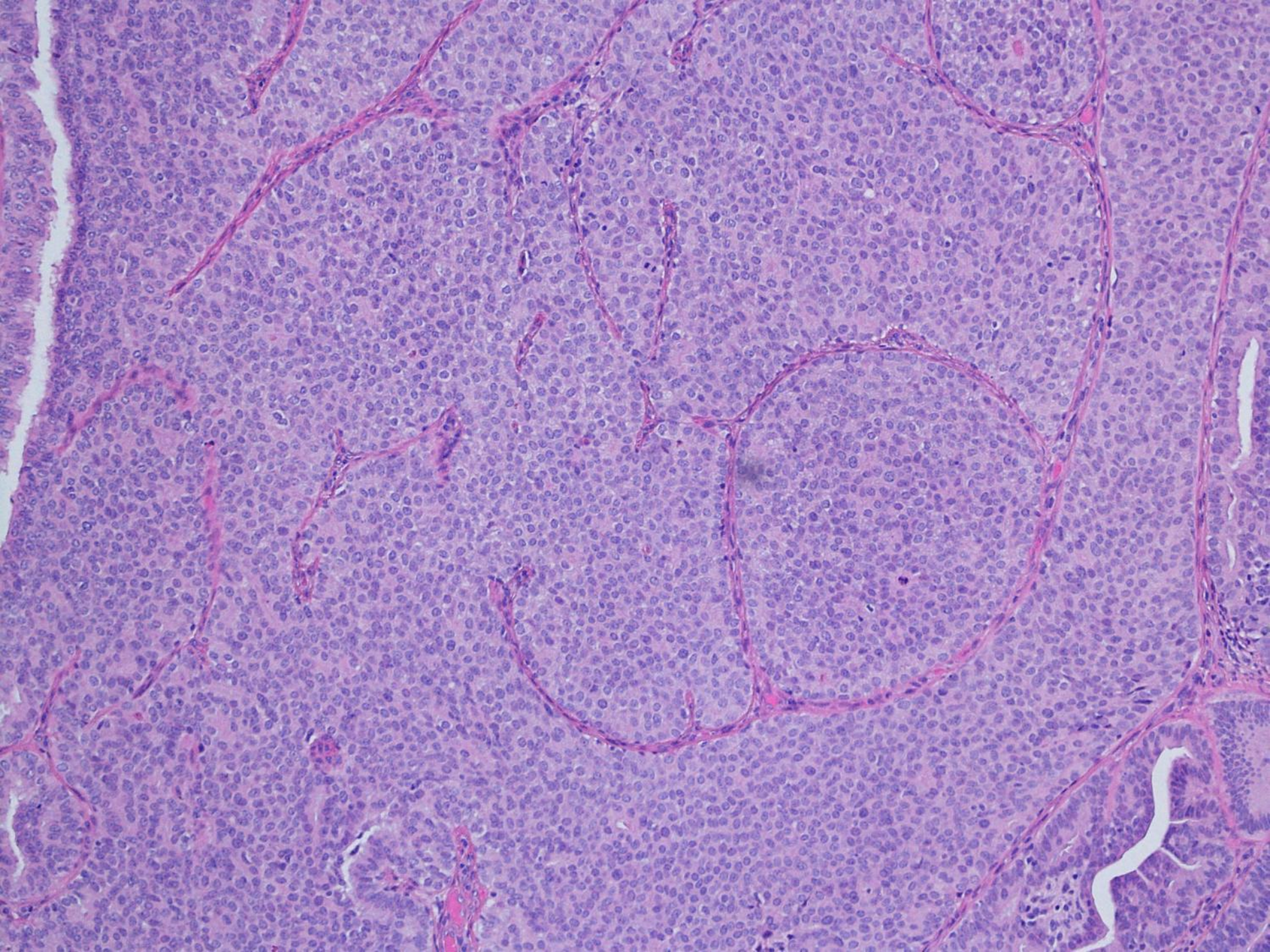
# Case E3

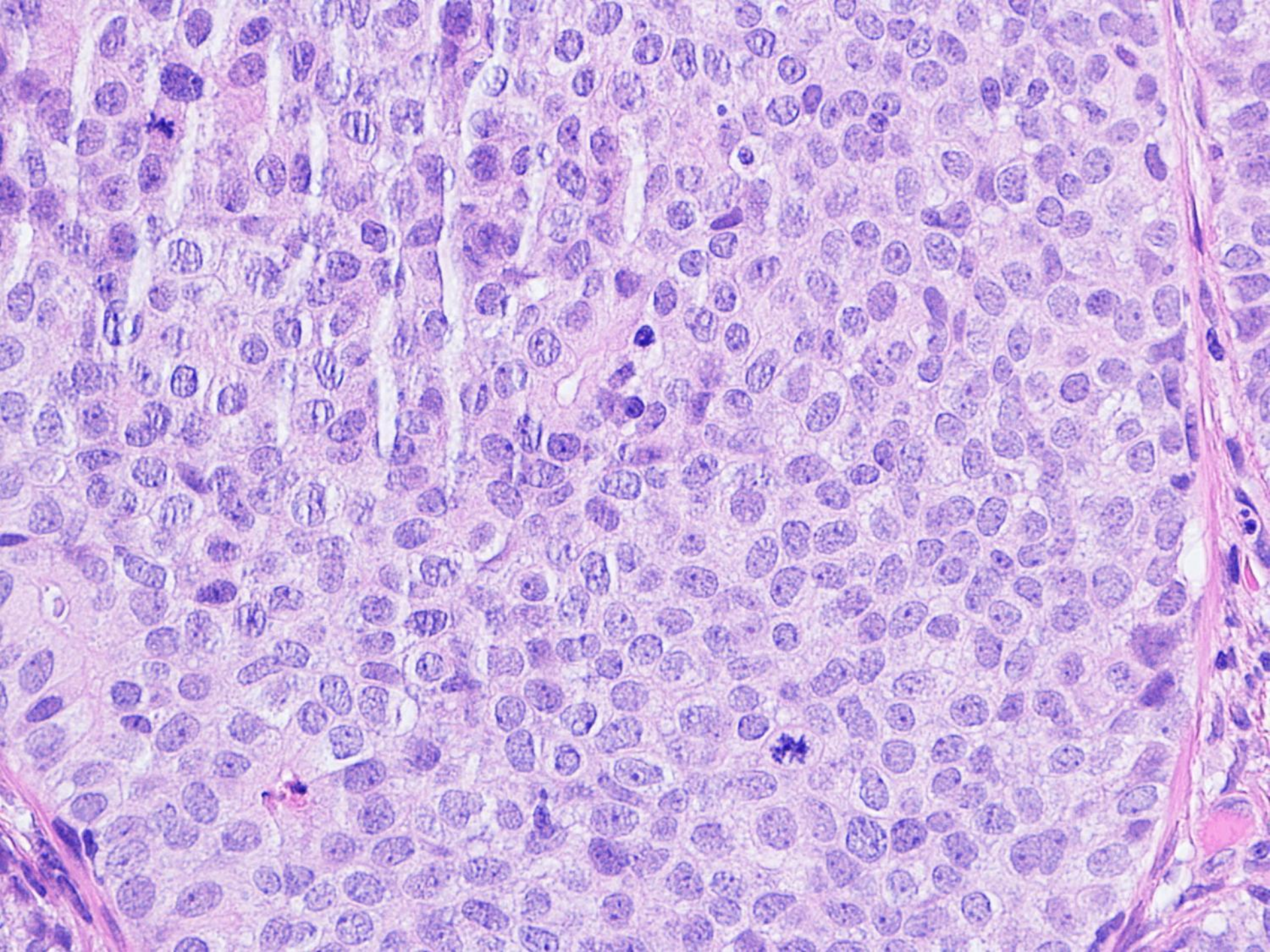
- 80 yr old
- Female
- Nodule in vulva
- ?carcinoma

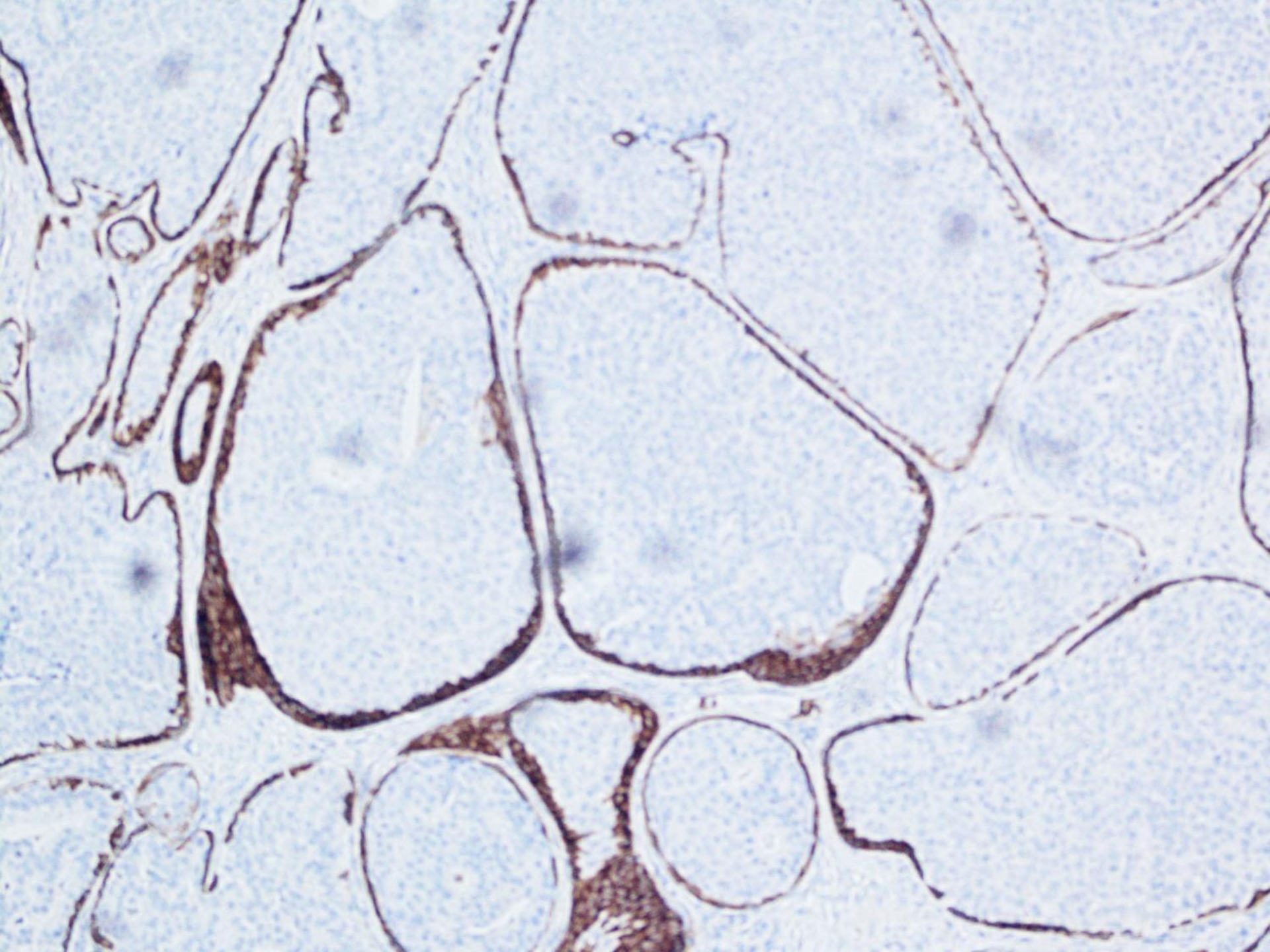












# Case E3

DCIS within hidradenoma papilliferum (49)

Hidradenoma papilliferum (11)

Invasive adenocarcinoma (10)

Hidradenoma (5)

Hidradenocarcinoma (3)

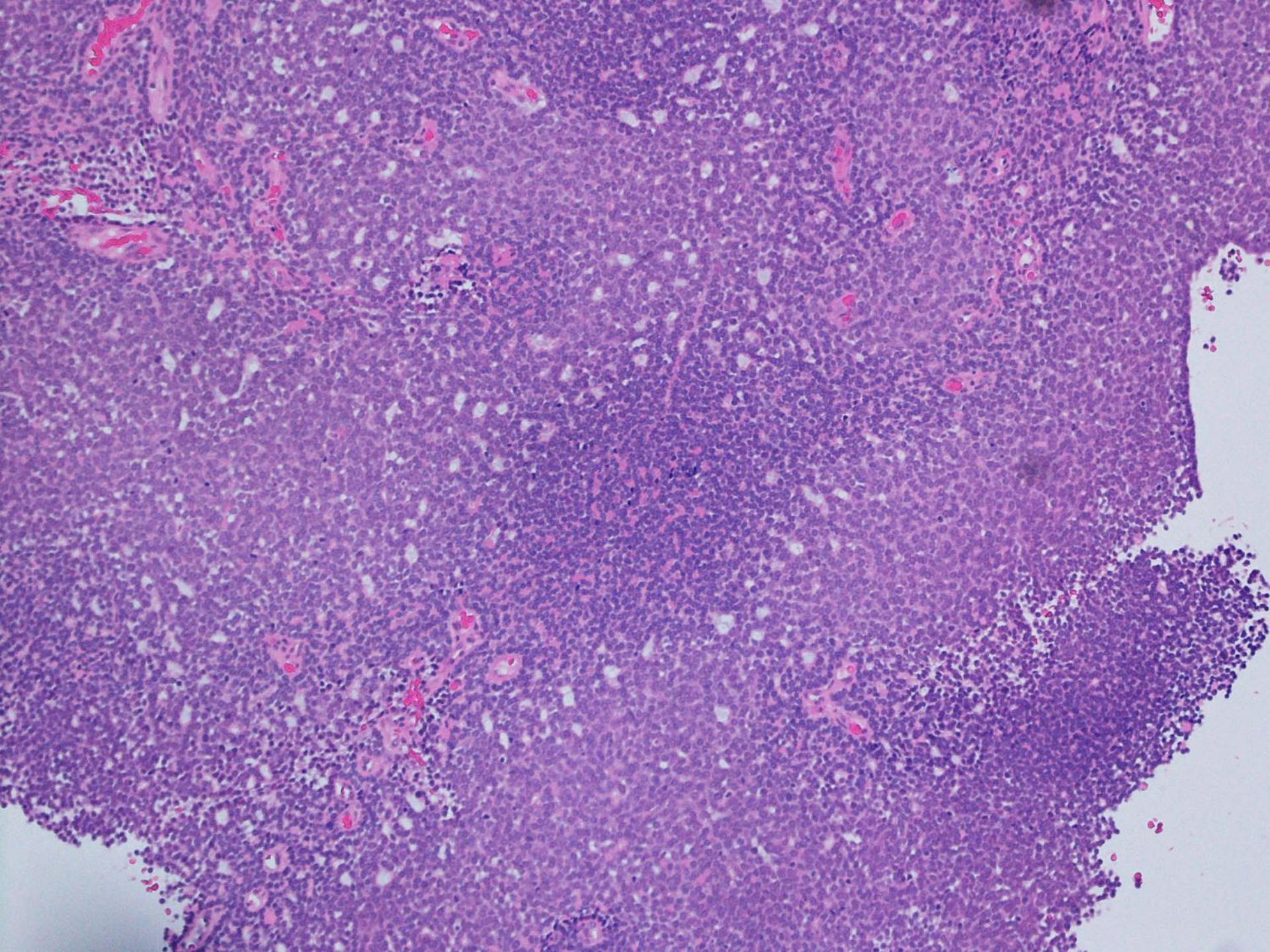
Mixed tumour (2)

Syringocystadenoma papilliferum (1)

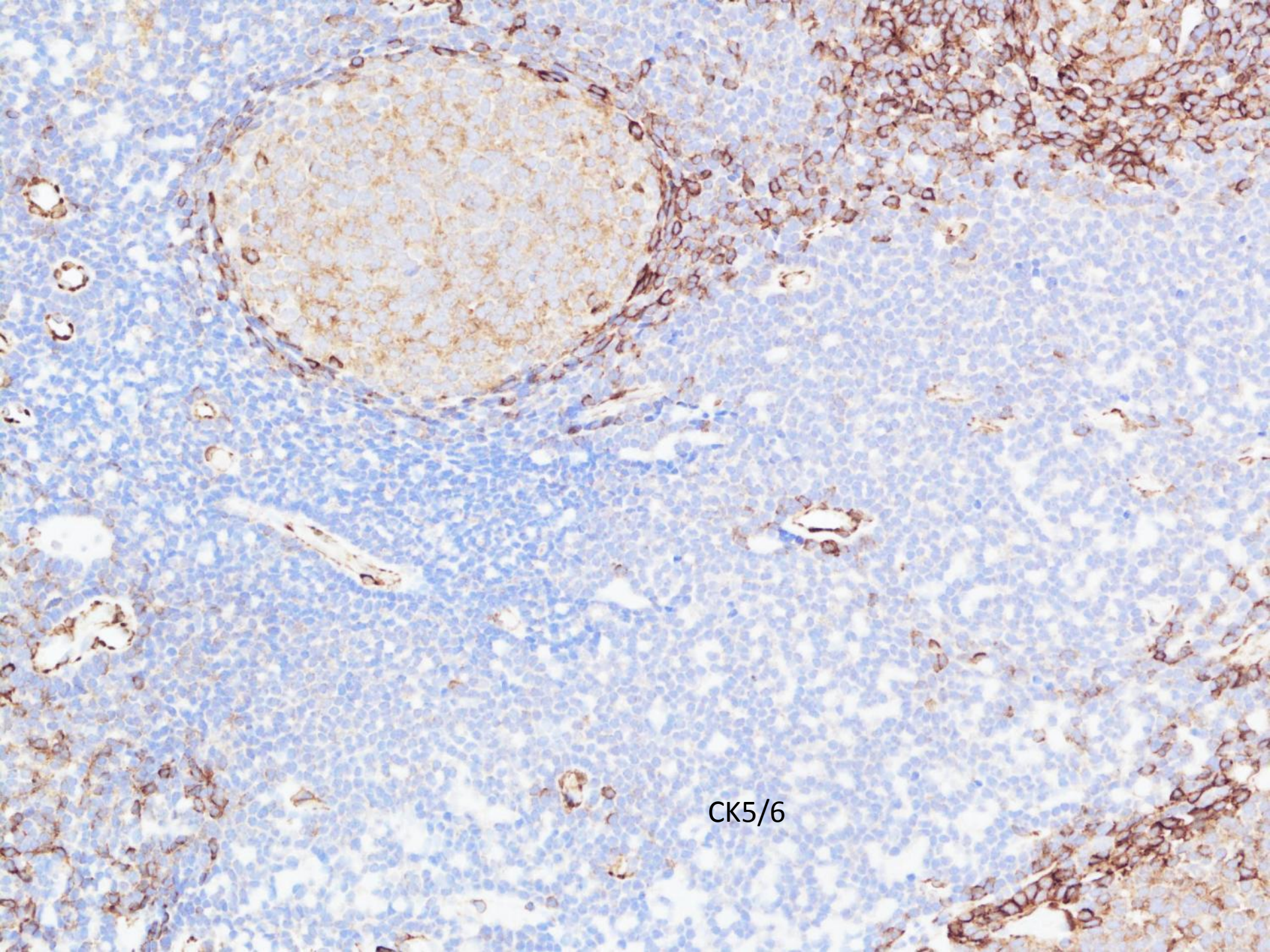
Neuroendocrine tumour (1)

# Case E4

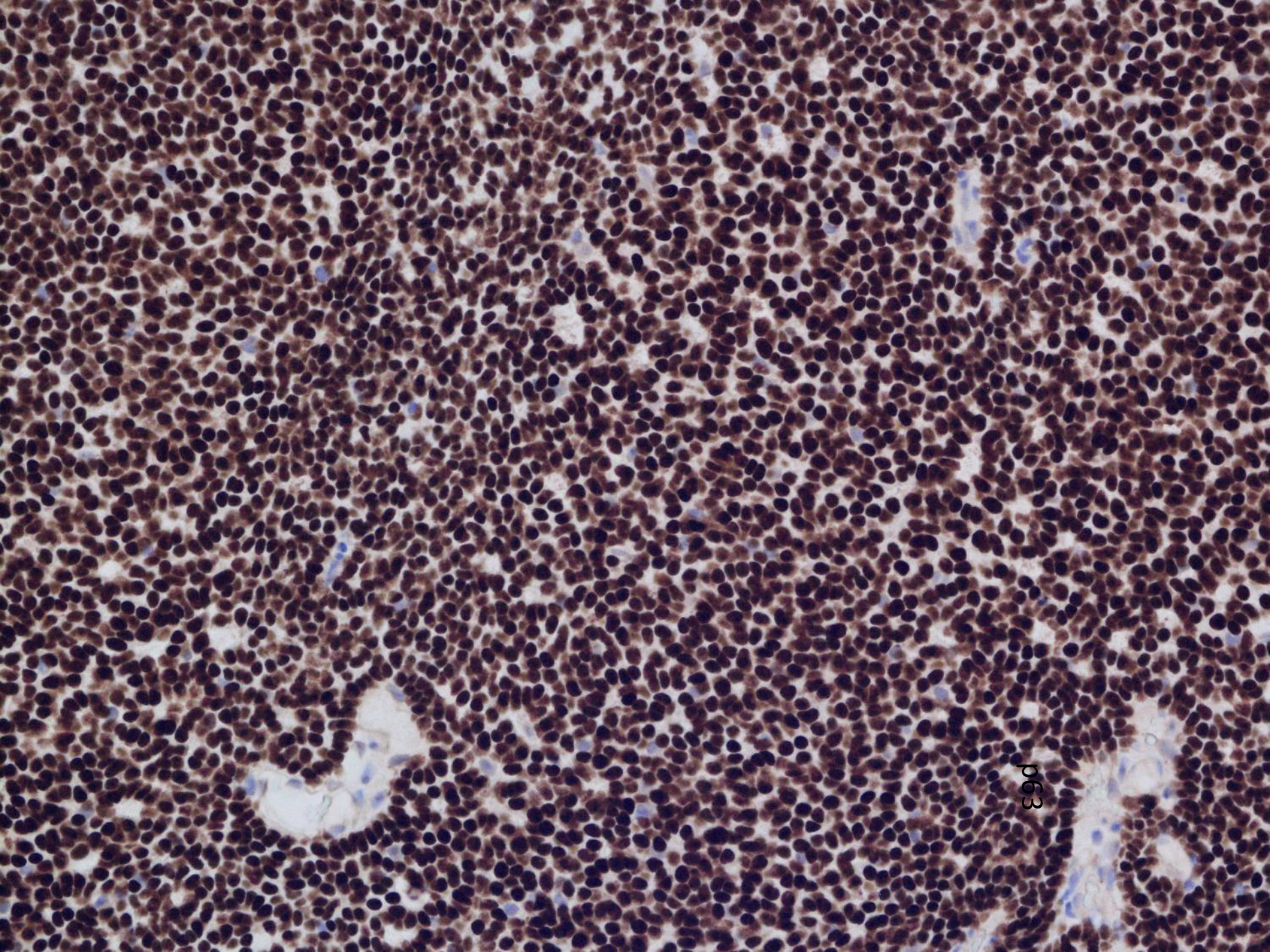
- 90 yr old
- Female
- Nodule in face
- Recurrent x2



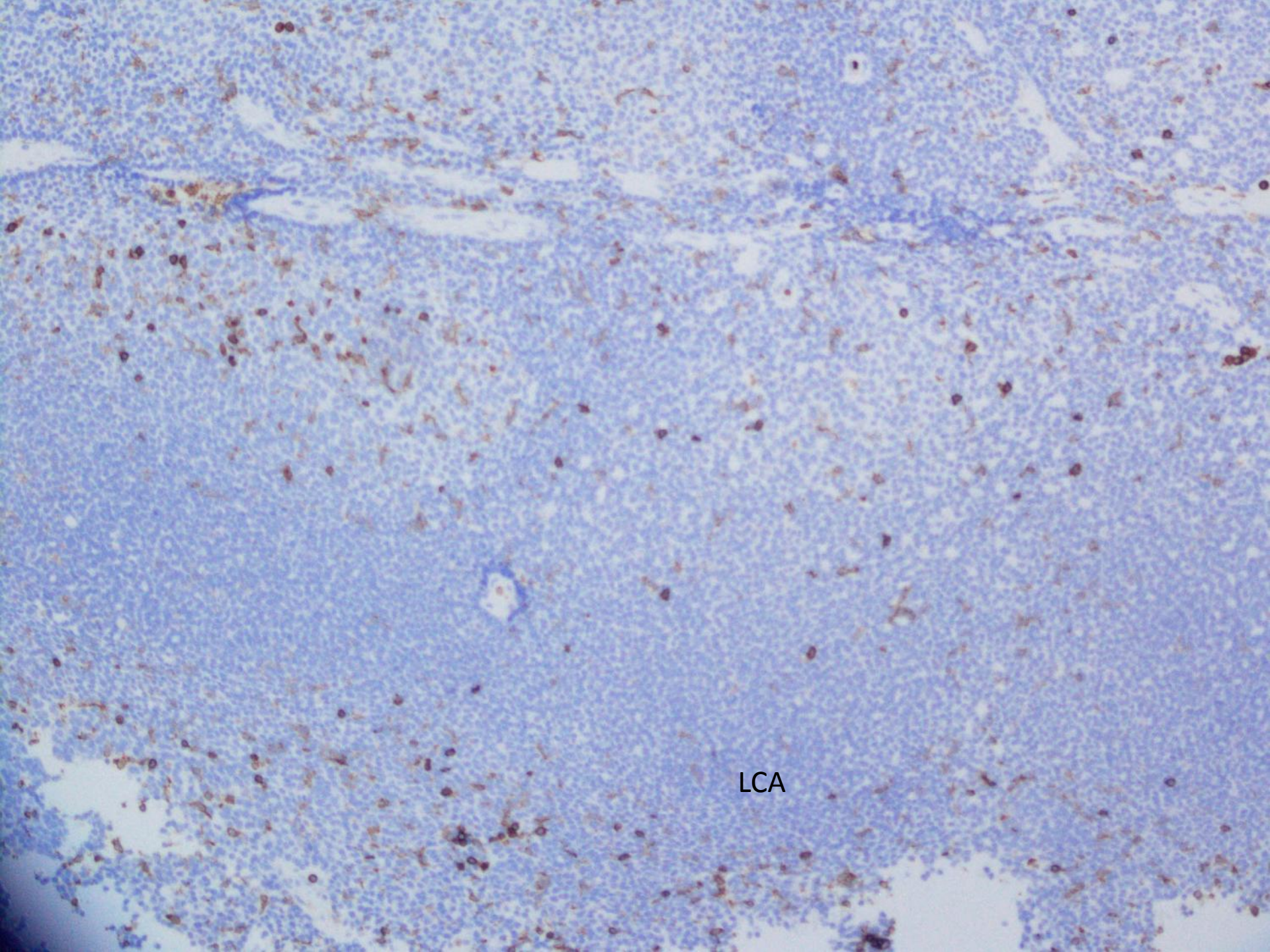




CK5/6



p63



LCA

# Case E4

Merkel Cell Carcinoma (50)

Spiradenoma (19)

Spiradenocarcinoma (6)

Cylindroma (5)

Adenoid cystic carcinoma (3)

BCC (3)

Trichoblastoma (2)

Pilomatrixoma (1)

Dabska Tumour (1)

Ewings sarcoma (1)

- Original biopsy reported as spiradenoma
- Current biopsy – still spiradenoma like but less obvious bilayer, areas of overgrowth of epithelial and myoep cells, less lymphocytes
- In keeping with Salivary gland type basal cell adenocarcinoma low grade

# Carcinoma ex Spiradenoma

- Salivary gland type basal cell adenocarcinoma low grade
- Salivary gland type basal cell adenocarcinoma high grade
- Invasive adenocarcinoma, nos
- Sarcomatoid adenocarcinoma