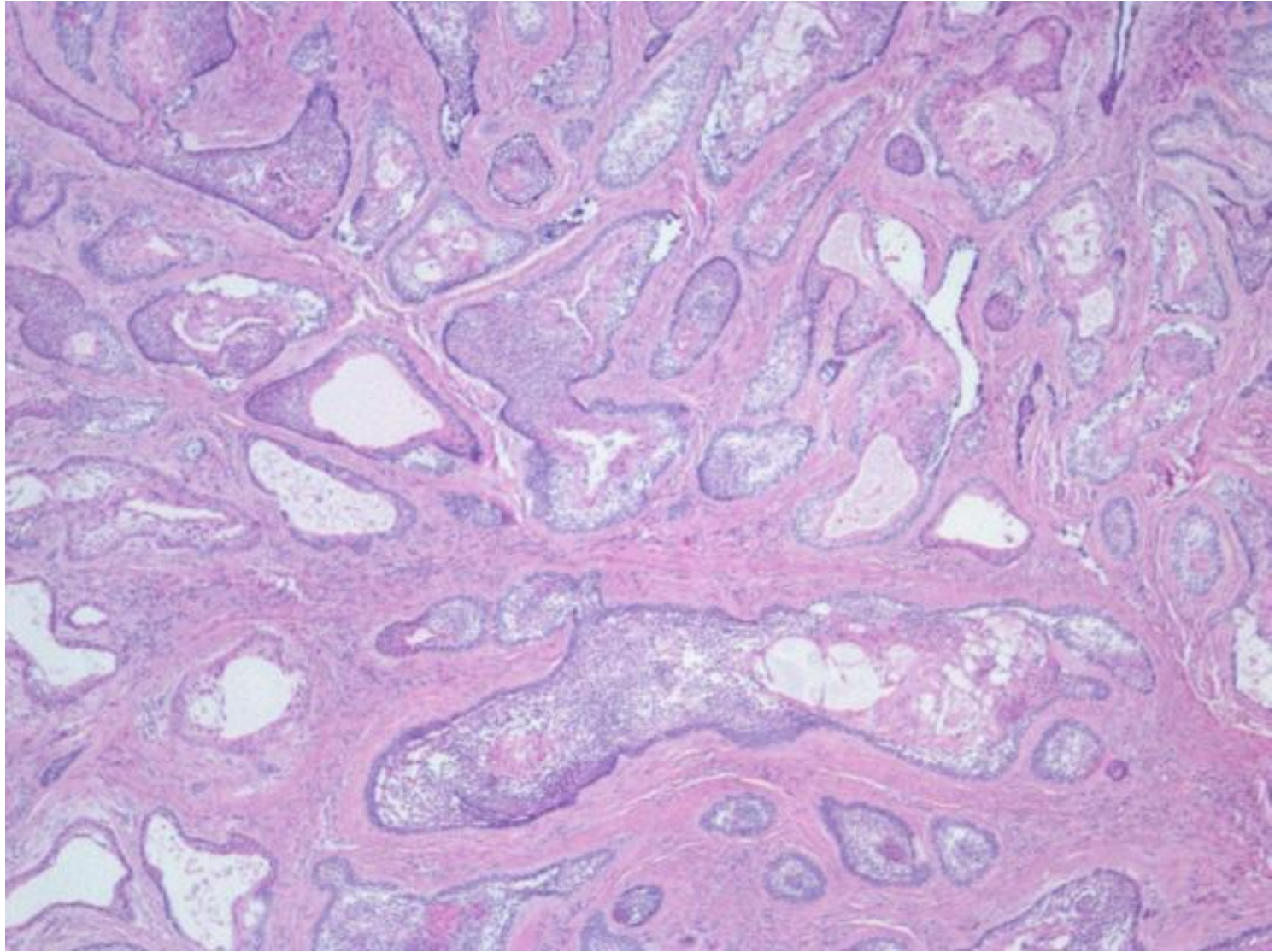


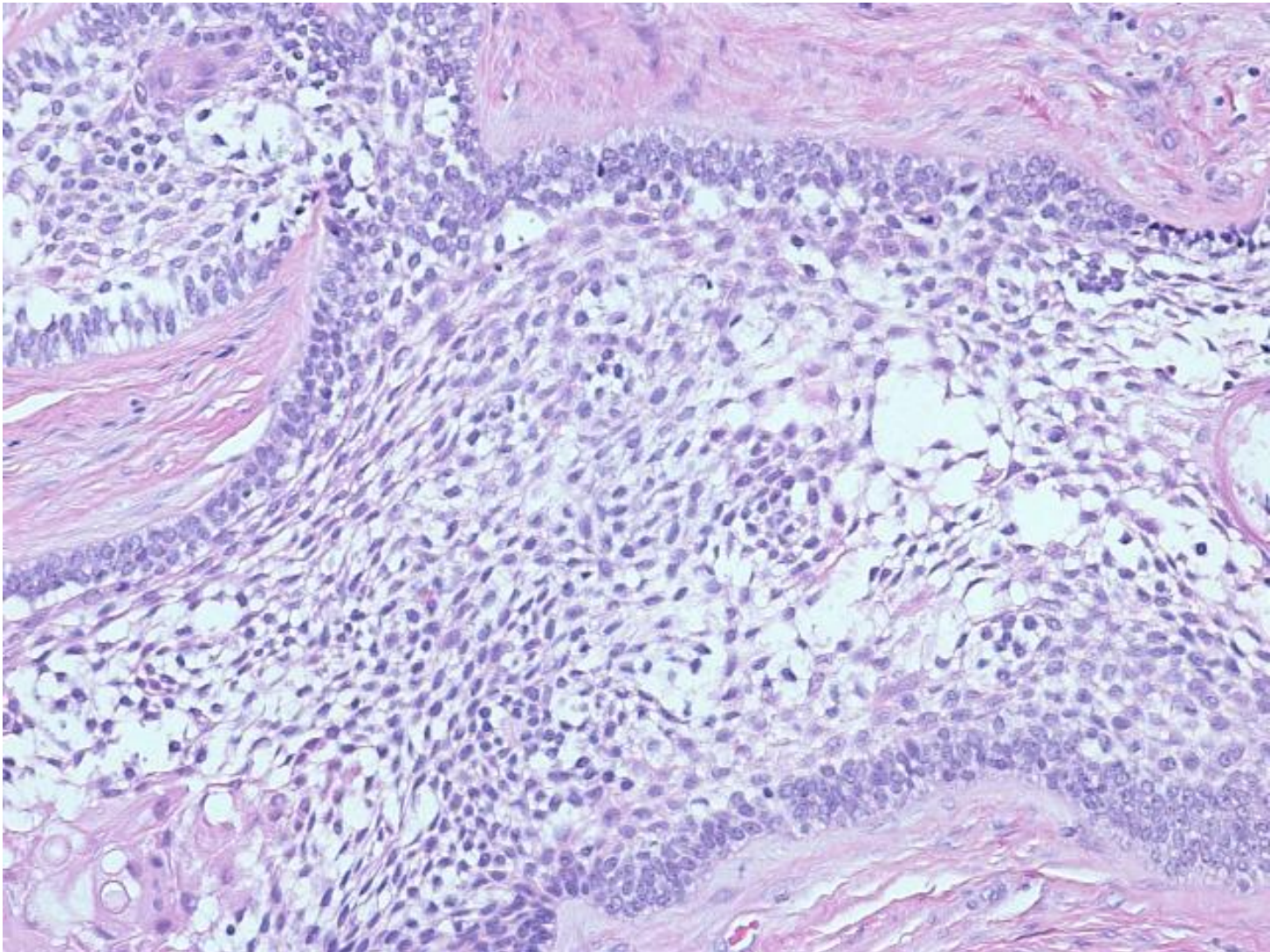
# EQA Circulation 44

Cases A to E

# CASE A

- Male -71- incisional biopsy of slow growing lesion involving the left side of mandible





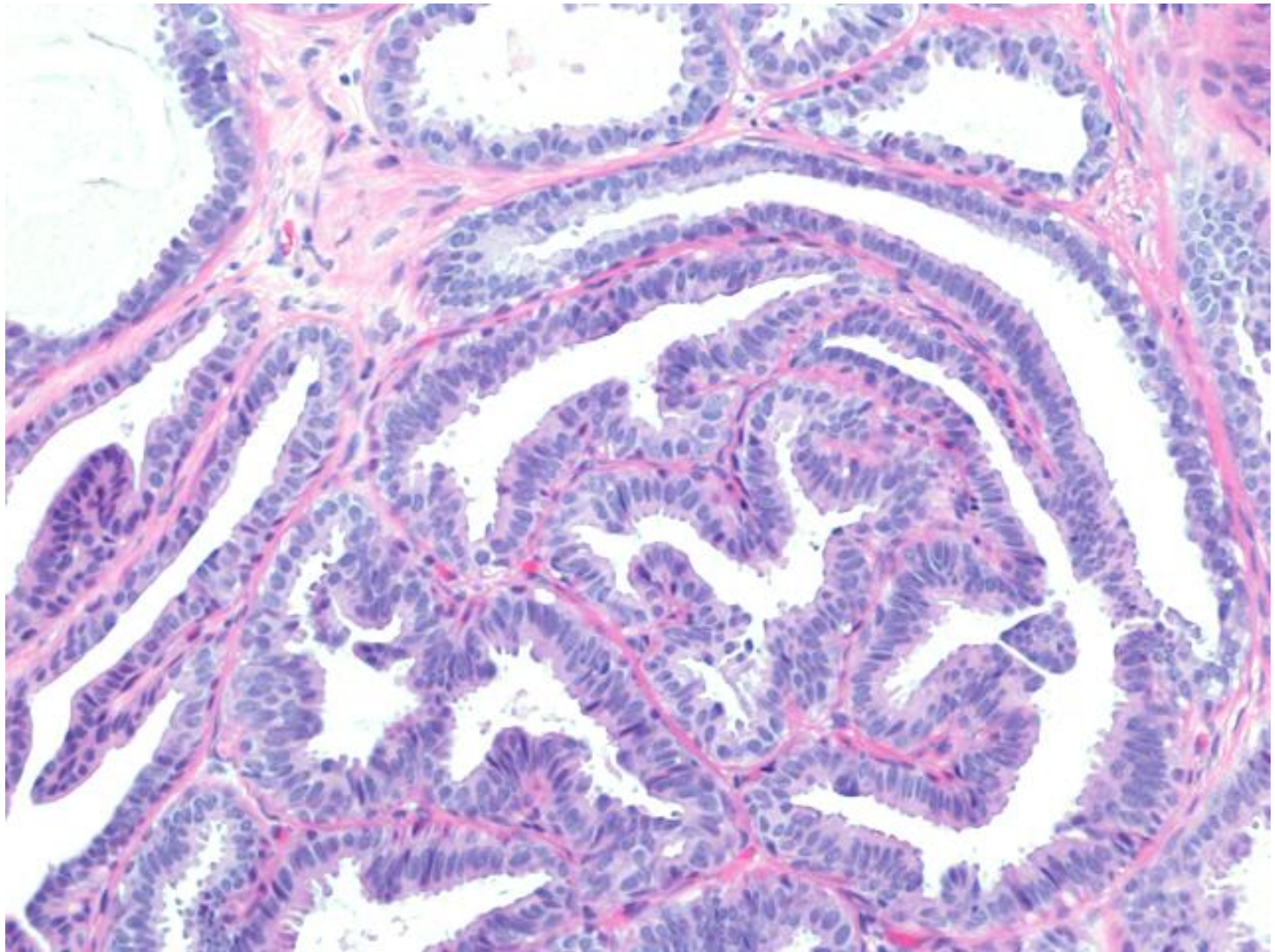
# AMELOBLASTOMA

- One answer of adamantinoma (2 points)
- Remainder all ameloblastoma (1 point)

# Case B

- Female-46-excision of vulval nodule





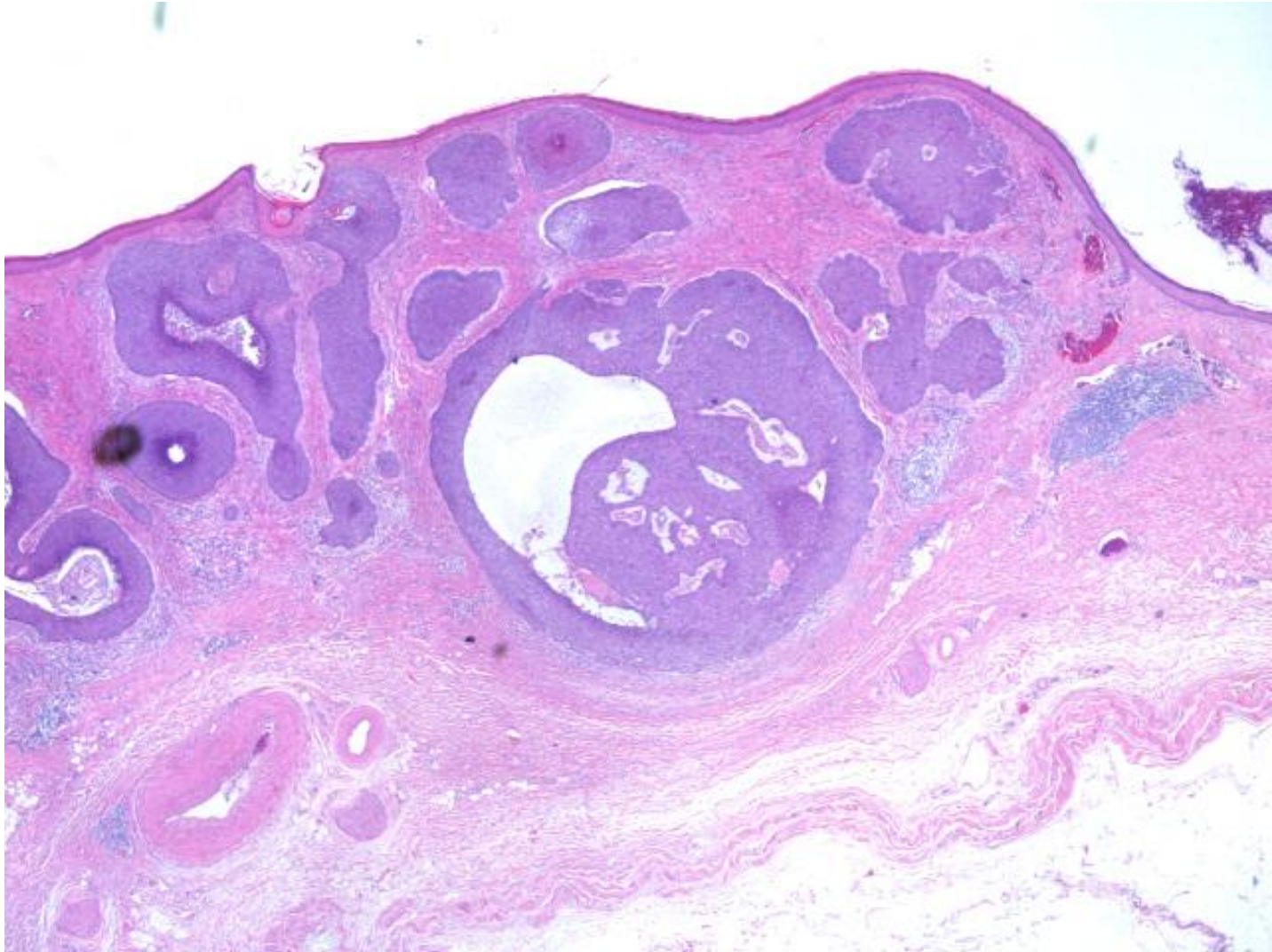


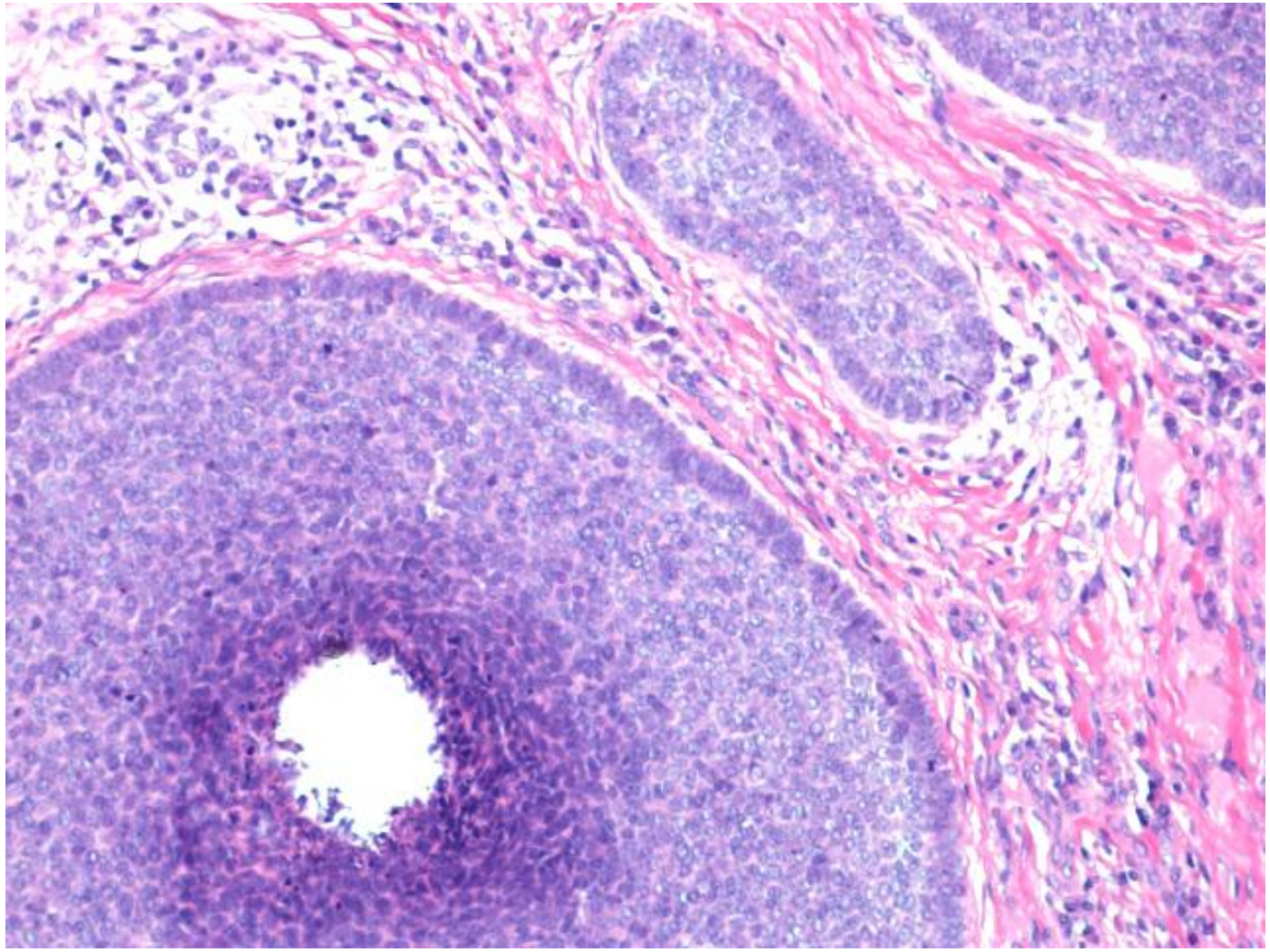
# Hidradenoma papilliferum

- One answer of cystadenoma papilliferum  
(1 point)
- One answer of hidrocystoma papilliferum  
(1 point)
- Remainder all hidradenoma papilliferum  
(1 point)

# Case C

- Female- 85- excision biopsy of lesion left temple



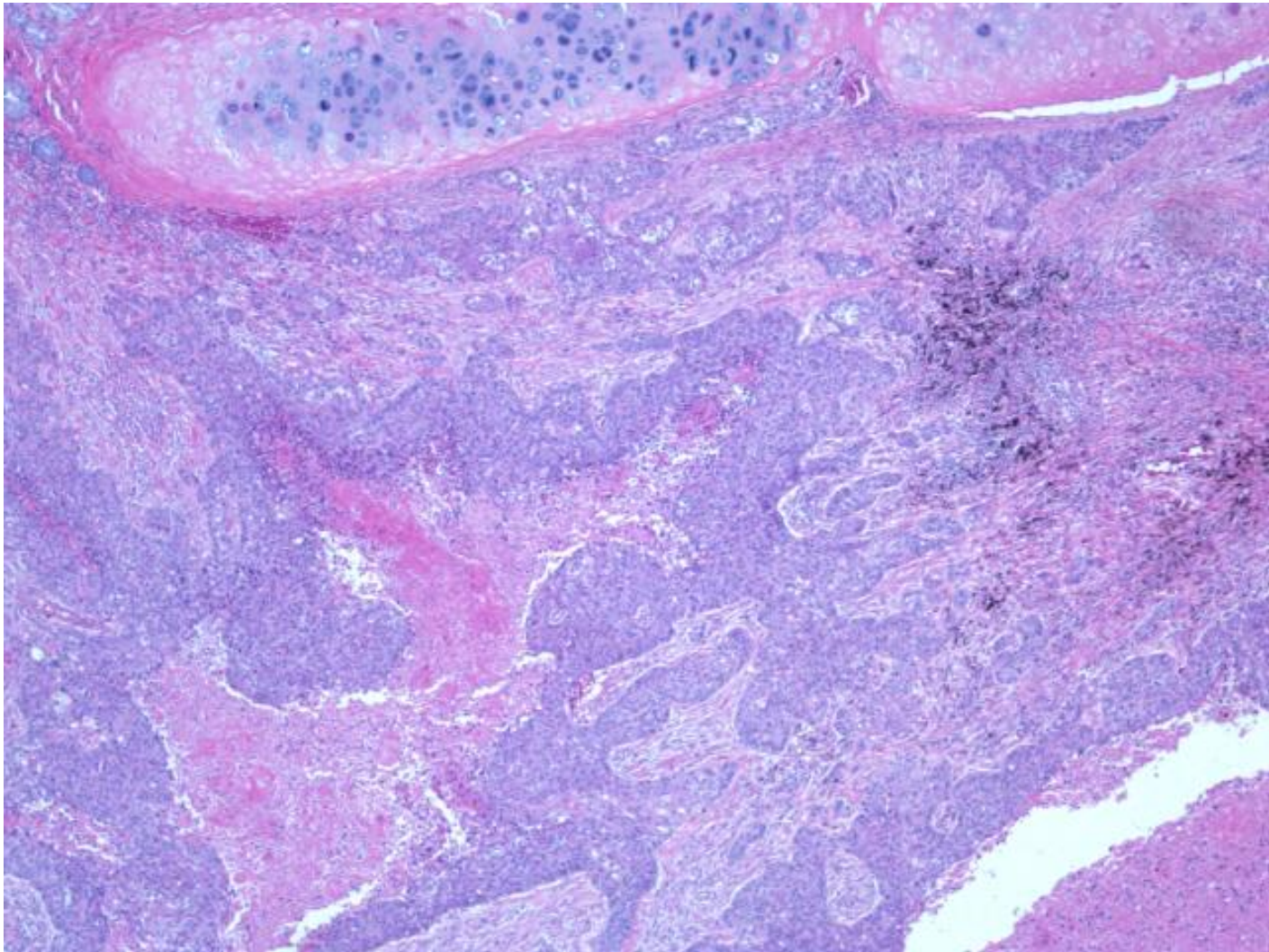


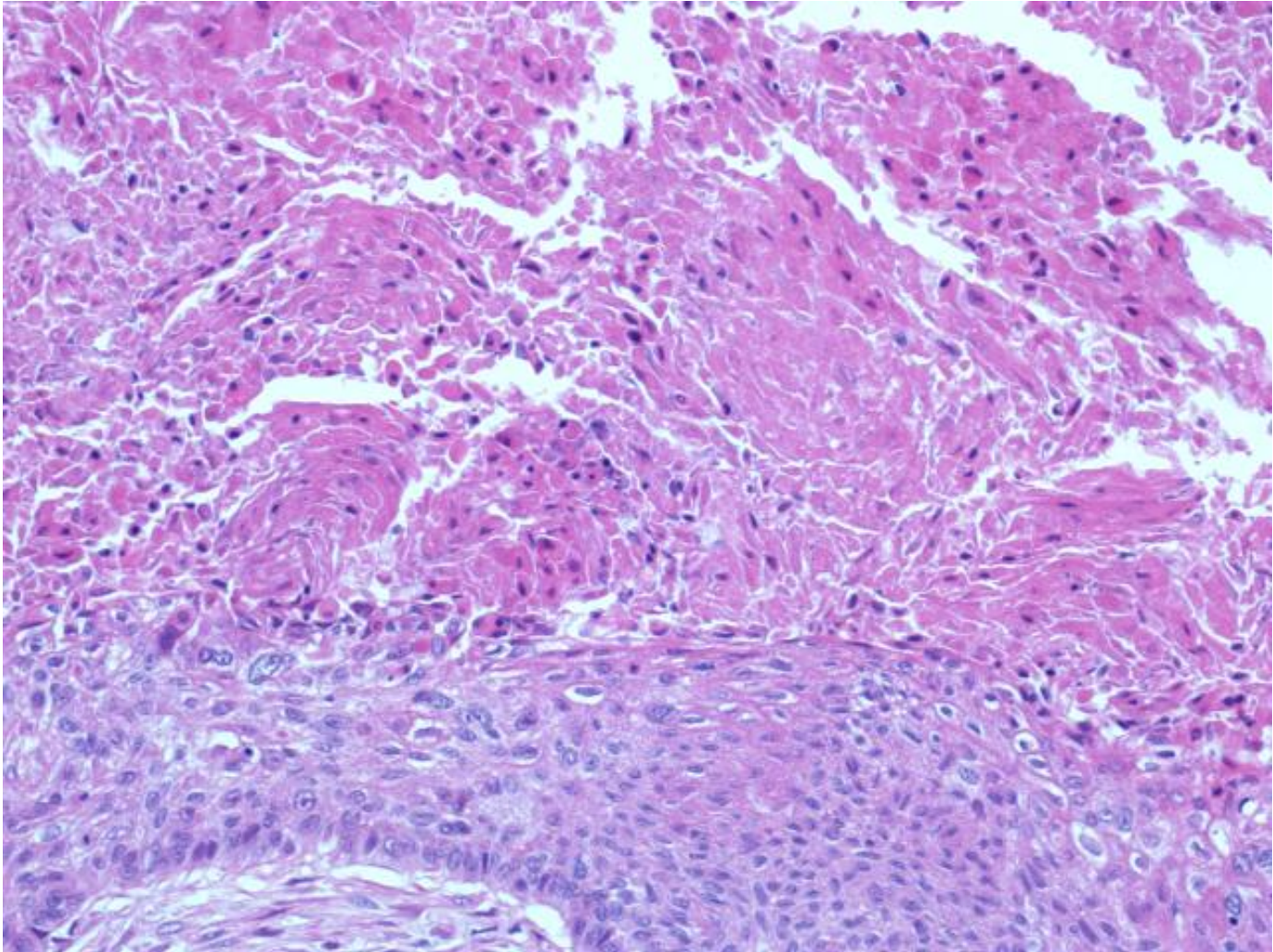
# Basal Cell Carcinoma

- All participants answered basal cell carcinoma (1 point)

# Case D

- Female- 78- resection of mass lower lobe of left lung





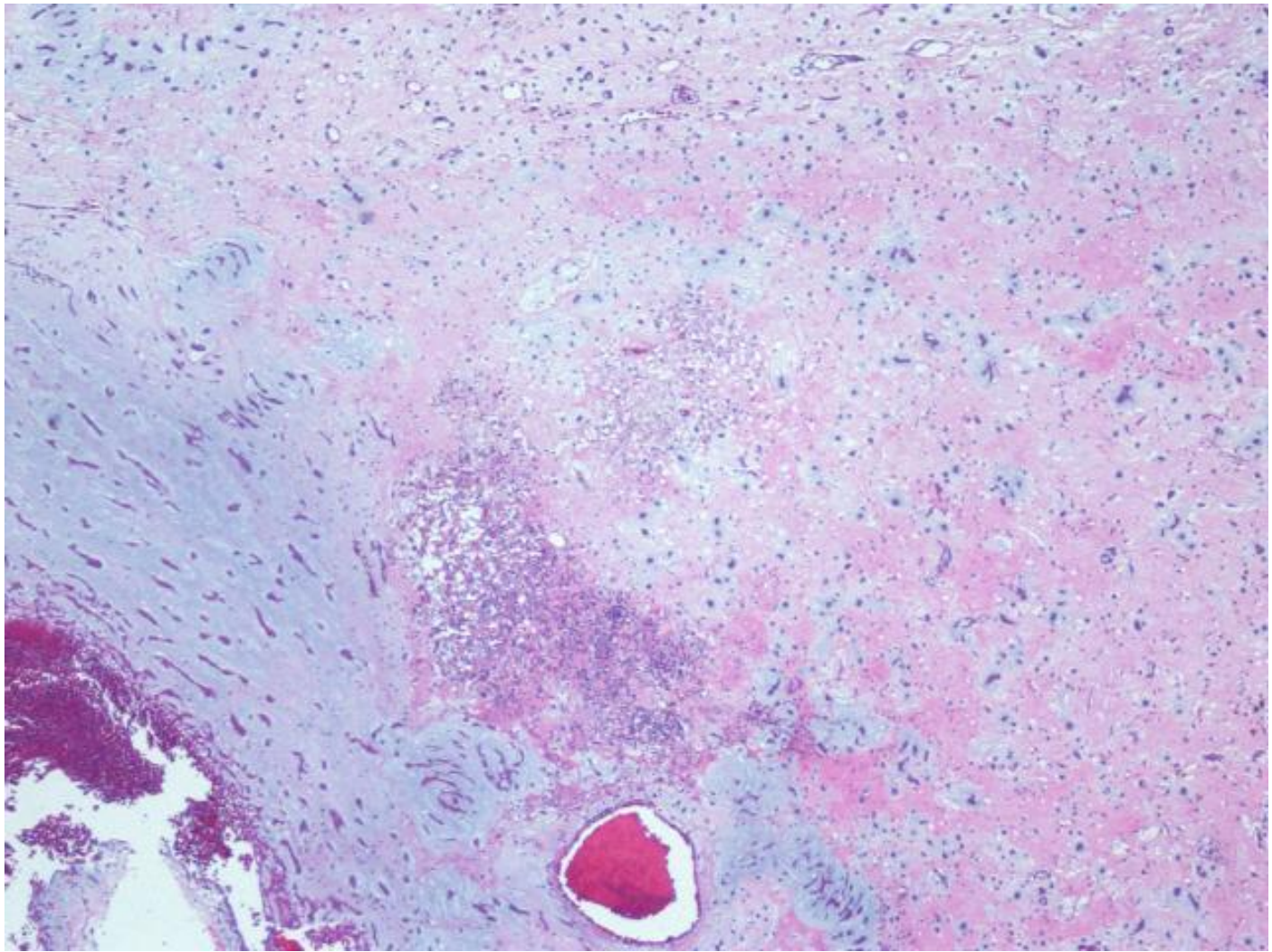


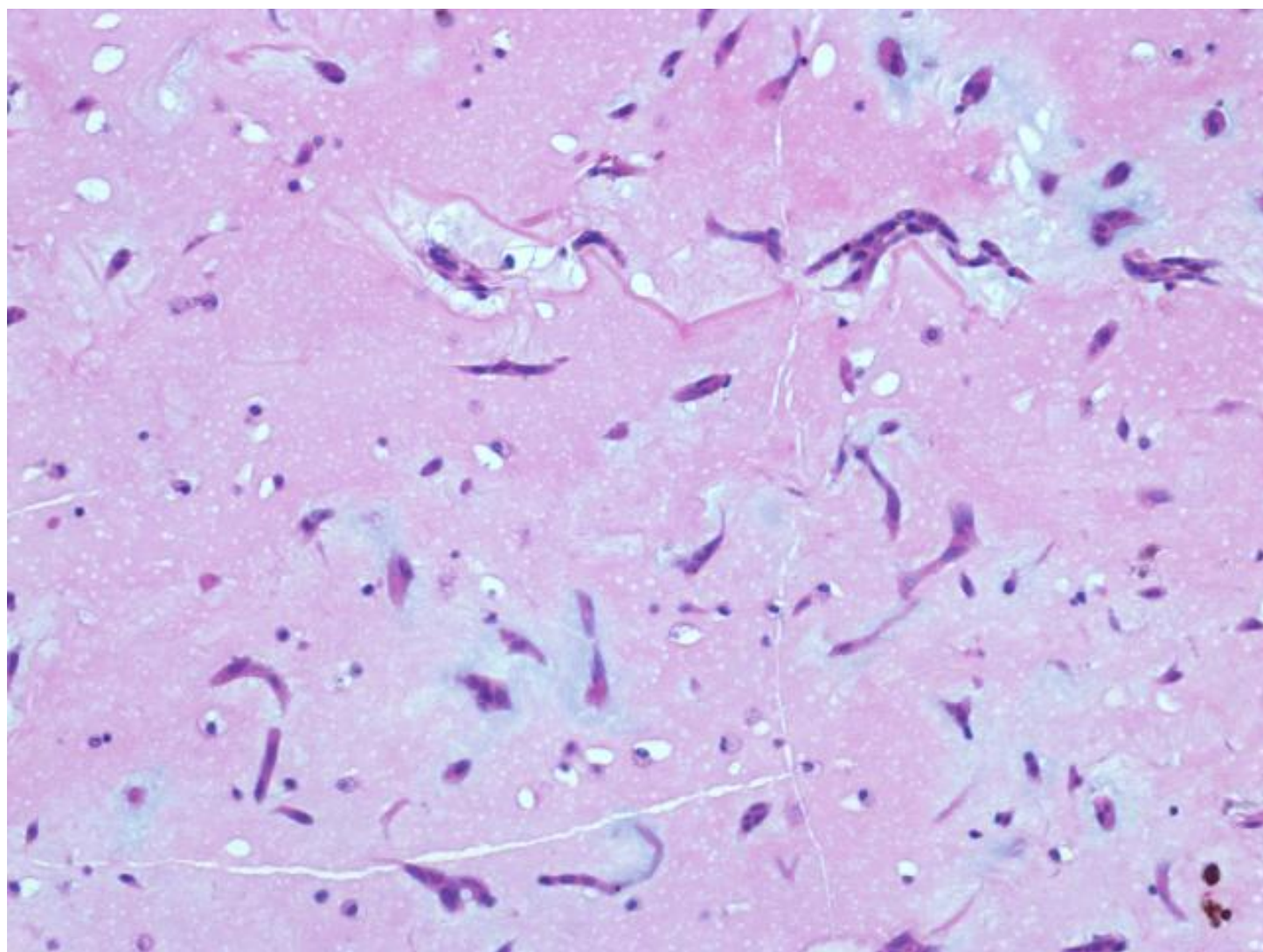
# Squamous Carcinoma

- All participants answered squamous carcinoma (1 point)

# Case E

- Female-67-excision of mass in left atrium.  
History of syncope.





# Atrial Myxoma

- All participants answered atrial myxoma (1 point)

# Circulation 44

Cases F - J

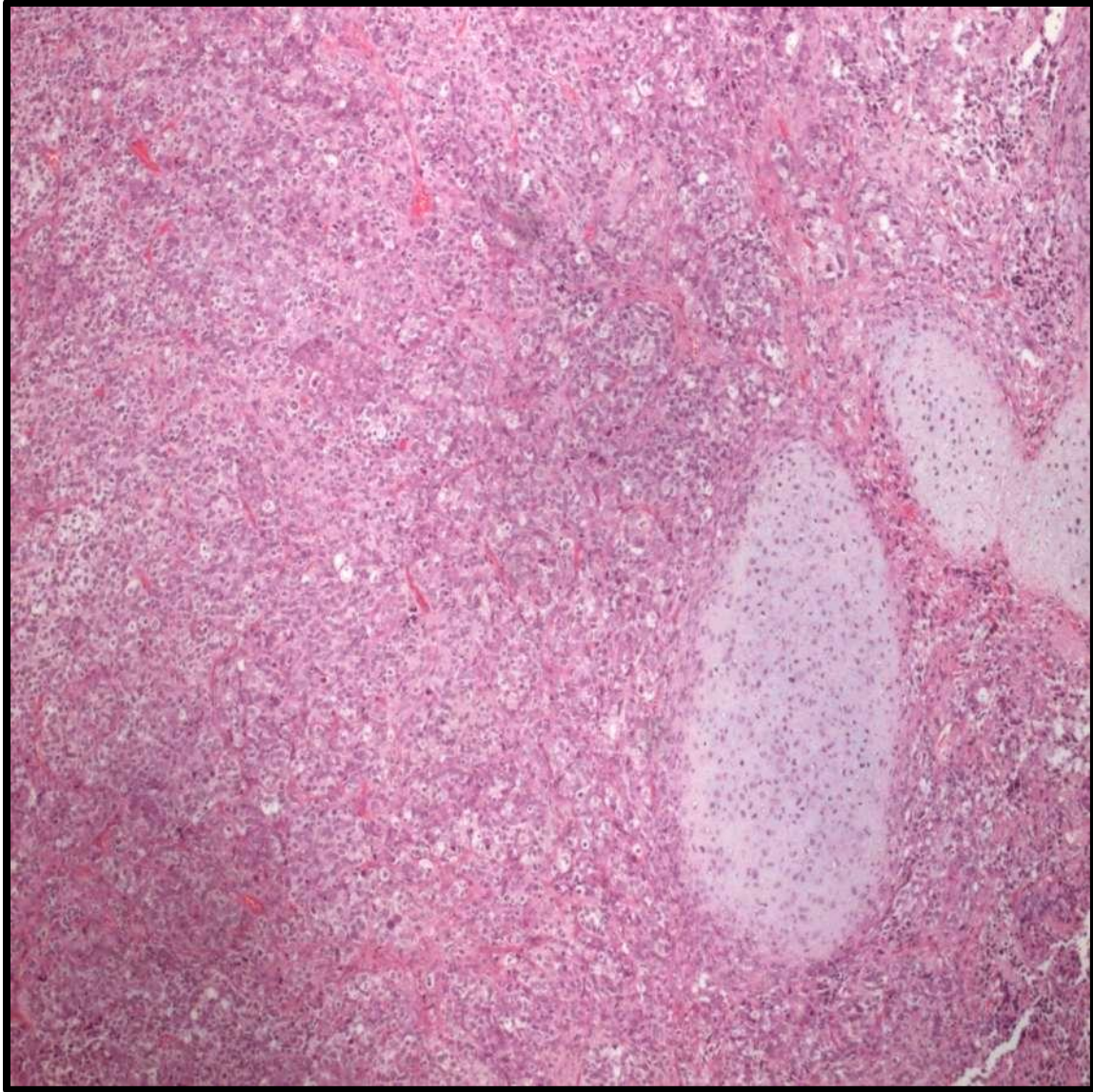
# Case F

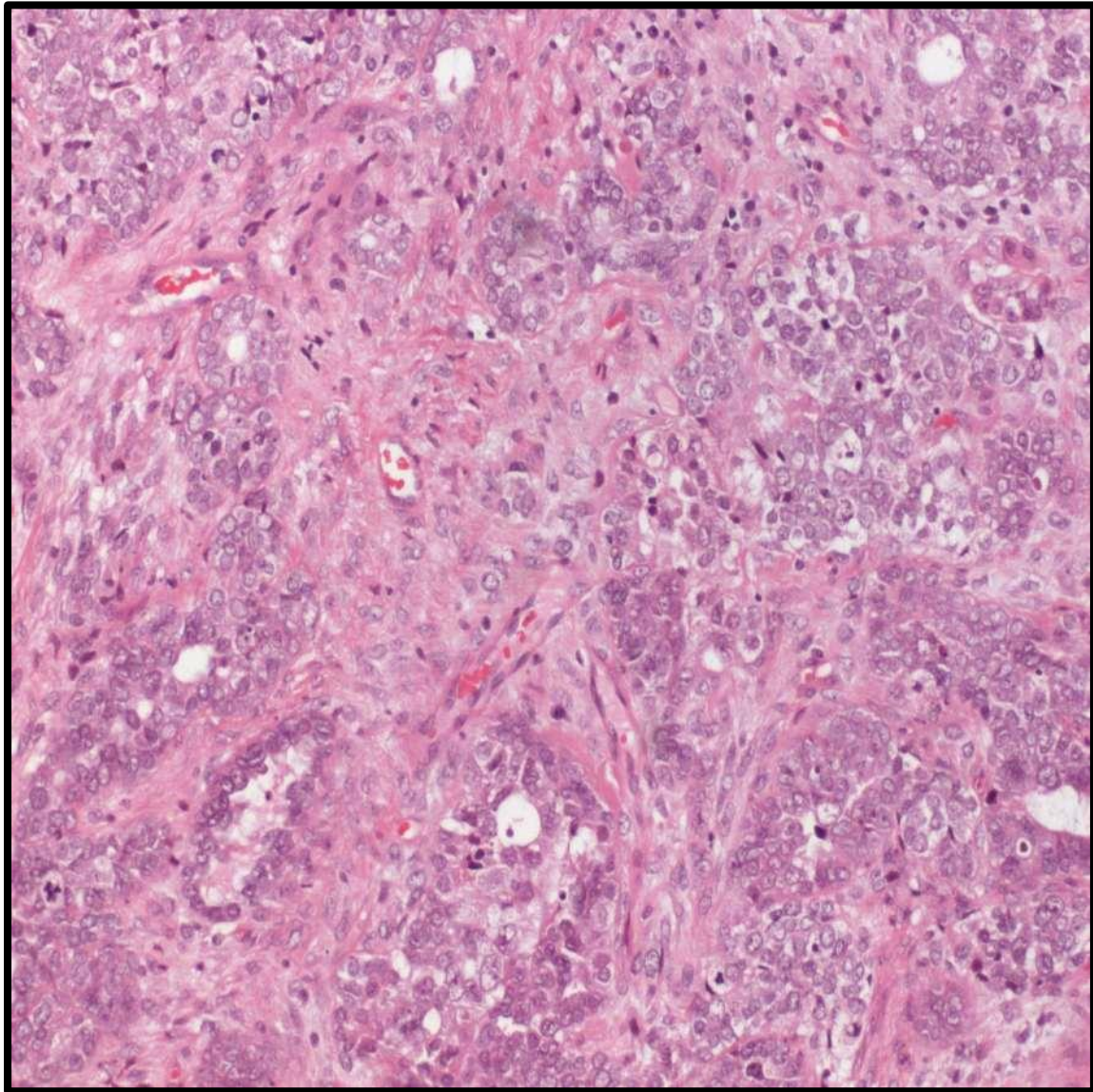
**66 year old female**

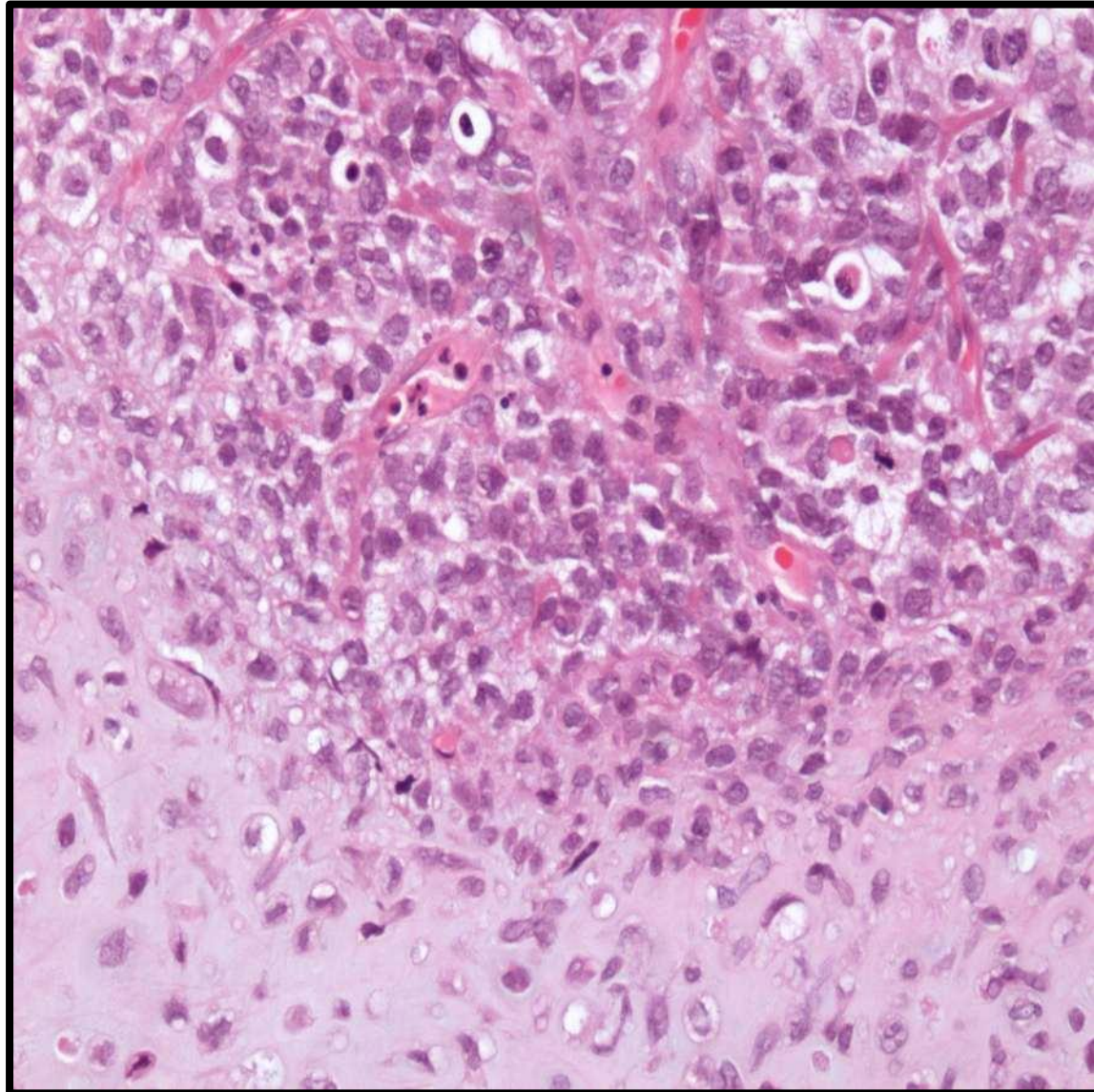
**Post menopausal bleeding**

**Endometrial curettings**









**CARCINOSARCOMA  
WITH  
HETEROLOGOUS  
ELEMENTS**

**121 responses – all score 1**

**Carcinosarcoma  
(with heterologous elements)**

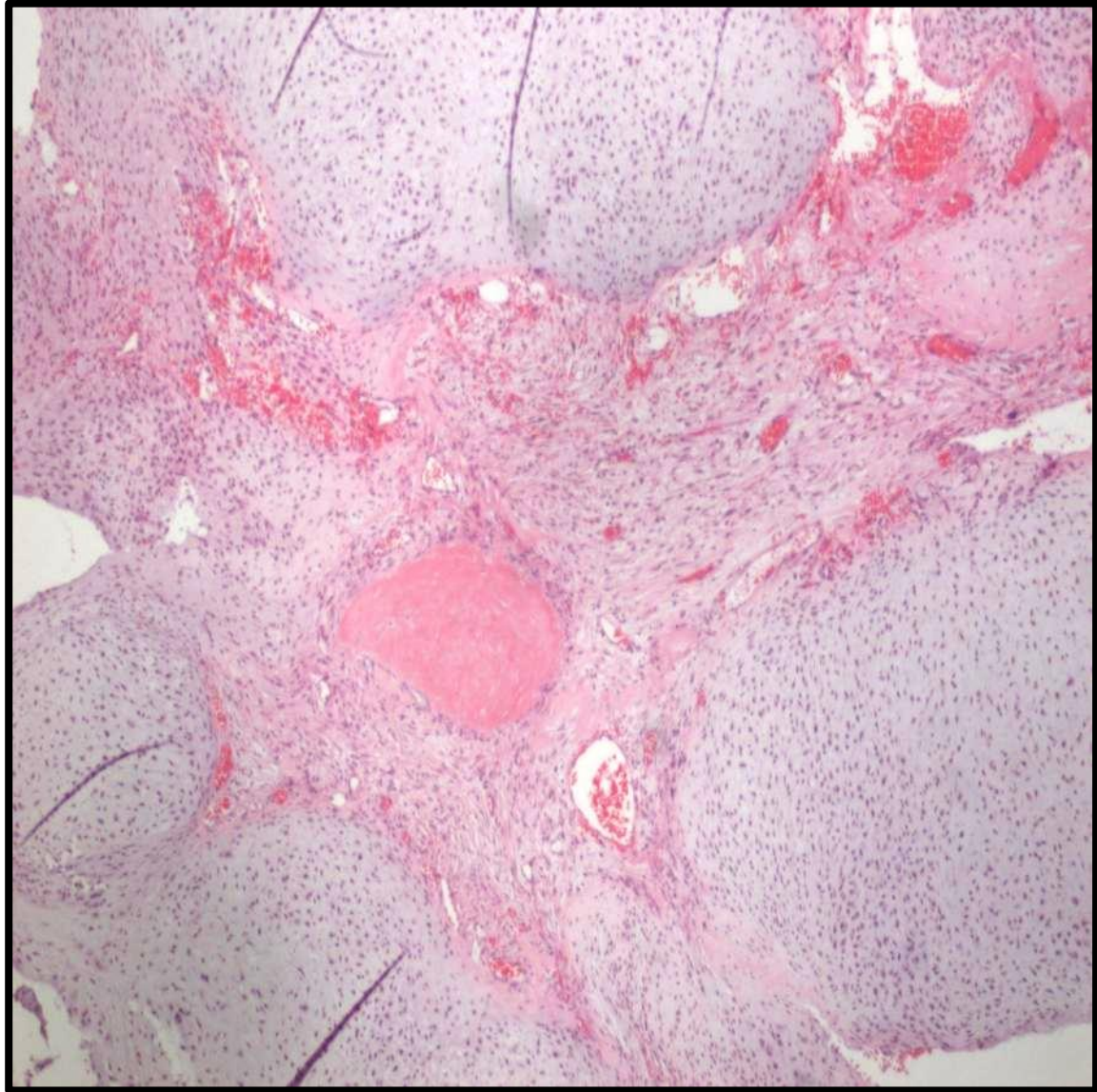
**Malignant mixed Mullerian tumour  
(with heterologous elements)**

# Case G

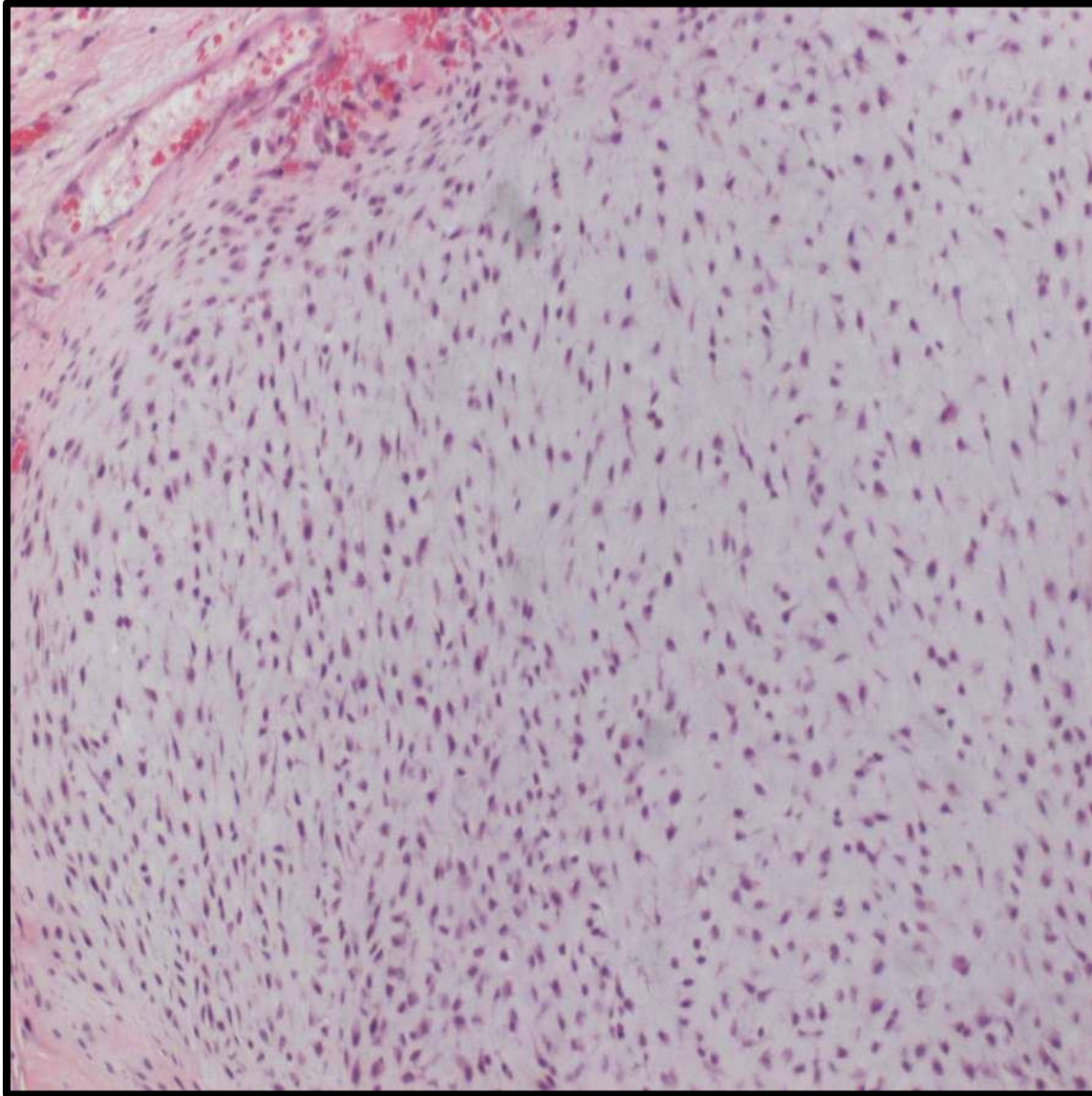
**73 year old male**

**Pathological fracture proximal femur**

**Tumour debulked**







# CHONDROSARCOMA

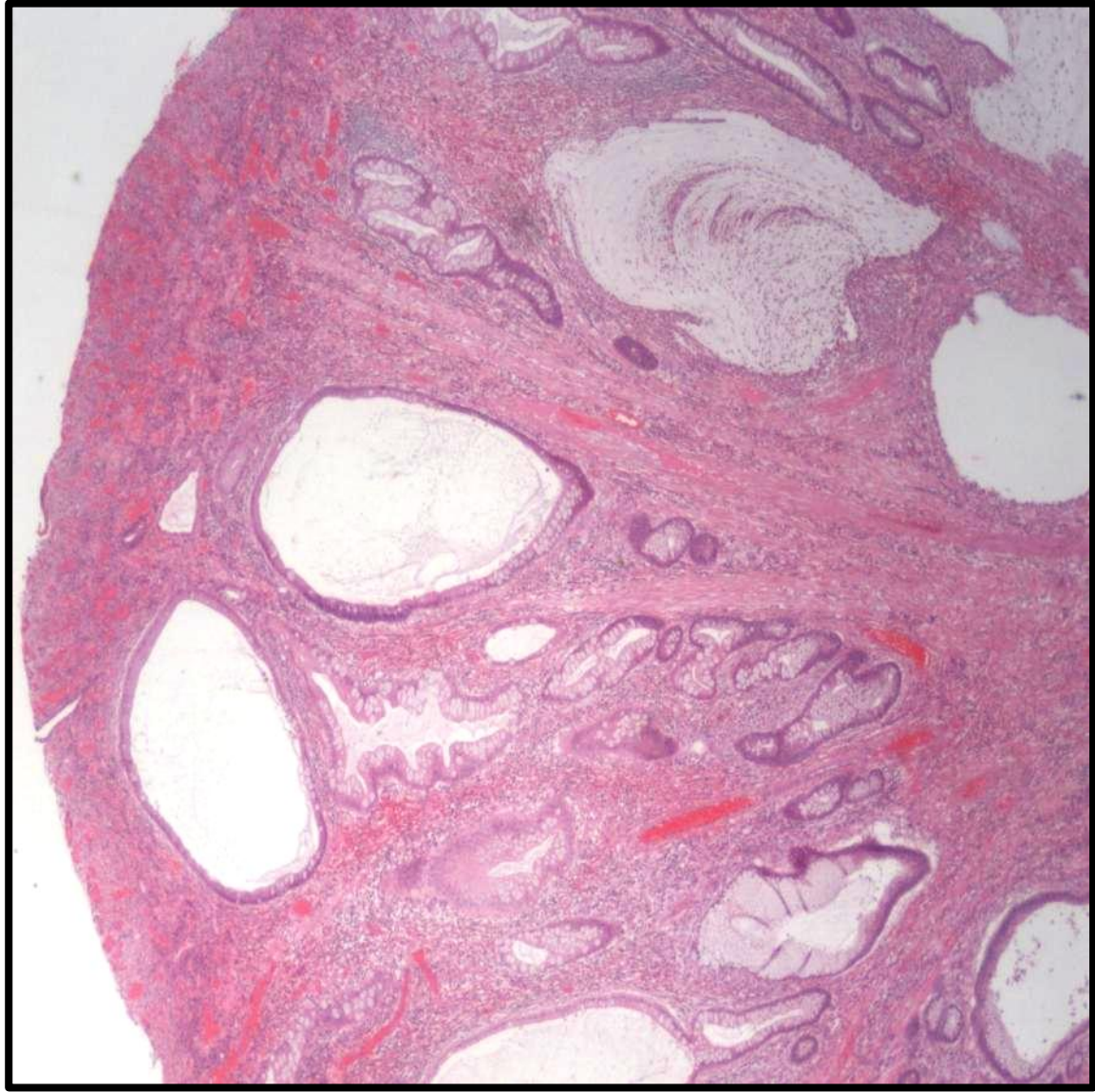
**120 responses – score 1**  
**Chondrosarcoma**

**1 response – score 3**  
**Chondromyxoid fibroma**

# Case H

**70 year old male**

**Polyp in transverse colon**



# **INFLAMMATORY POLYP**

**118 responses – score 1**  
**Inflammatory polyp & variations**

**3 responses – score 2**  
**Low grade tubular adenoma with mucosal  
displacement**

**Tubular adenoma with pseudoinvasion**

**Adenomatous polyp**



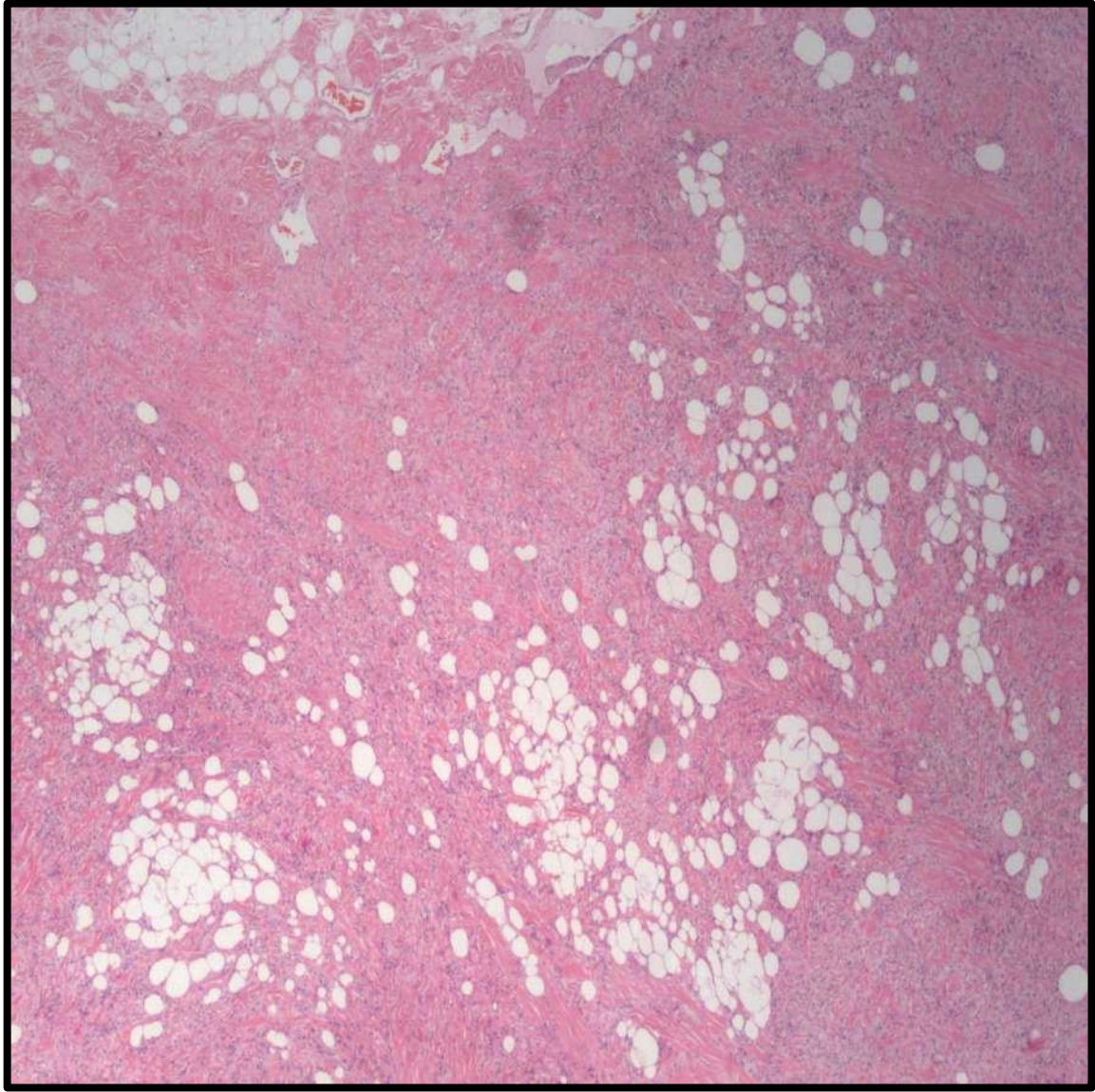
# Case I

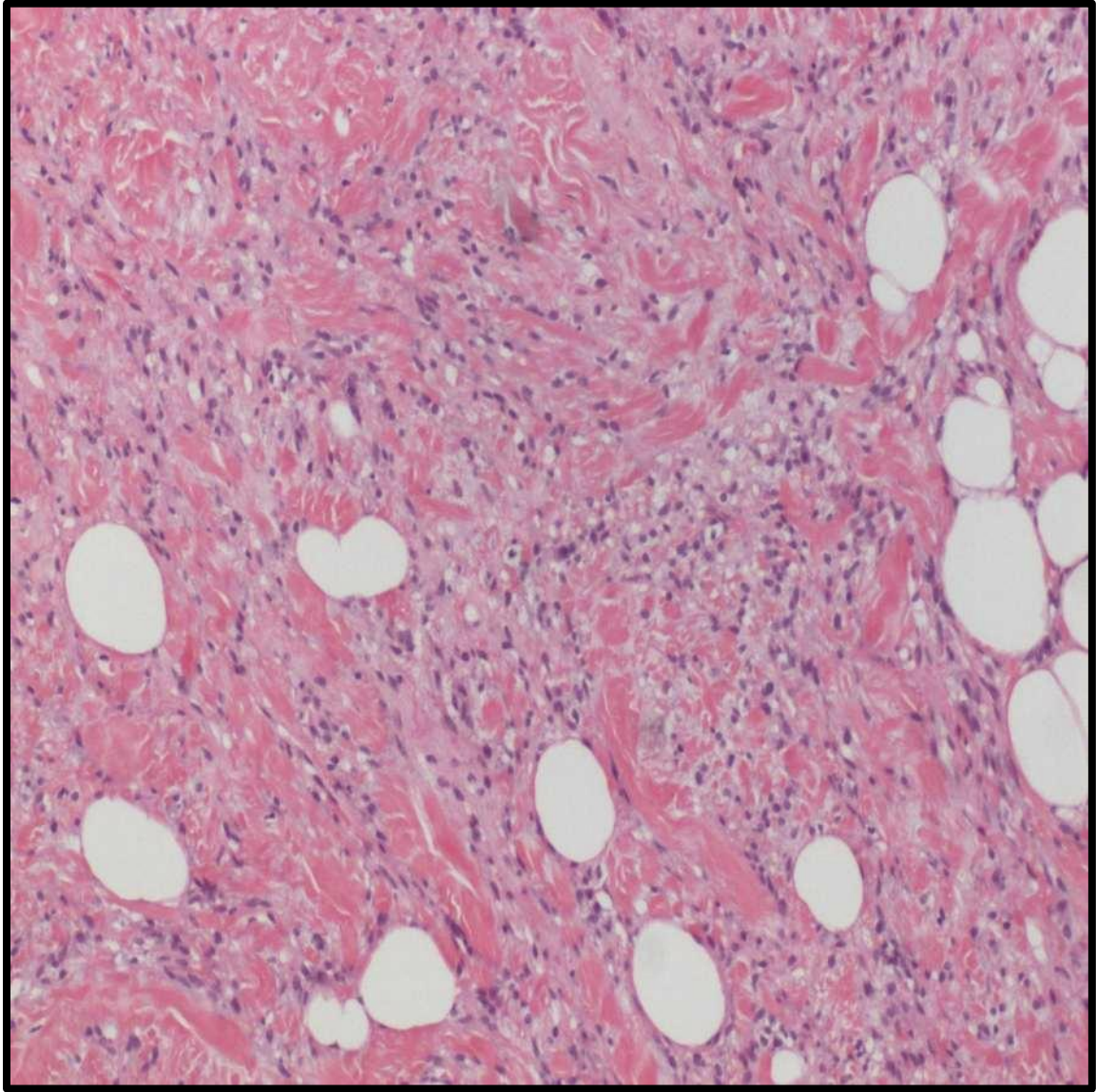
**66 year old male**

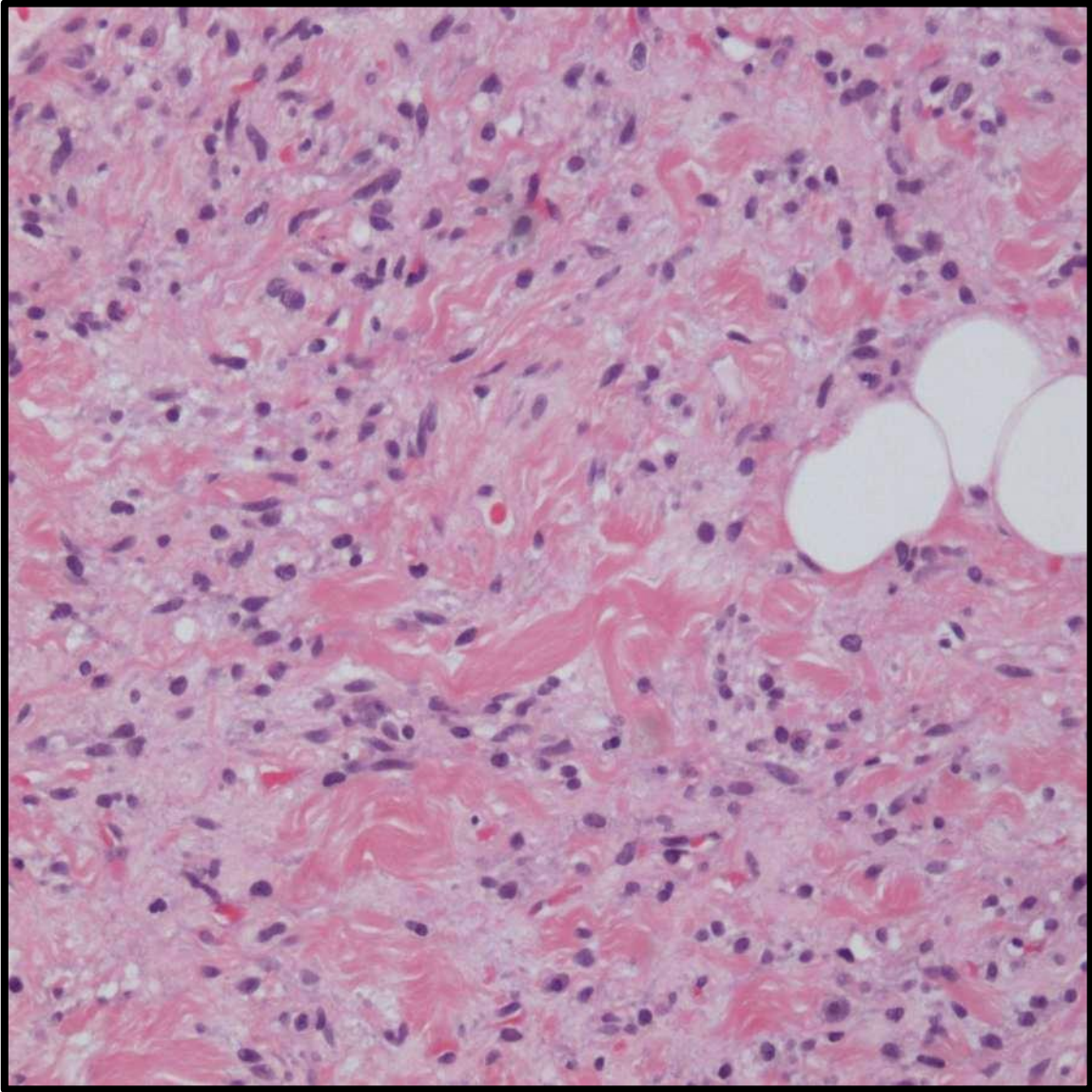
**Clinically subcutaneous cyst from neck**

**25mm maximum dimension**

**Macroscopically solid lesion**







# **SPINDLE CELL LIPOMA**

**118 responses – score 1**  
**Spindle cell lipoma**

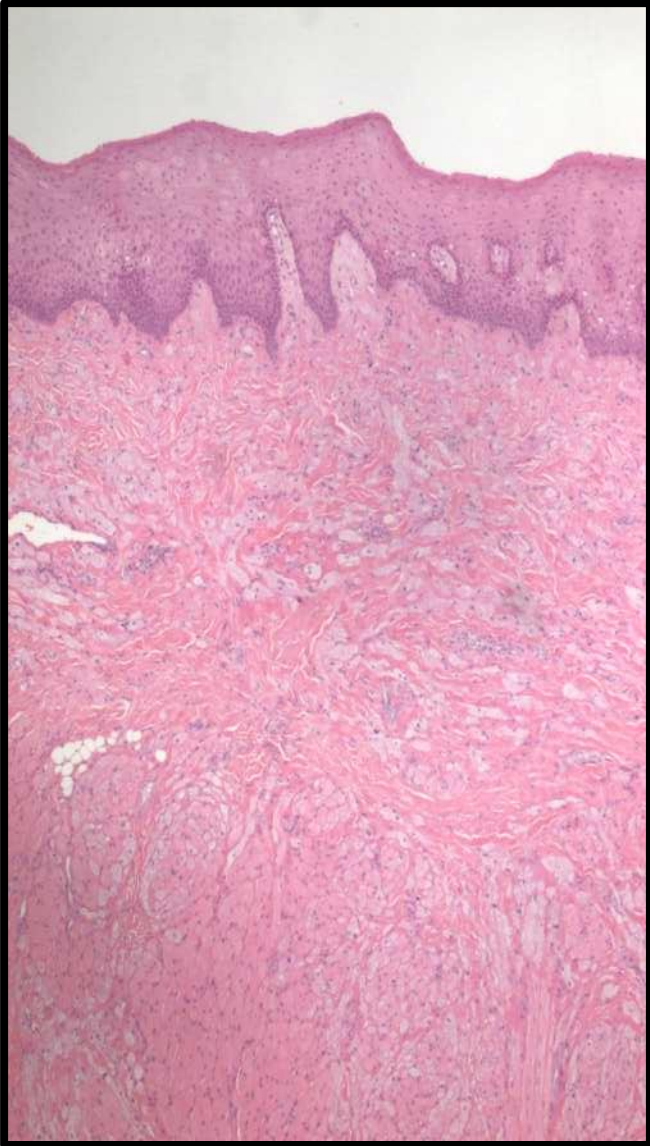
**3 responses – score 2**  
**Neurofibroma**

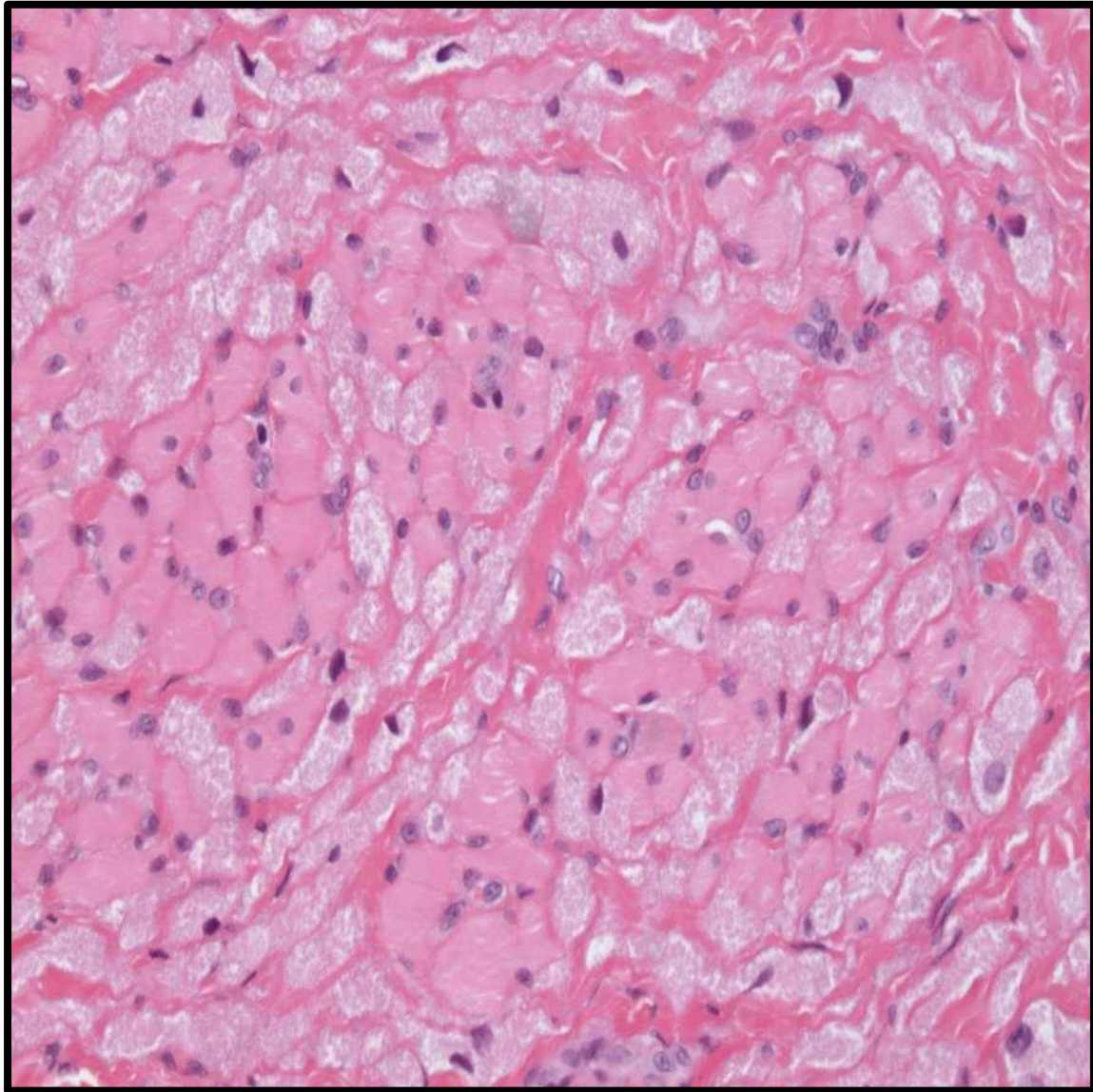
# Case J



**33 year old female**

**Soft lesion left lateral border  
of the tongue**





# **GRANULAR CELL TUMOUR**

**121 responses – score 1**

**Granular cell tumour**