

# **Scotland and Northern Ireland EQA Scheme**

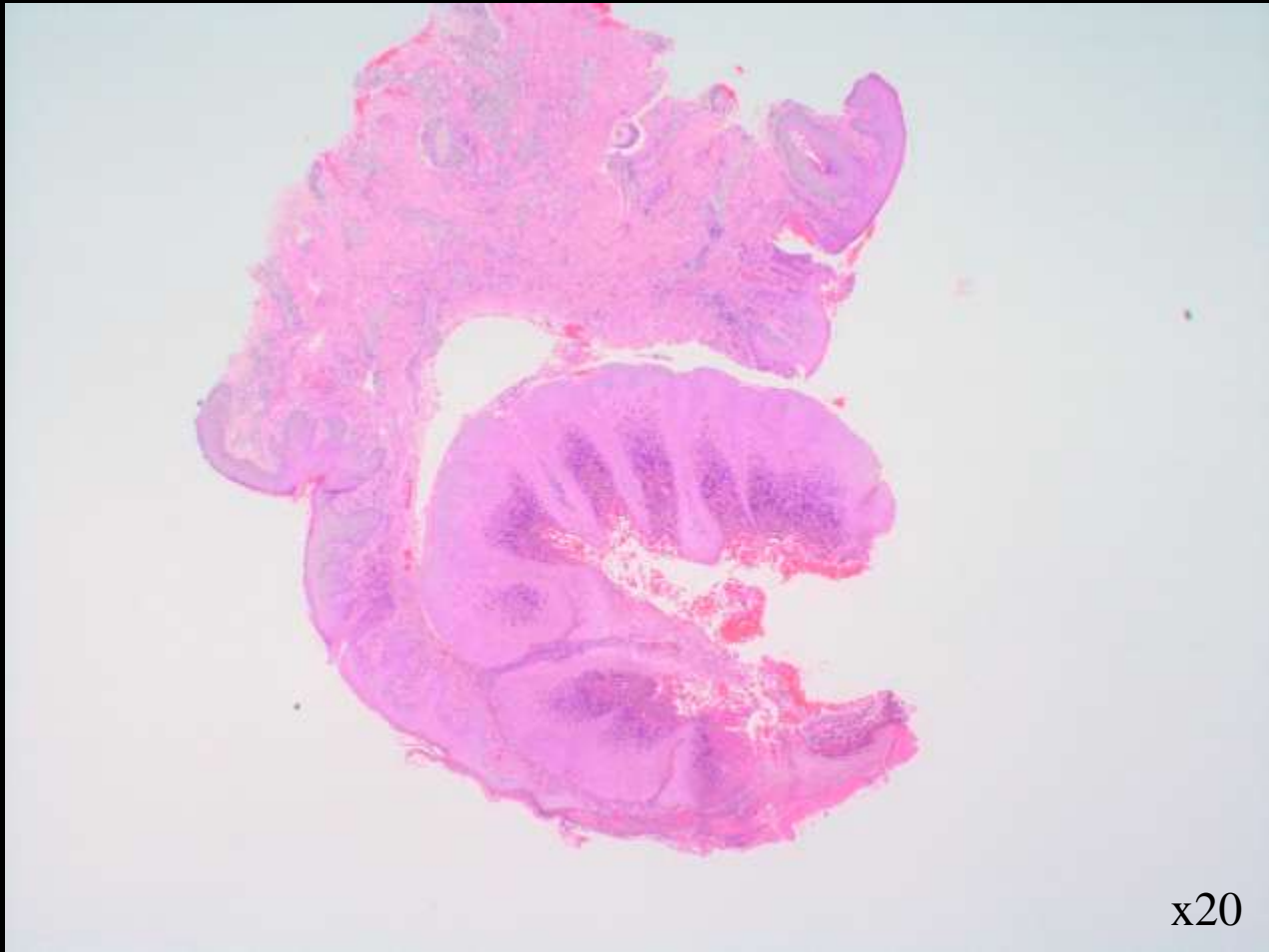
Circulation 45

Cases A to E

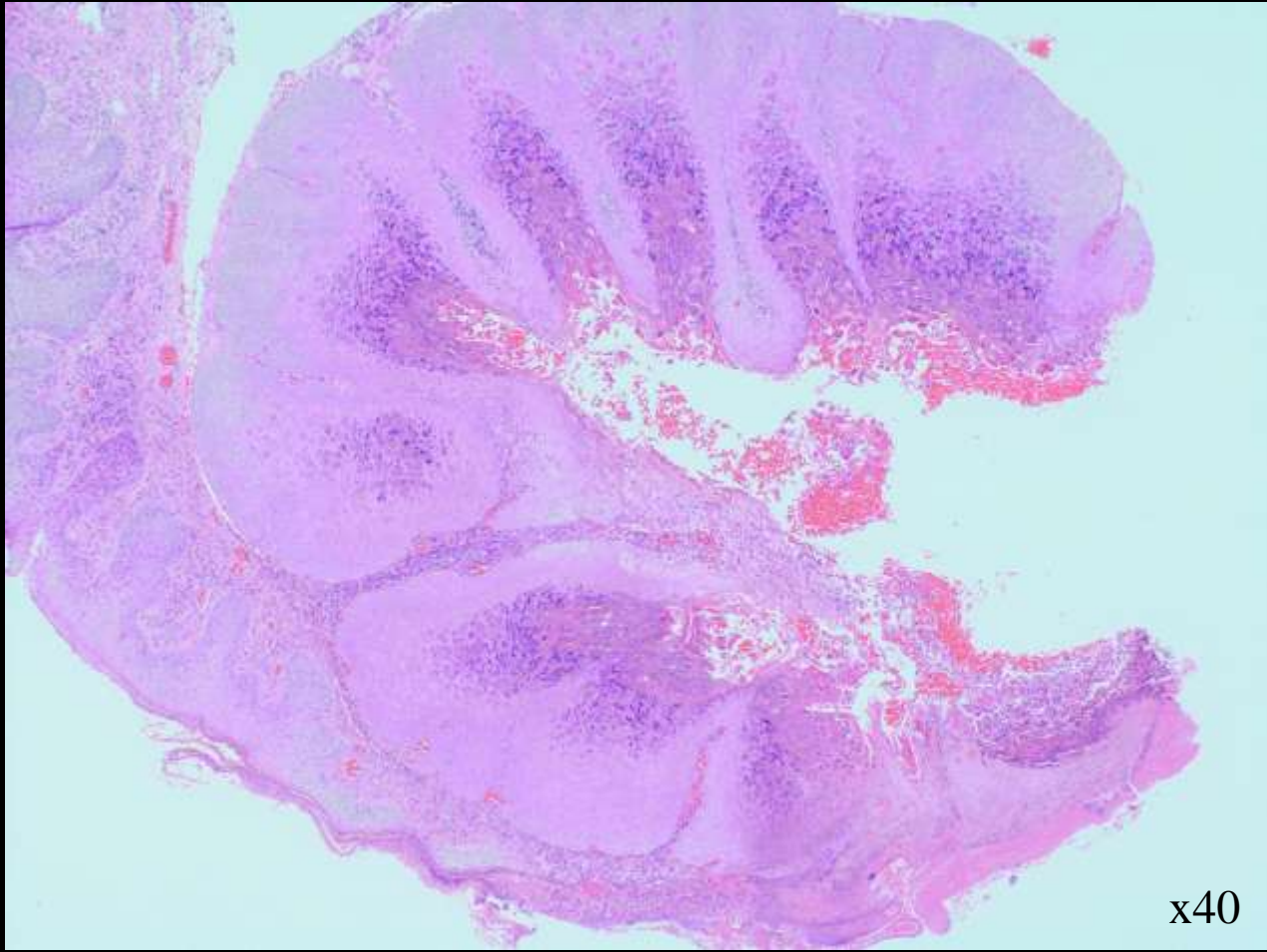
*Presented by Dr Katie Robertson*

# Case A

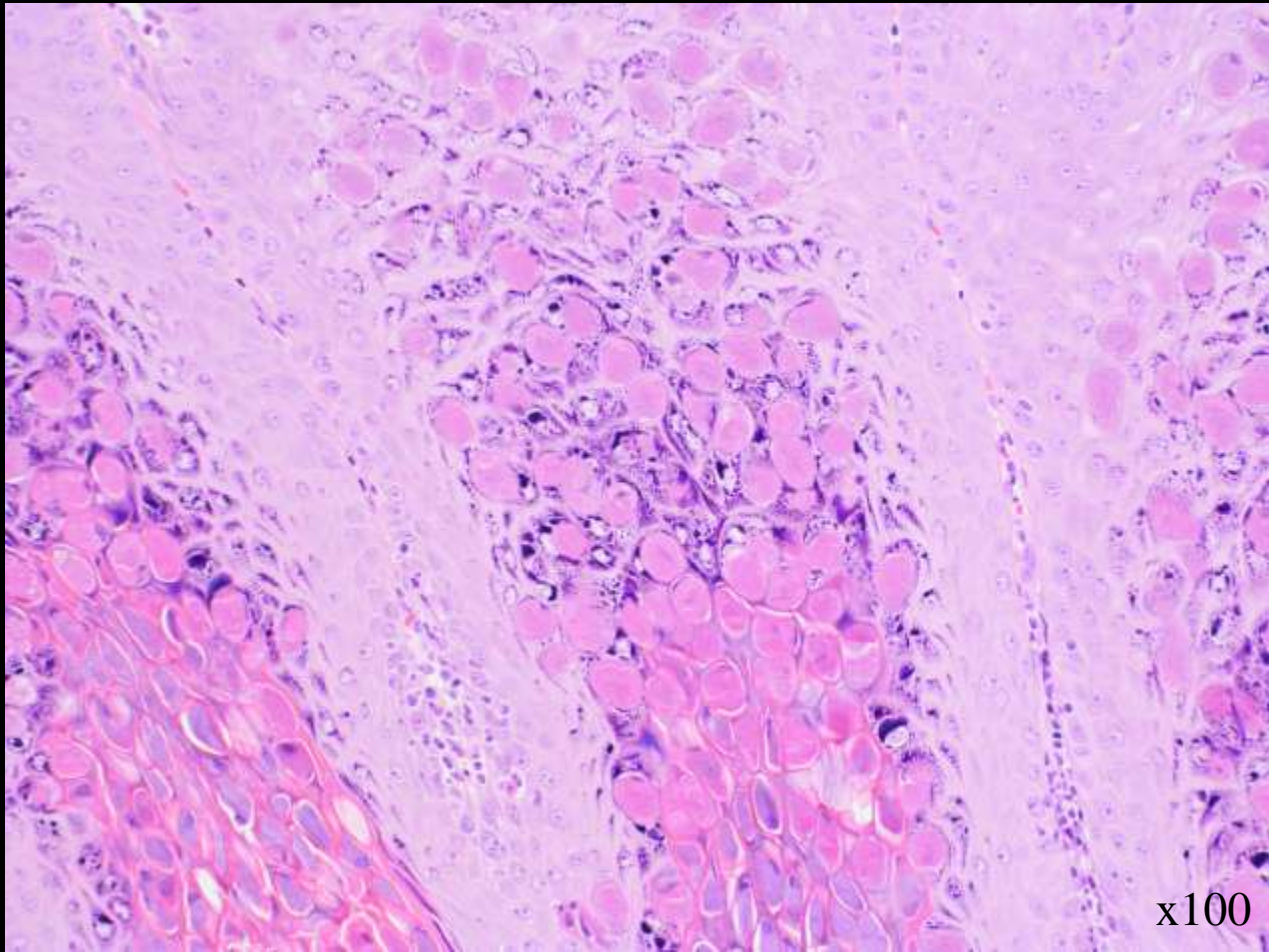
- 51 year old male
  - Slow growing lesion on scrotum
  - Present for 6 months



x20



x40



x100

# Case A

- Diagnosis:
  - Molluscum contagiosum

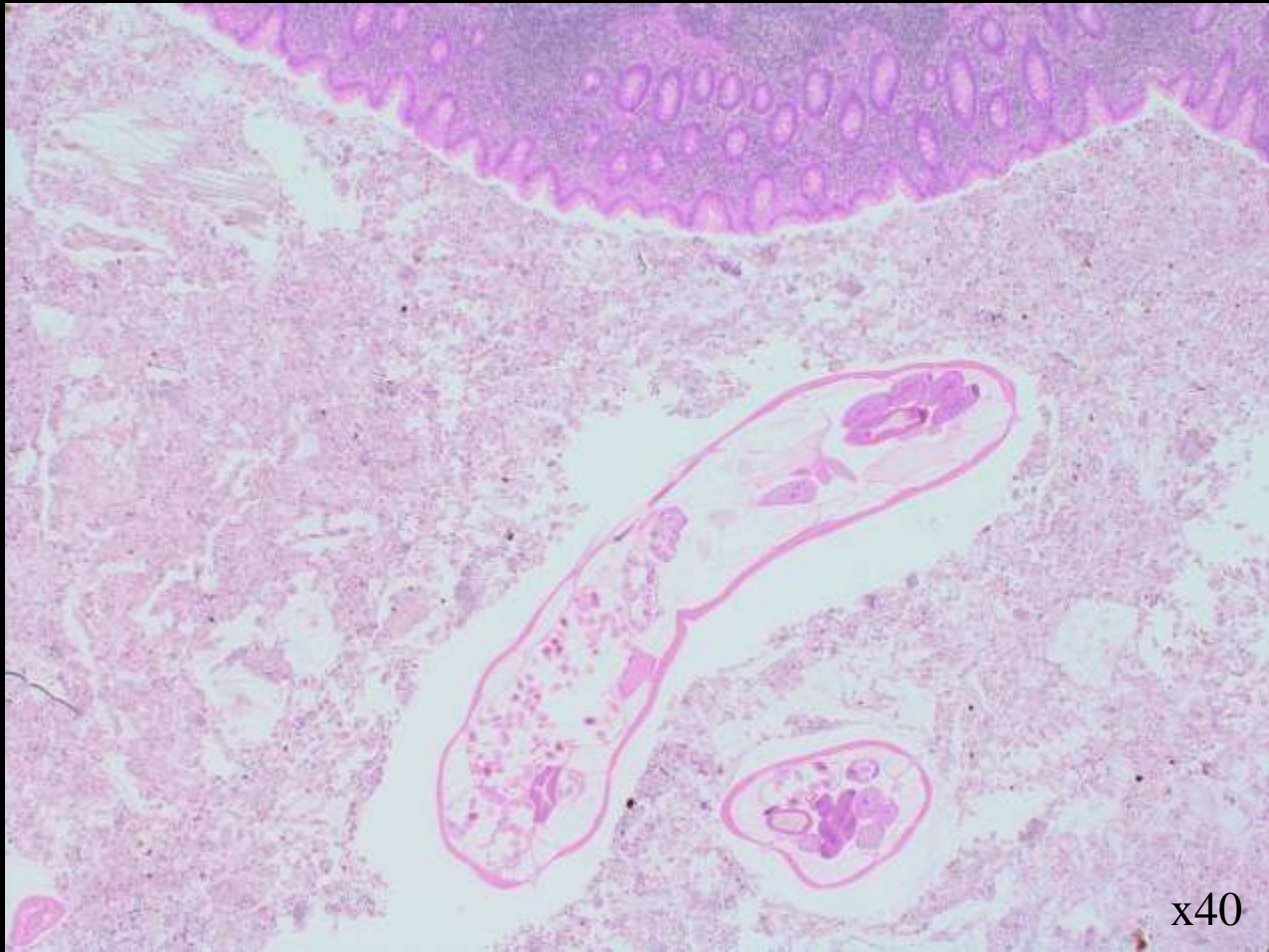
# Case A

- Responses: 120
  - Score 1
    - 118 – Molluscum contagiosum
    - 2 - Molluscum

# Case B

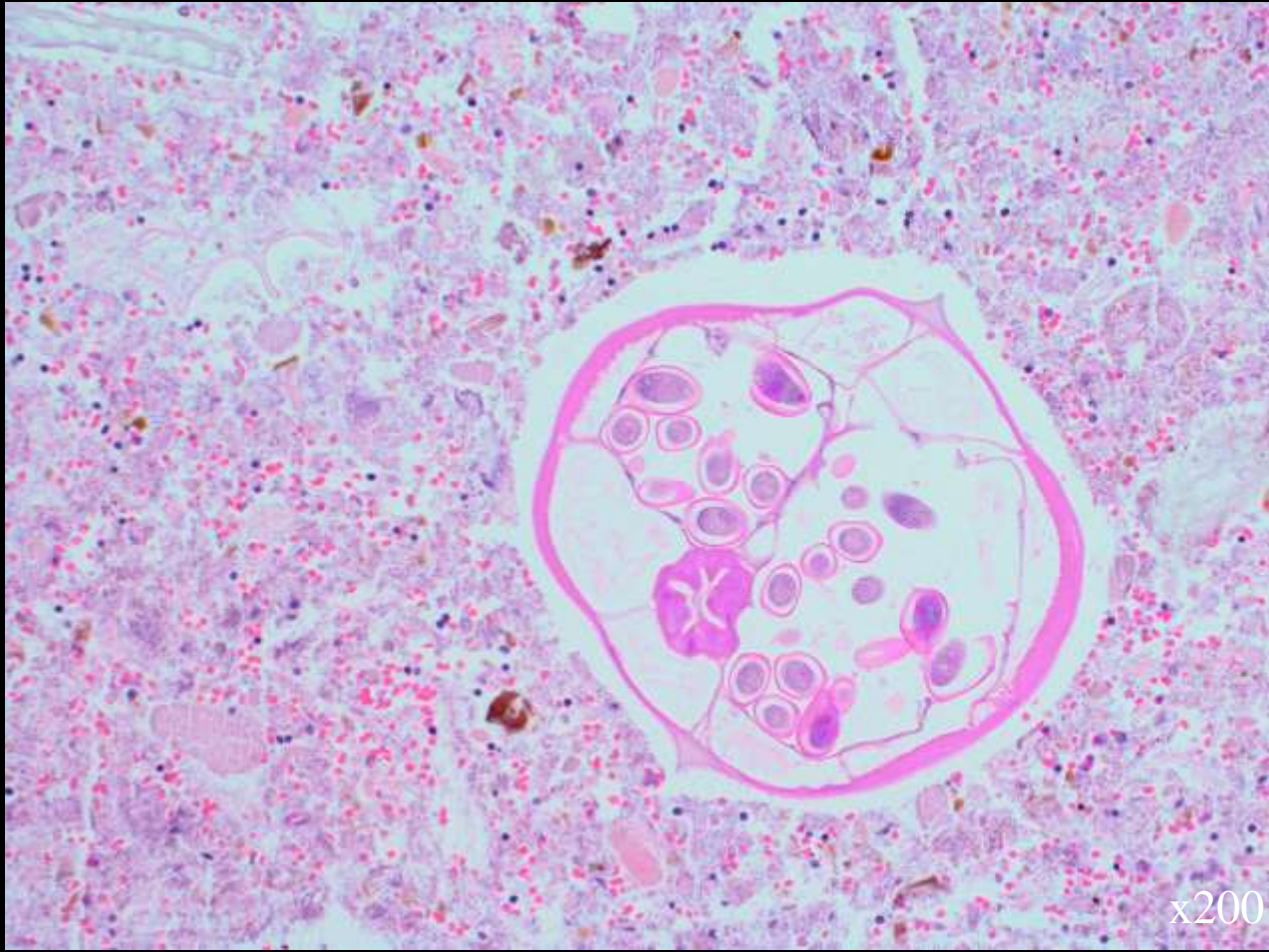
- 11 year old male
  - Right iliac fossa pain
  - Appendectomy performed











x200

# Case B

- Diagnosis:
  - *Enterobius vermicularis* (pinworm)

# Case B

- Responses: 120
  - Score 1
    - 118 – *Enterobius vermicularis* (pinworm)
    - 1 - Nemetode

# Case B

– Score 2

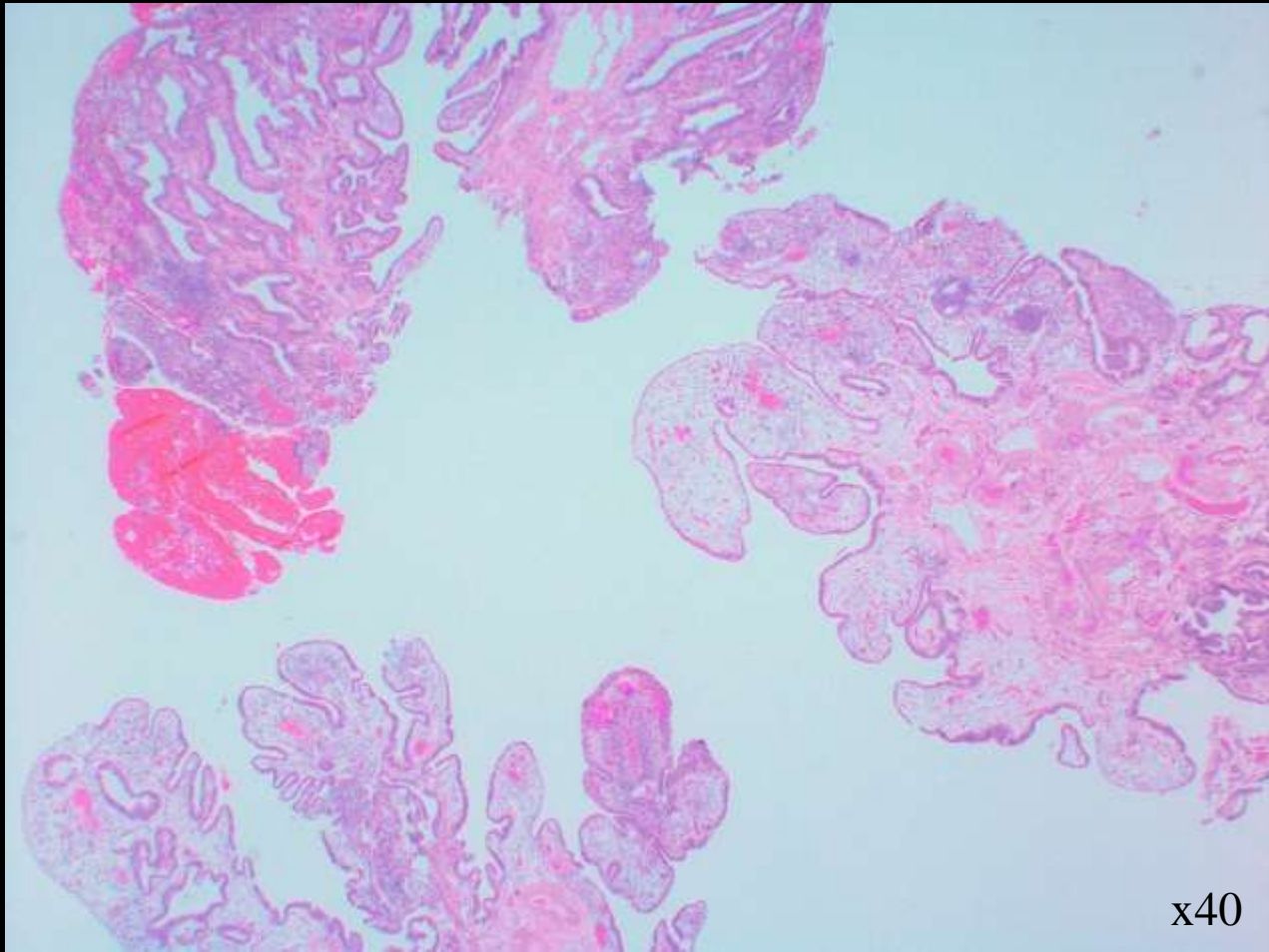
- 0

– Score 3

- 1 - Schistosomiasis

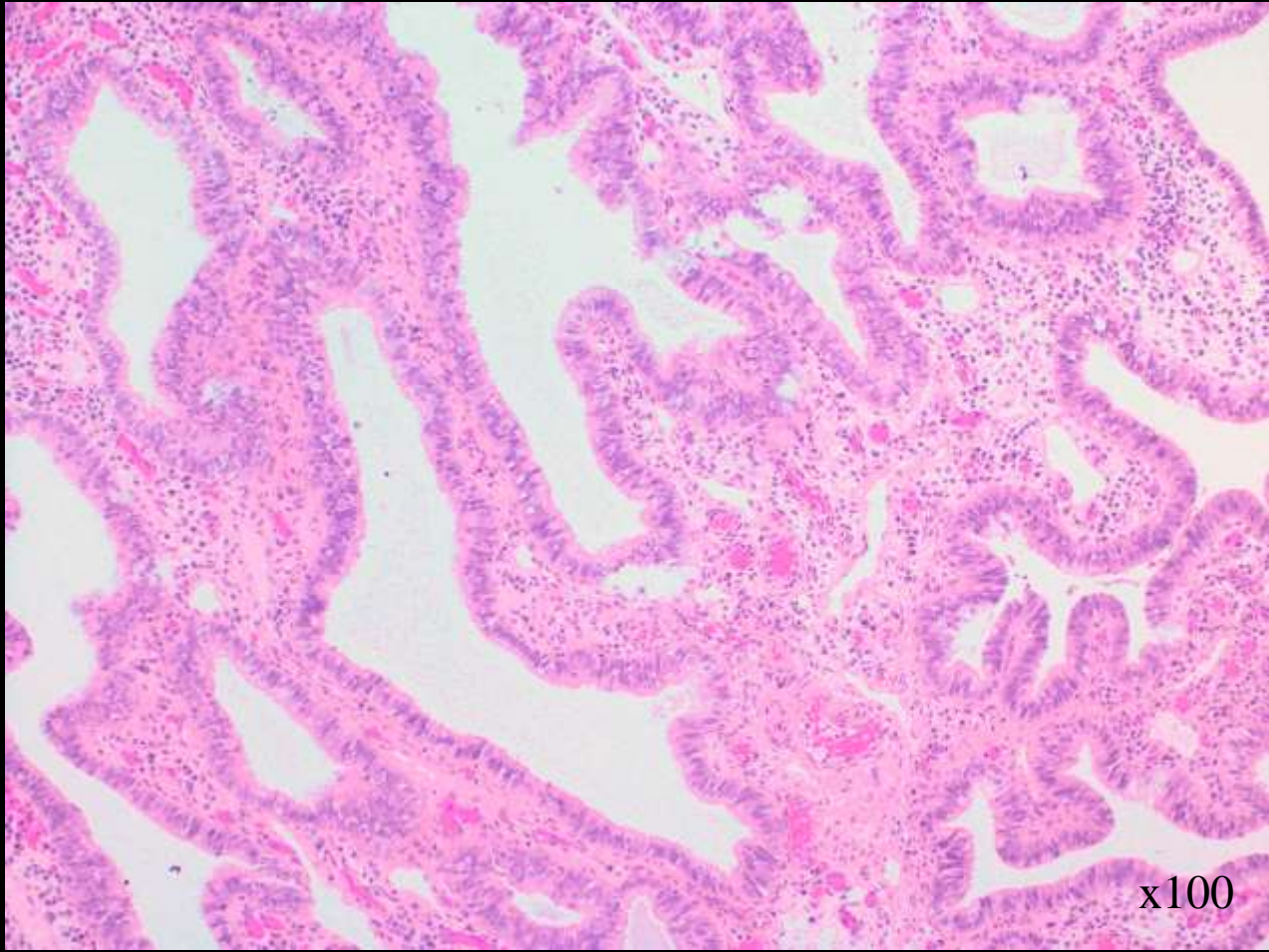
# Case C

- 40 year old female
  - Hysterectomy 2011
  - Vaginal Bleeding
  - Lesion noted in vaginal vault

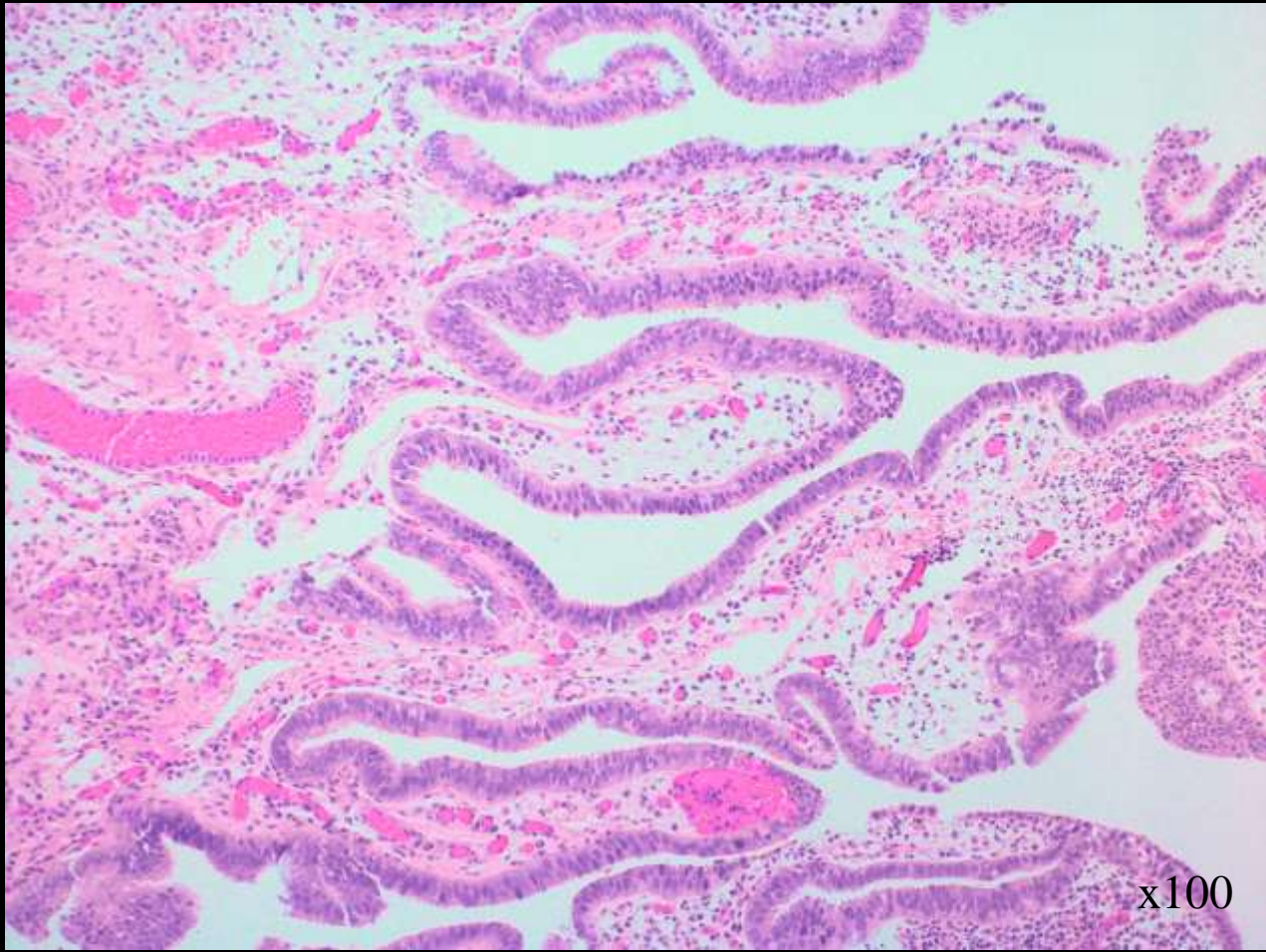


x40





x100



x100

# Case C

- Diagnosis:
  - Prolapsed fallopian tube

# Case C

- Responses: 119 ( 1x opt out)
  - Score 1
    - 112 - Prolapsed fallopian tube
    - 1 - Benign fallopian tube

# Case C

## – Score 2

- 1 – Prolapsed fallopian tube with serous tubal intraepithelial neoplasia
- 1 – CGIN vs prolapsed fallopian tube
- 1 – tubal metaplasia
- Benign, no dysplasia or malignancy

# Case C

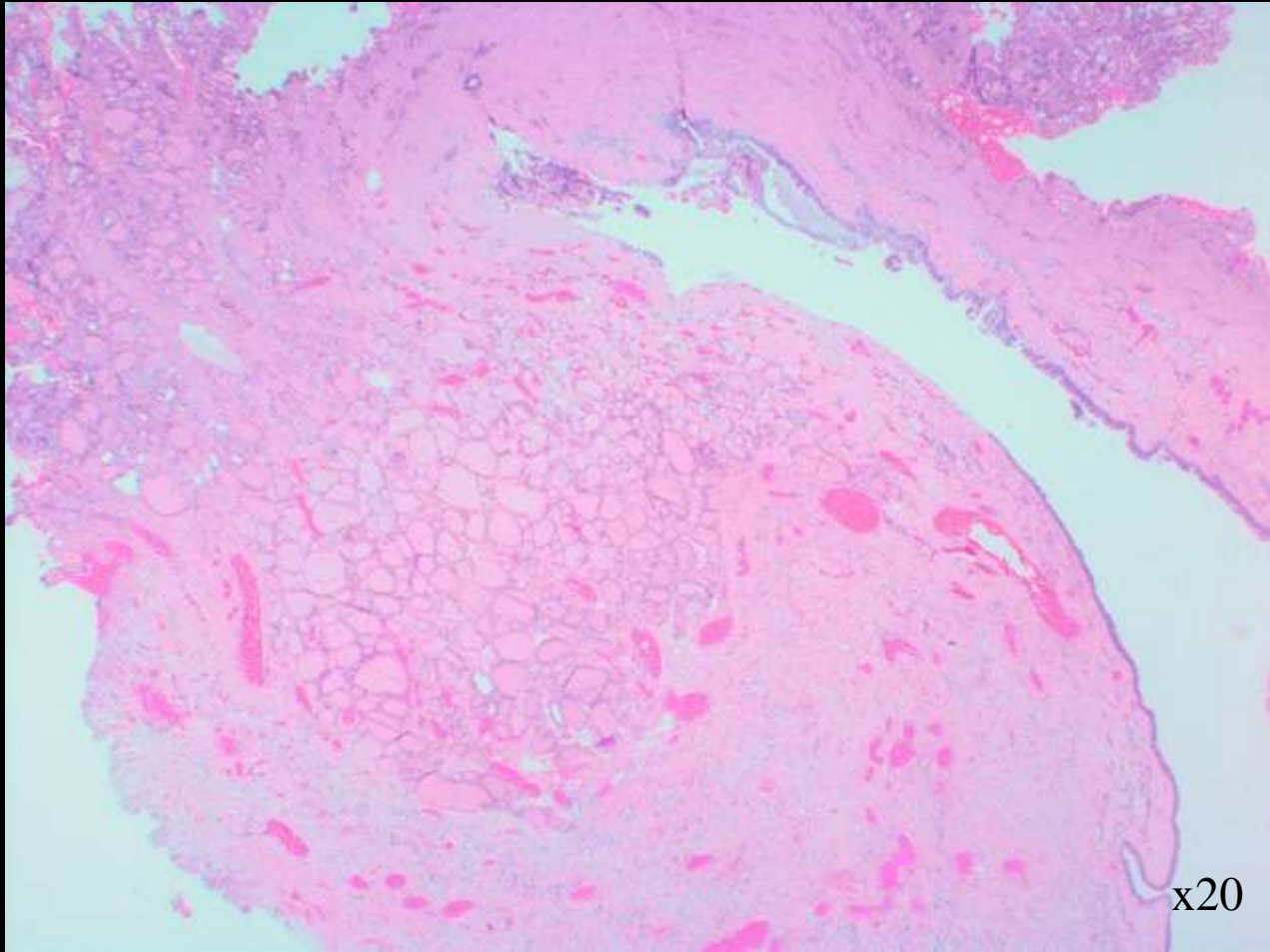
## – Score 3

- 1 – Endometrial polyp in cervical endometriosis
- 1 - Hidradenoma papilliferum
- 1 - High grade CGIN

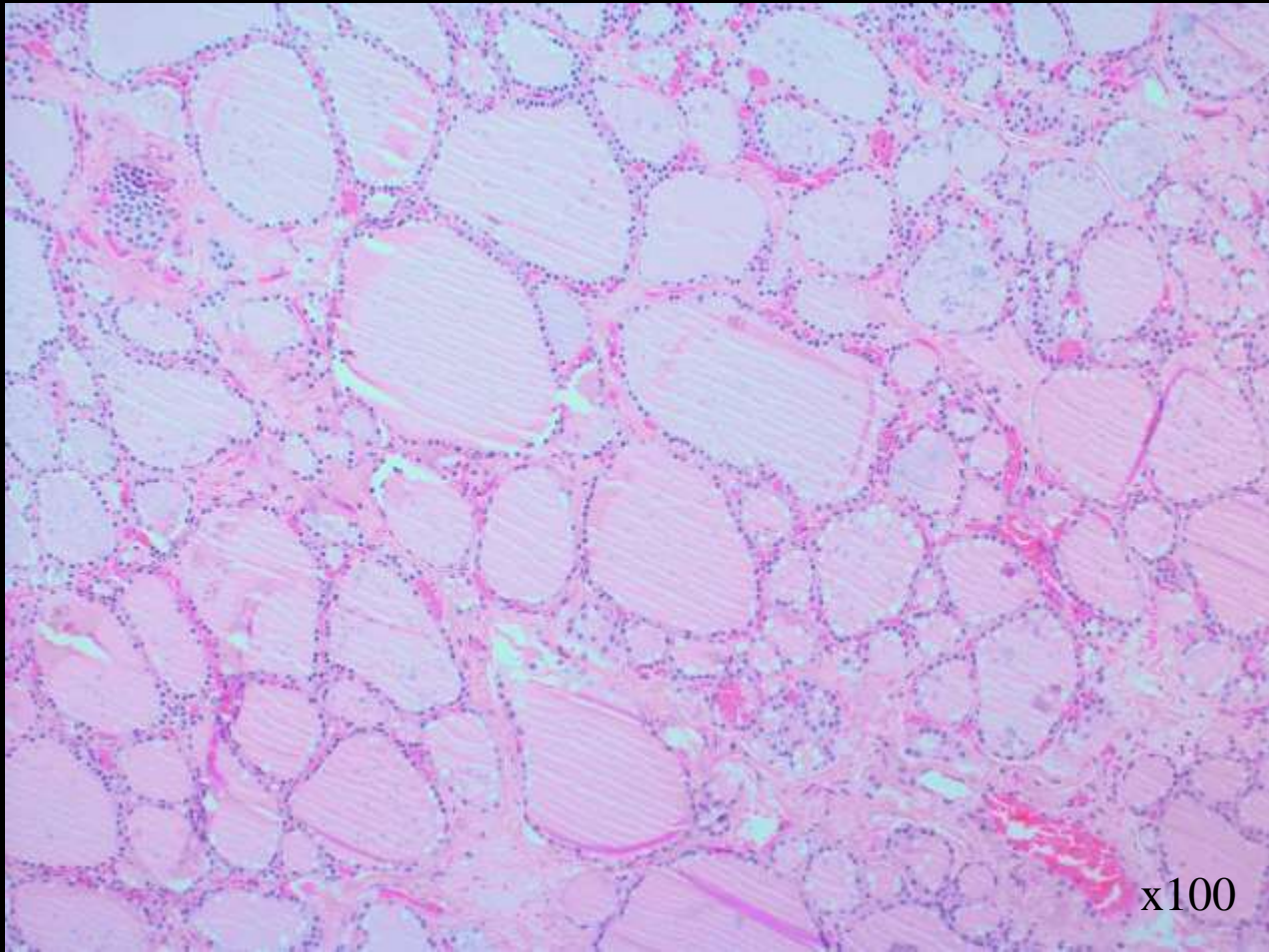
# Case D

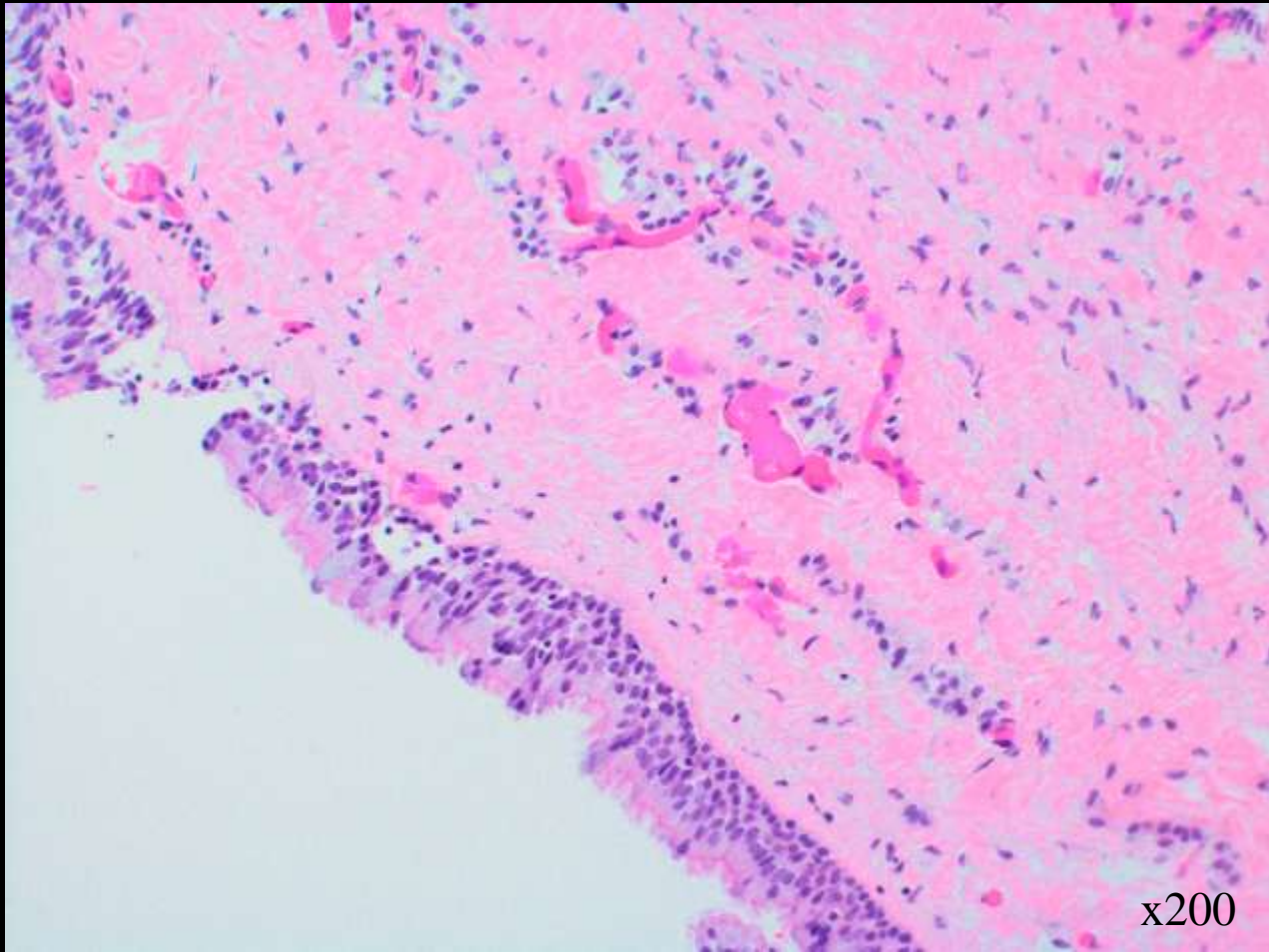
- 53 year old female
  - Cyst associated with hyoid bone

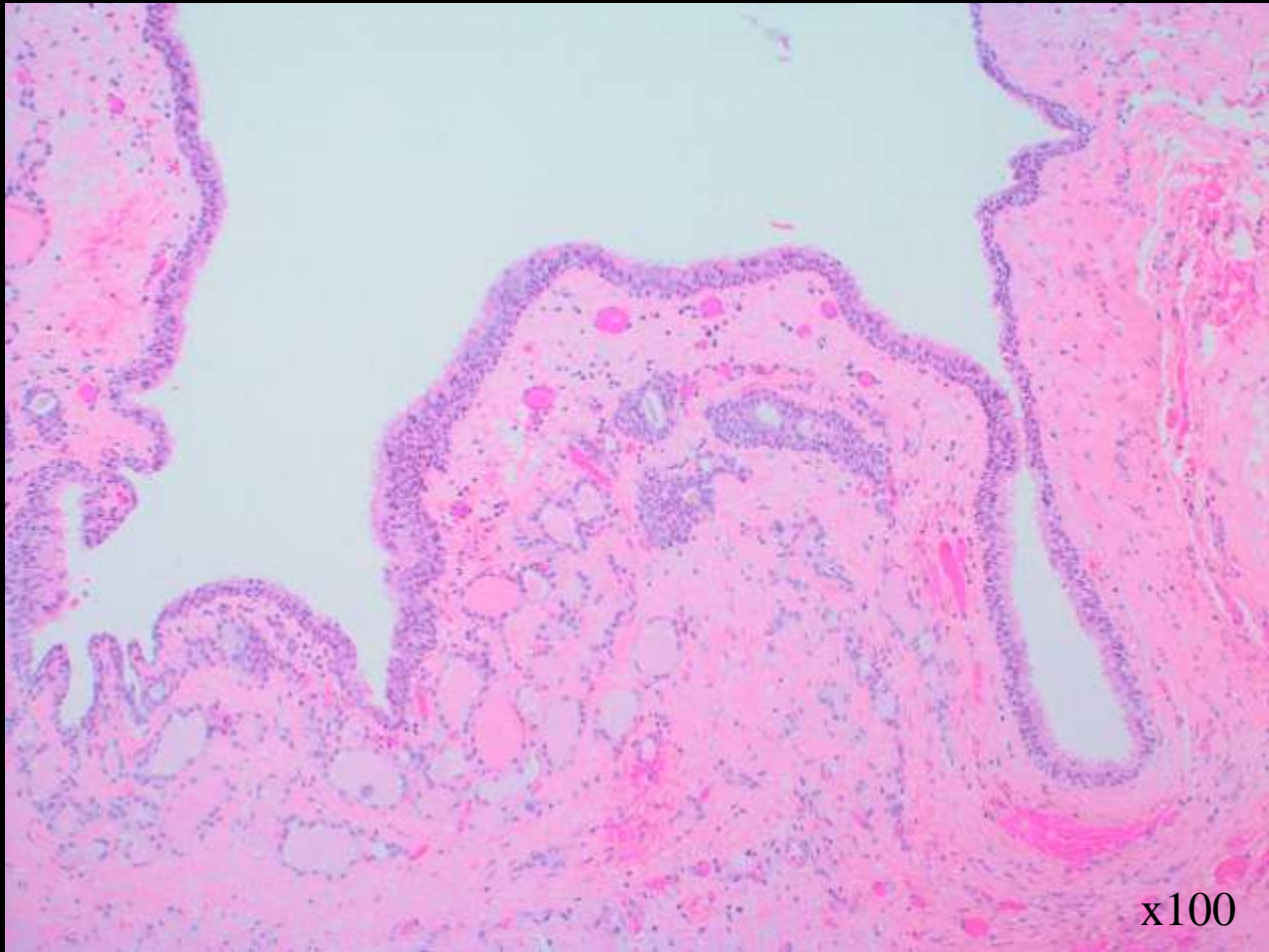












# Case D

- Diagnosis:
  - Thyroglossal duct cyst

# Case D

- Responses: 120
  - Score 1
    - 118 - Thyroglossal cyst/Thyroglossal duct cyst
    - 1 - Thyroglossal duct remnant with aberrant thyroid tissue

# Case D

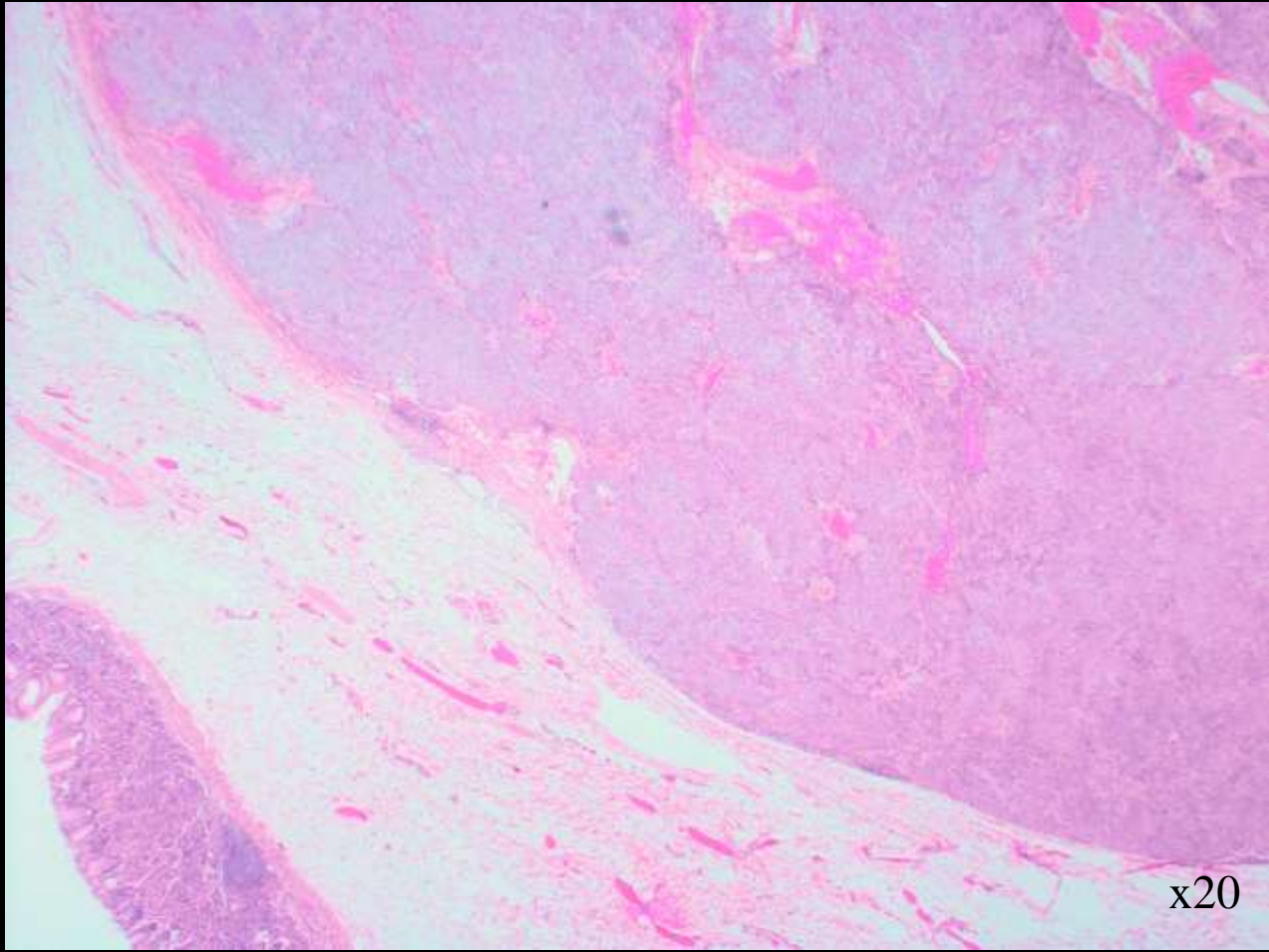
– Score 2

- 1 – Ectopic thyroid

# Case E

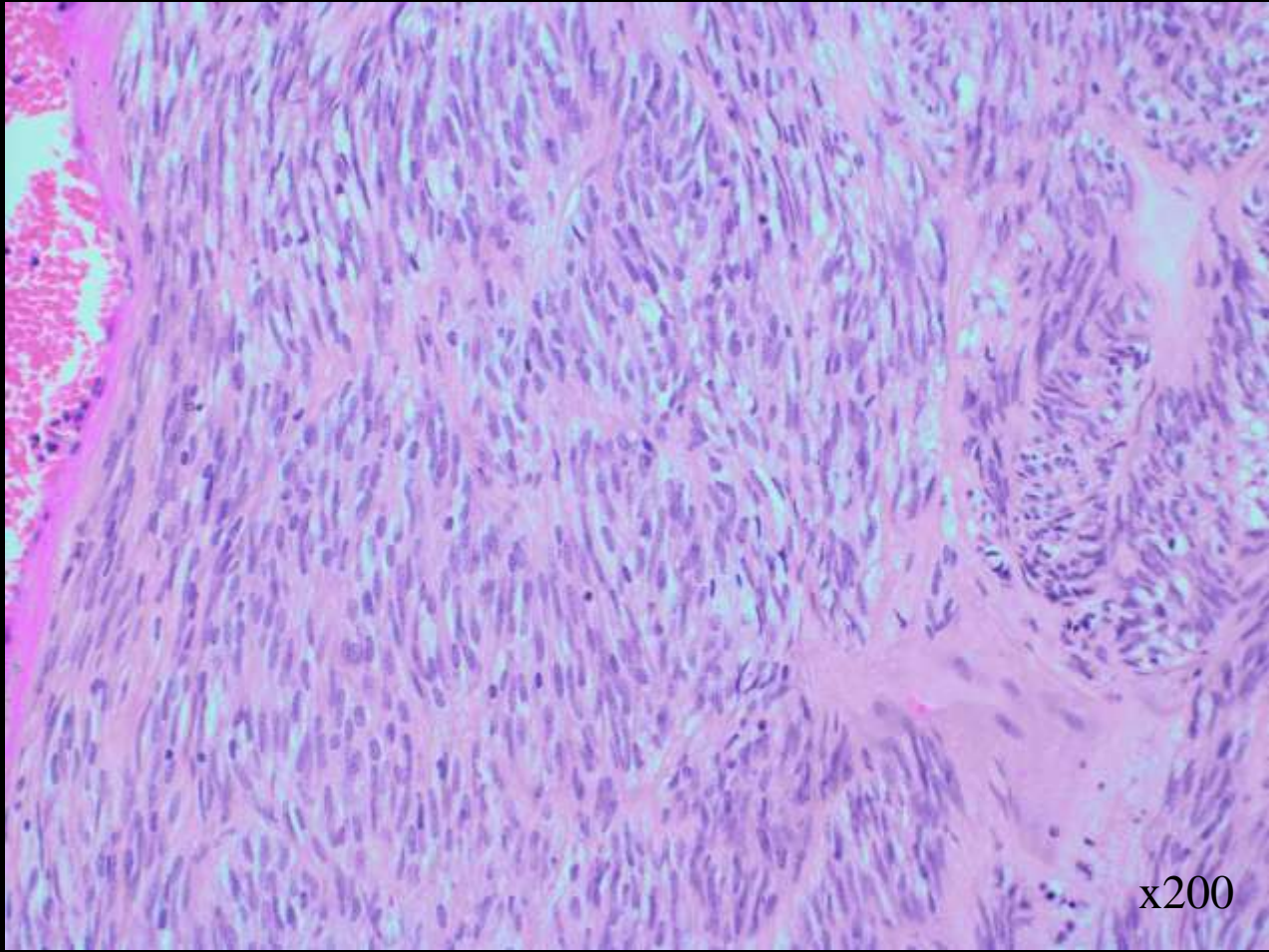
- 60 year old male
  - Isolated lesion in gastric fundus
  - 30 mm in maximum dimension
  - 4 mitoses per 5mm square
  - CD117 & DOG-1 positive
  - SMA negative





x20





# Case E

- Diagnosis:
  - Spindle cell Gastrointestinal Stromal Tumour (GIST)

# Case E

- Responses: 120
  - Score 1
    - 119 – GIST/Spindle cell GIST

# Case E

– Score 2

- 0

– Score 3

- 1 – Malignant GIST/Spindle Cell Sarcoma

# **Scotland and Northern Ireland EQA Scheme**

Circulation 45

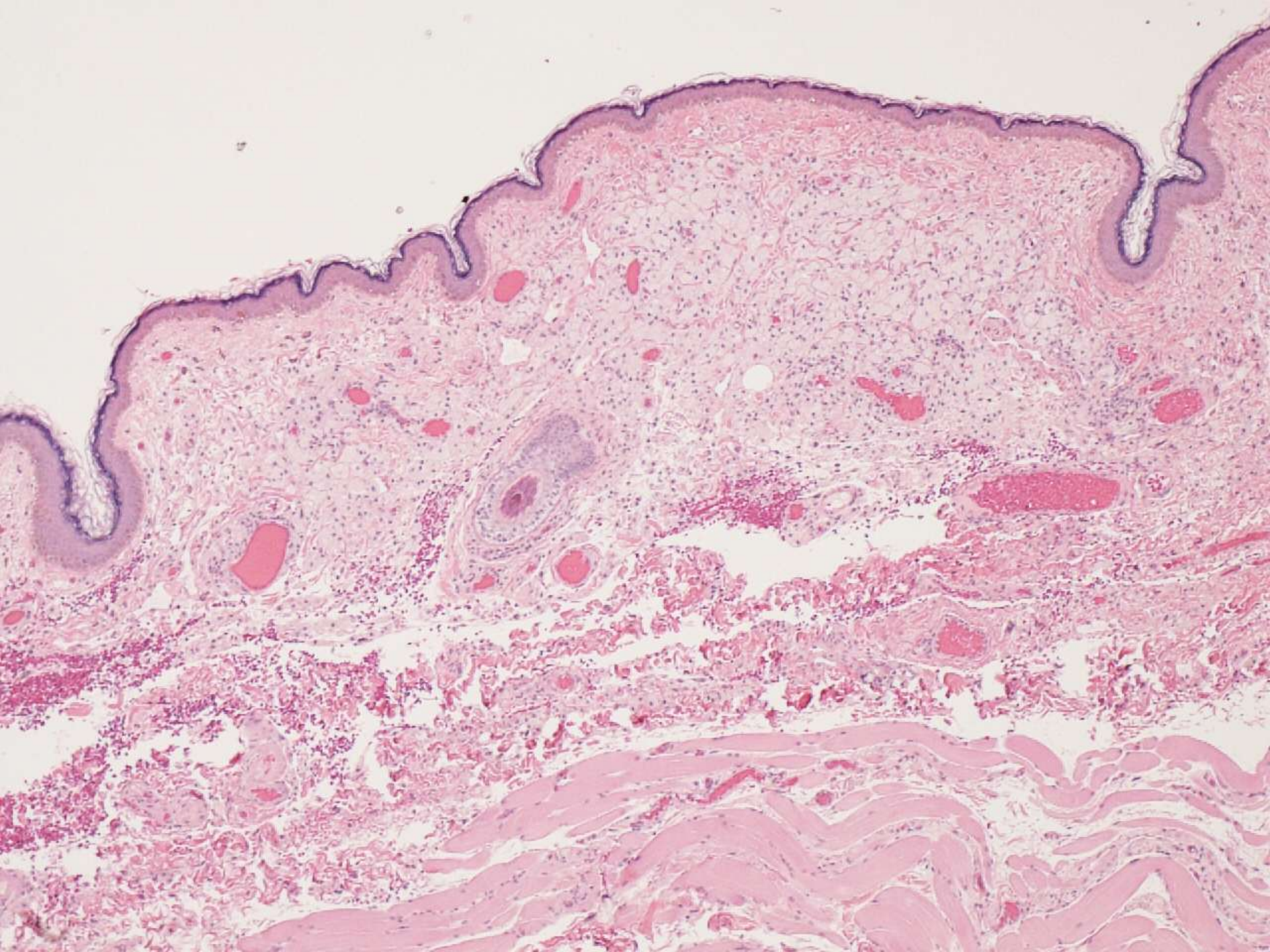
Cases F to J

*Presented by Dr A Chapman*

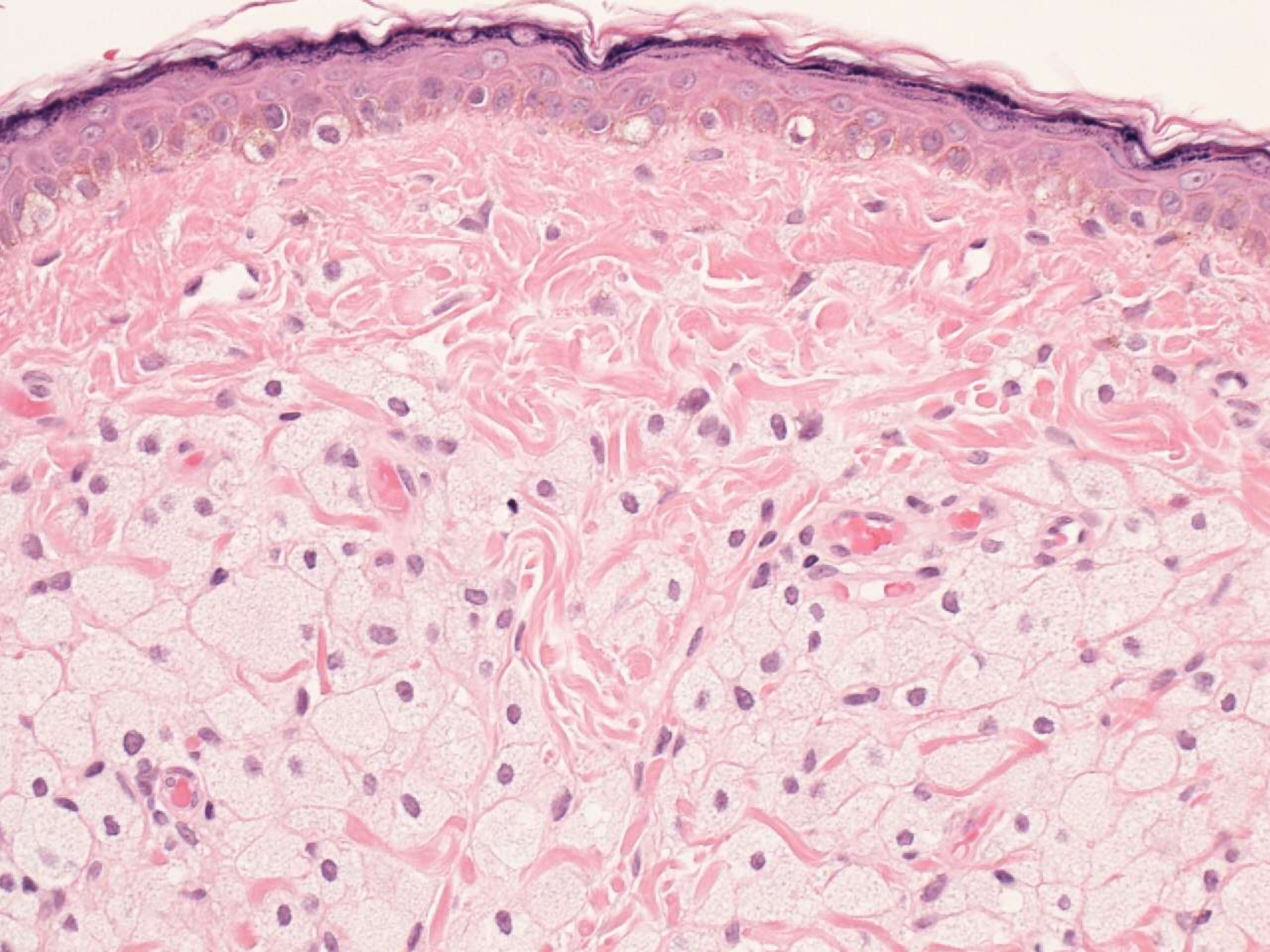
# Case F

- Female 66 years  
    Familial hypercholesterolaemia  
    Skin from left upper eyelid











# Case F

- Diagnosis:  
Xanthelasma

# Case F

- Responses:

Score 1

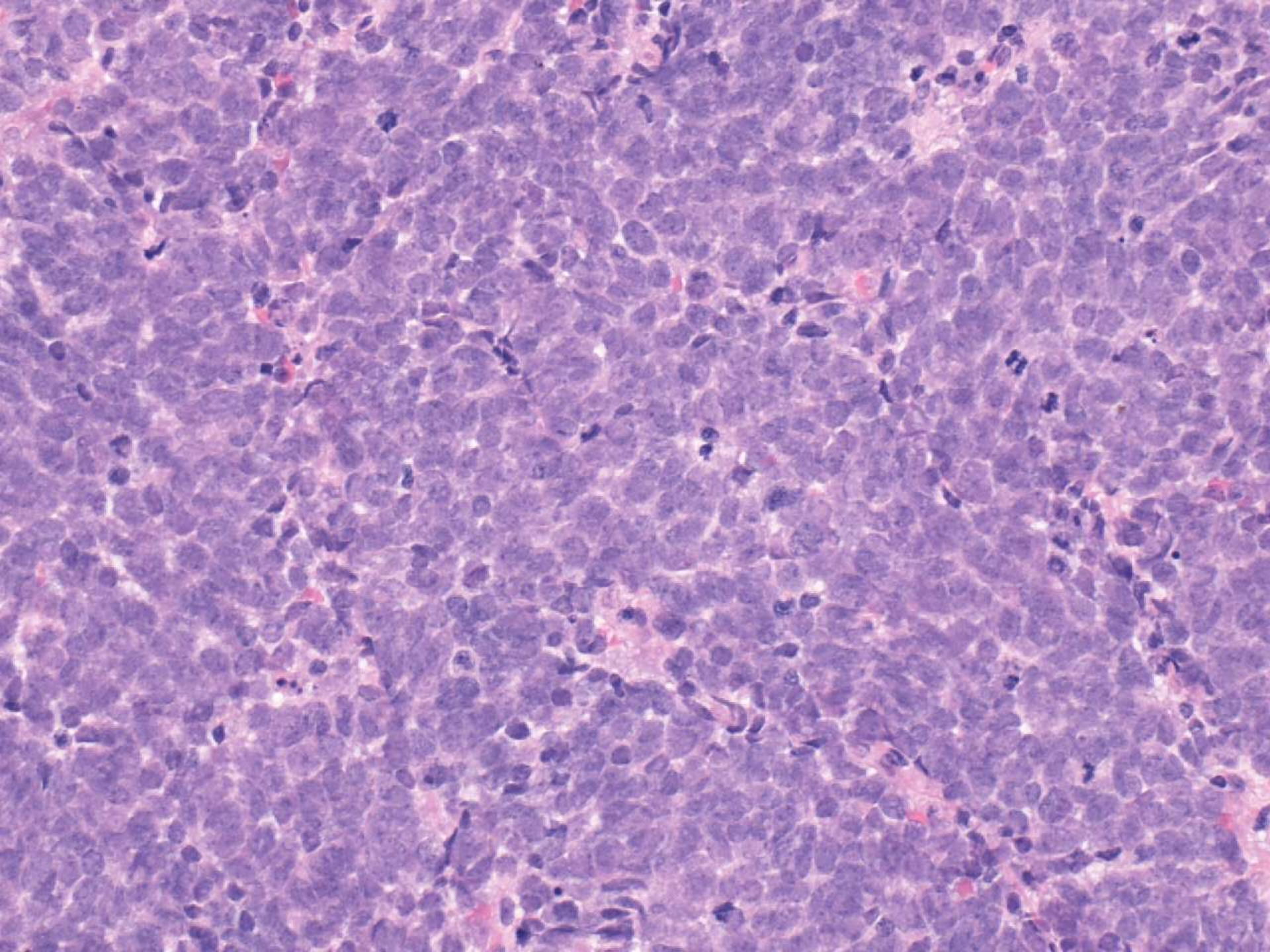
- 120 - xanthelasma/xanthoma

# Case G

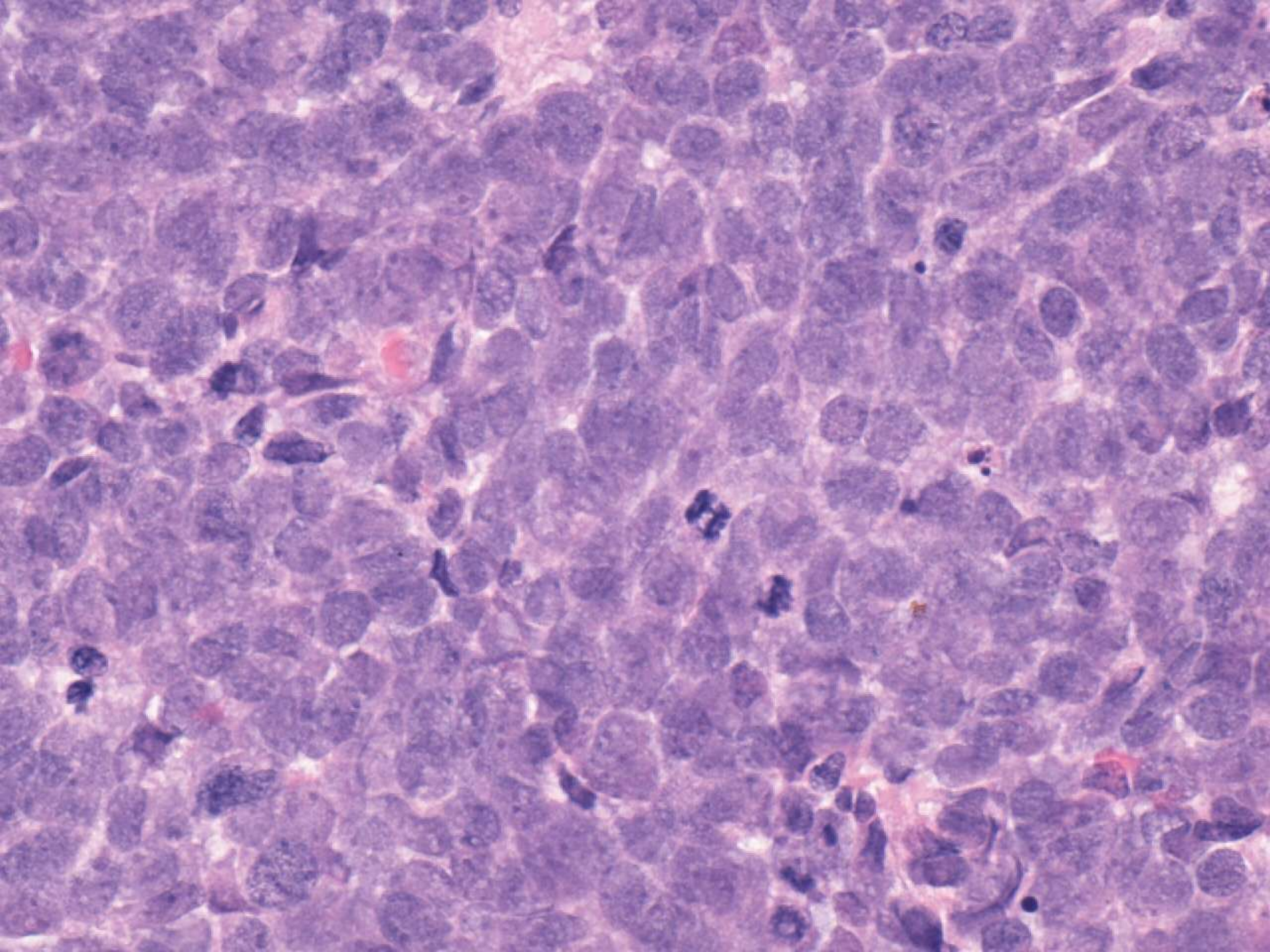
- Female 79 years  
Lesion left pinna, present for a few months











# Case G

- Diagnosis:  
Merkel cell carcinoma



# Case G

- Responses:

Score 1

- 118 - Merkel cell carcinoma (Merkel cell tumour)

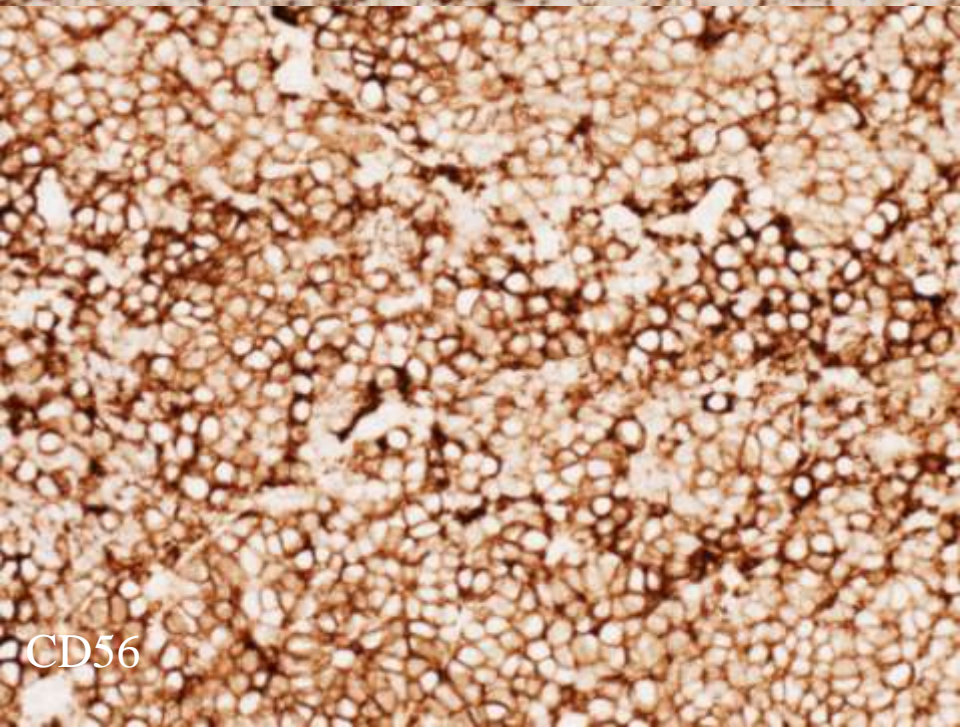
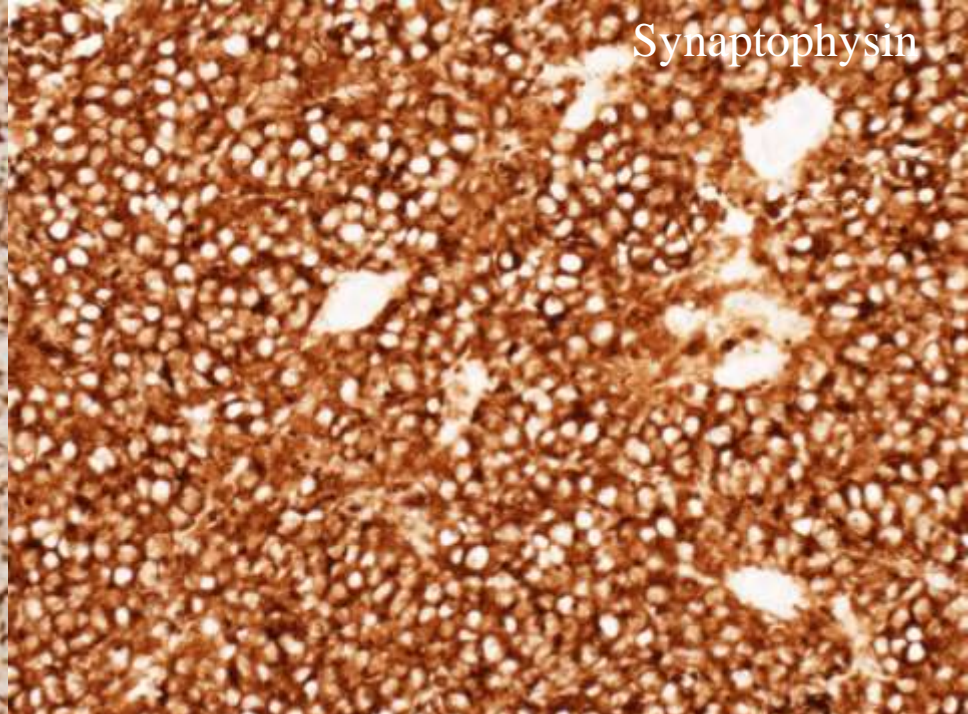
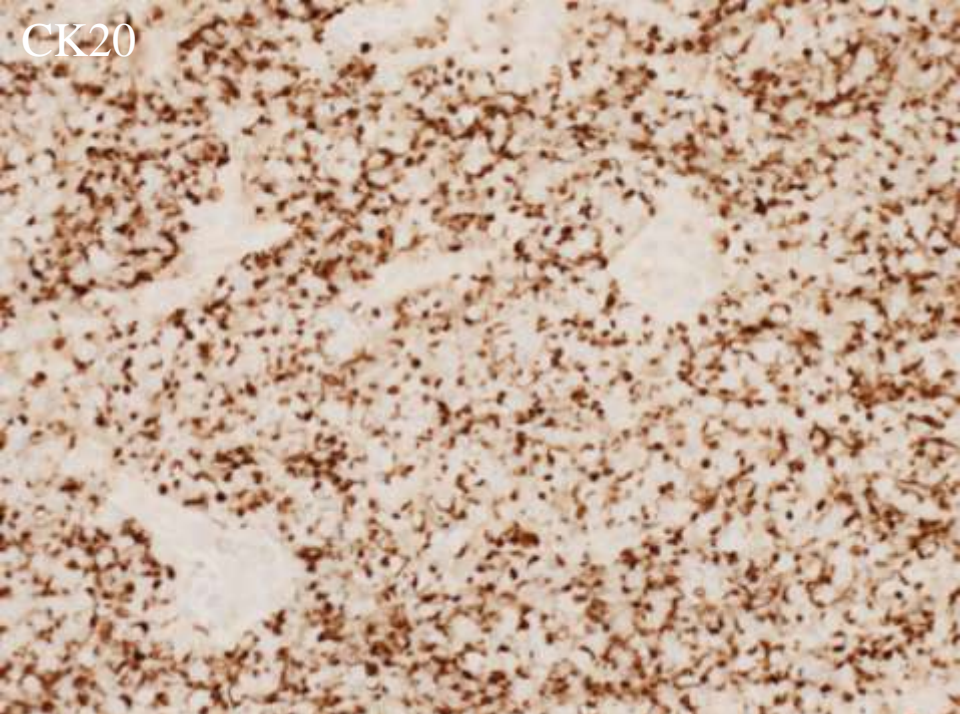
Many specified the need for immunohistochemistry

# Case G

- Responses:

- Score 2

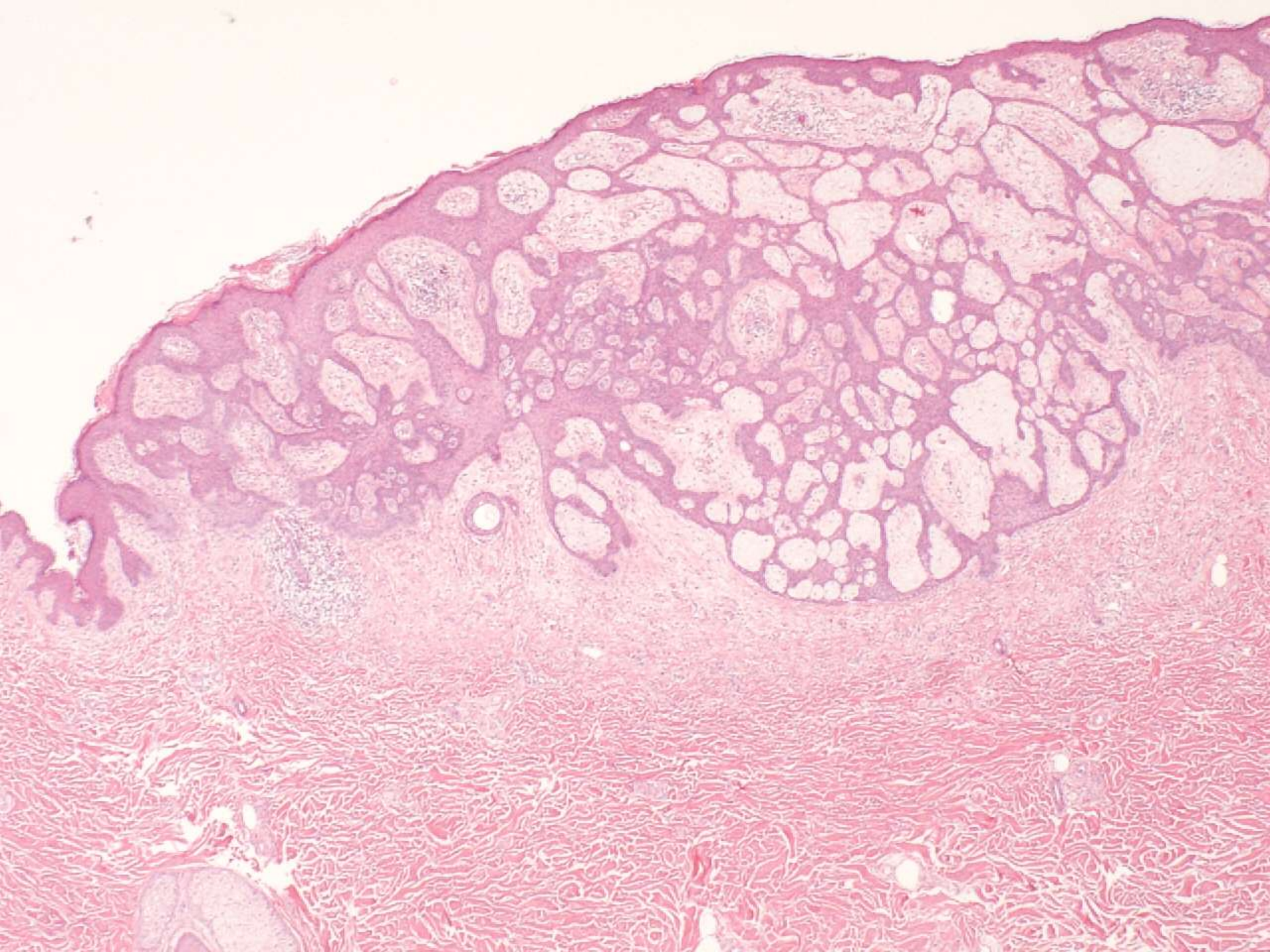
- 1 - Undifferentiated small round blue cell tumour. Need ICC for diagnosis
    - 1 - Invasive malignant tumour plus LVI  
?melanoma ?Merkel



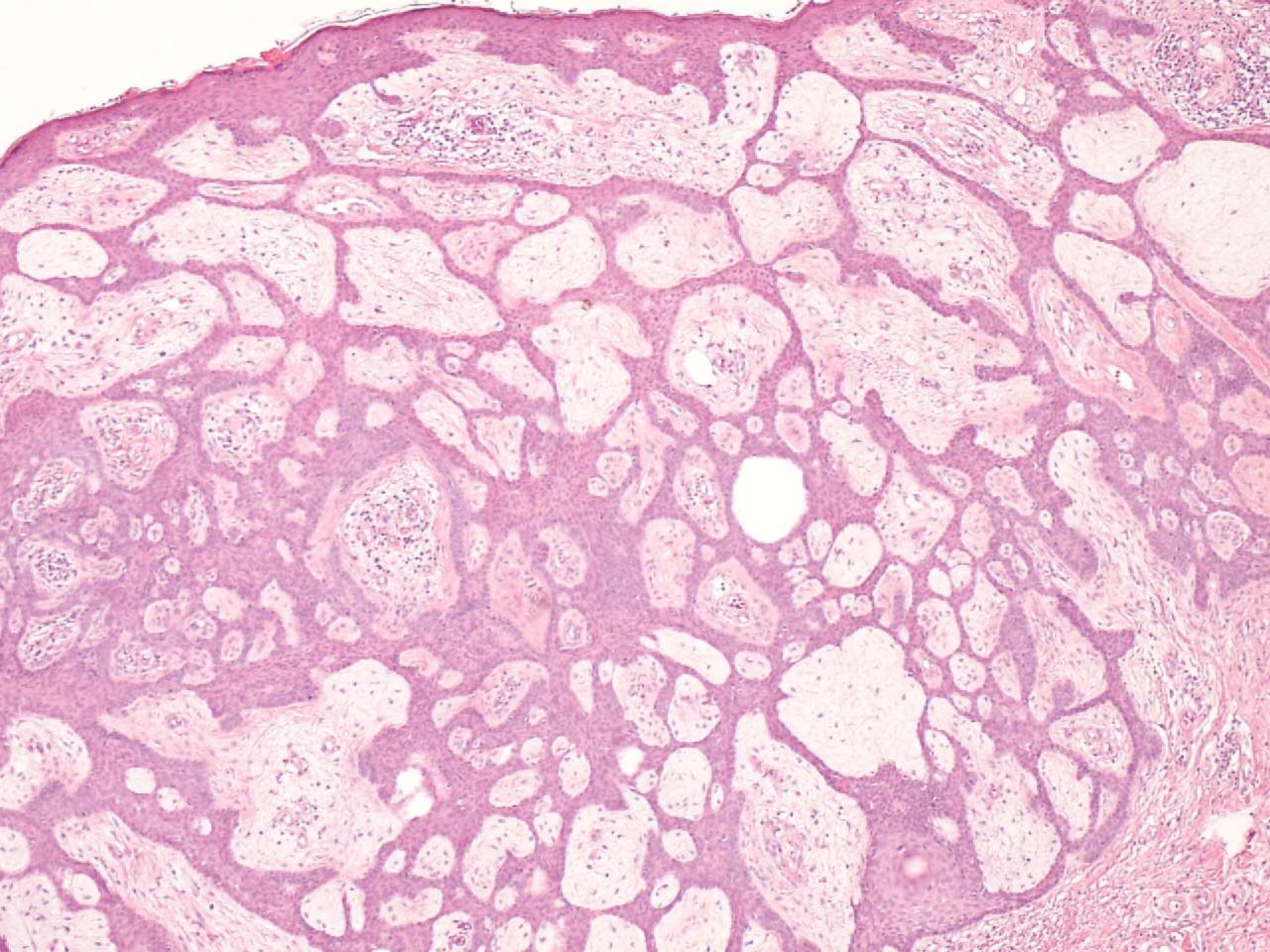
# Case H

- Male 65 years  
Skin lesion right flank

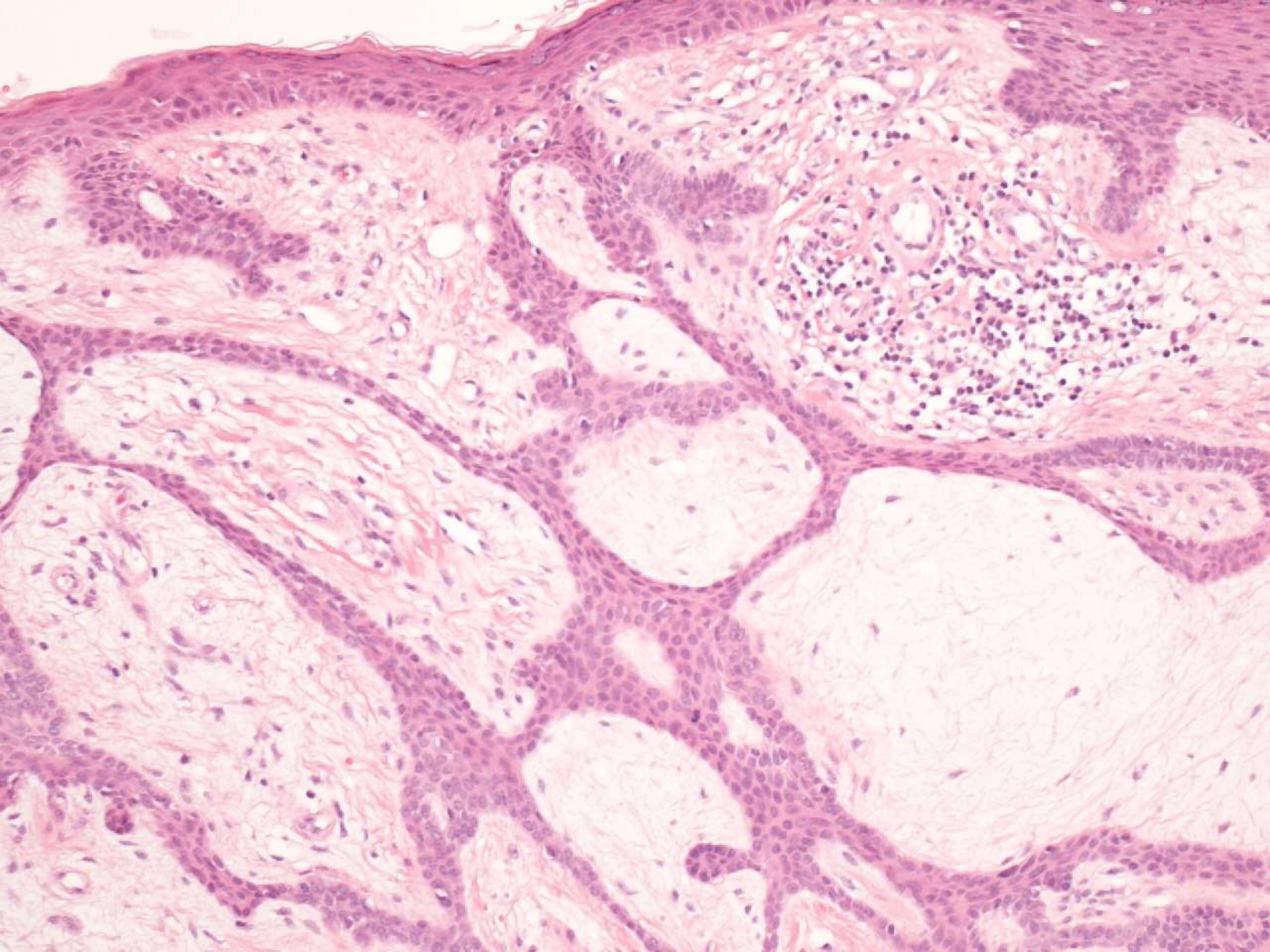














# Case H

- Diagnosis:  
Fibroepithelioma of Pinkus

# Case H

- Responses:

Score 1

- 113 - Fibroepithelioma of Pinkus/Pinkus tumour/Fibroepithelial variant BCC
- 1 - Pinkus tumour Dif Dx follicular infundibulum tumour

# Case H

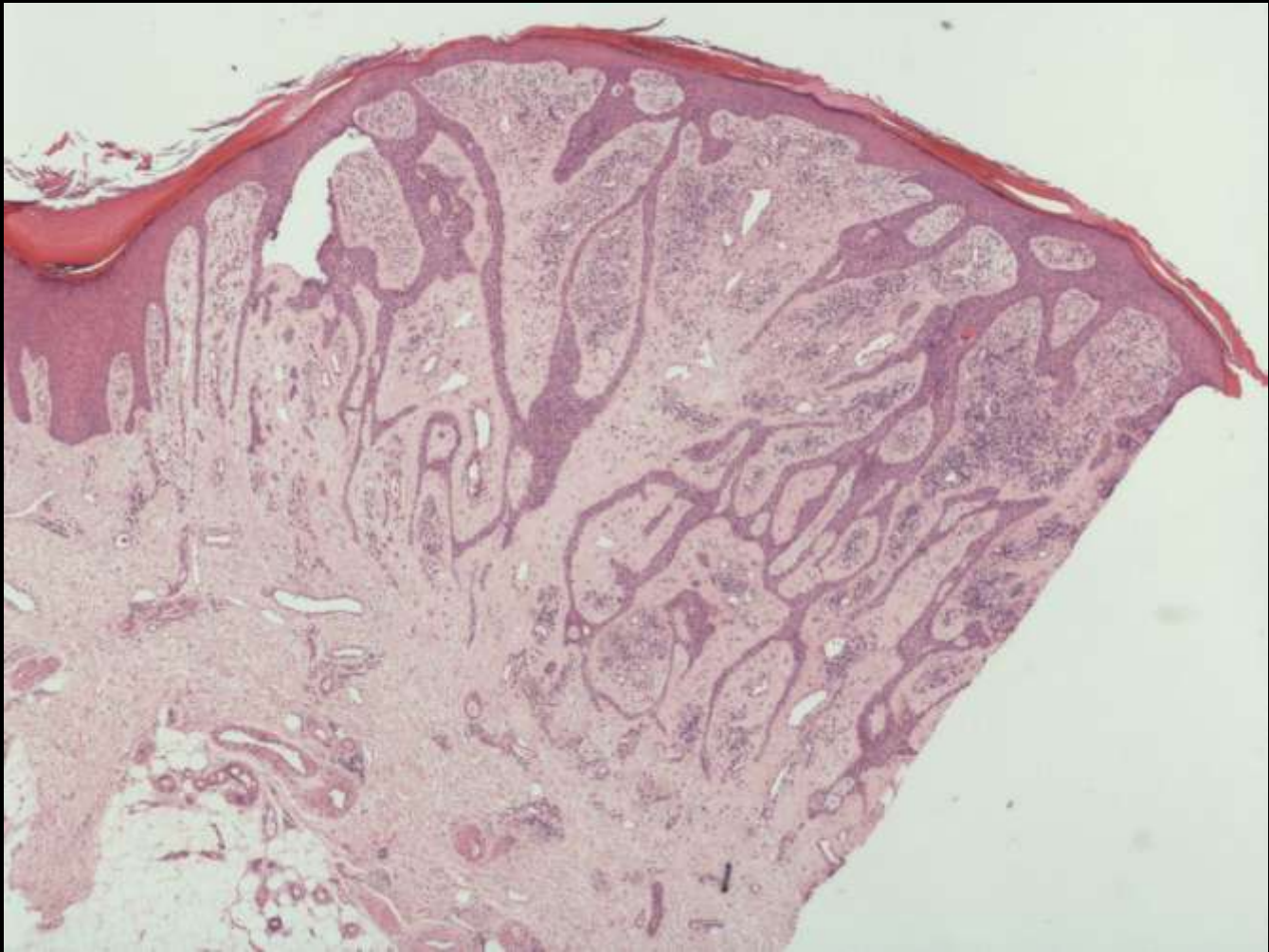
- Responses:

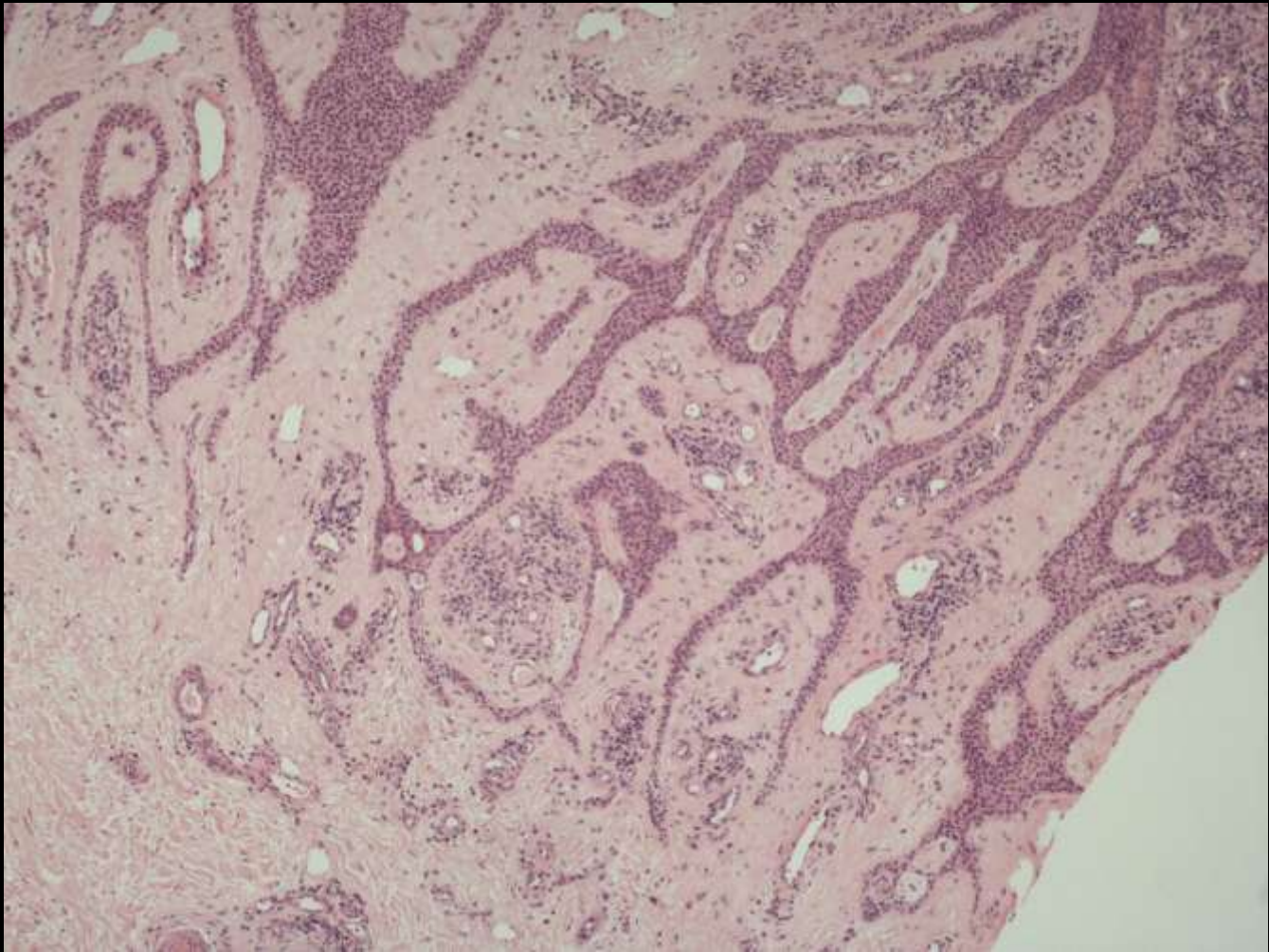
- Score 2

- 1 - Irritated seborrhoeic keratosis/inverted follicular keratosis/Pinkus
    - 1 - Basal cell carcinoma
    - 1 - Fibroepithelioma of Pinkus vs eccrine syringofibroadenoma, favour latter

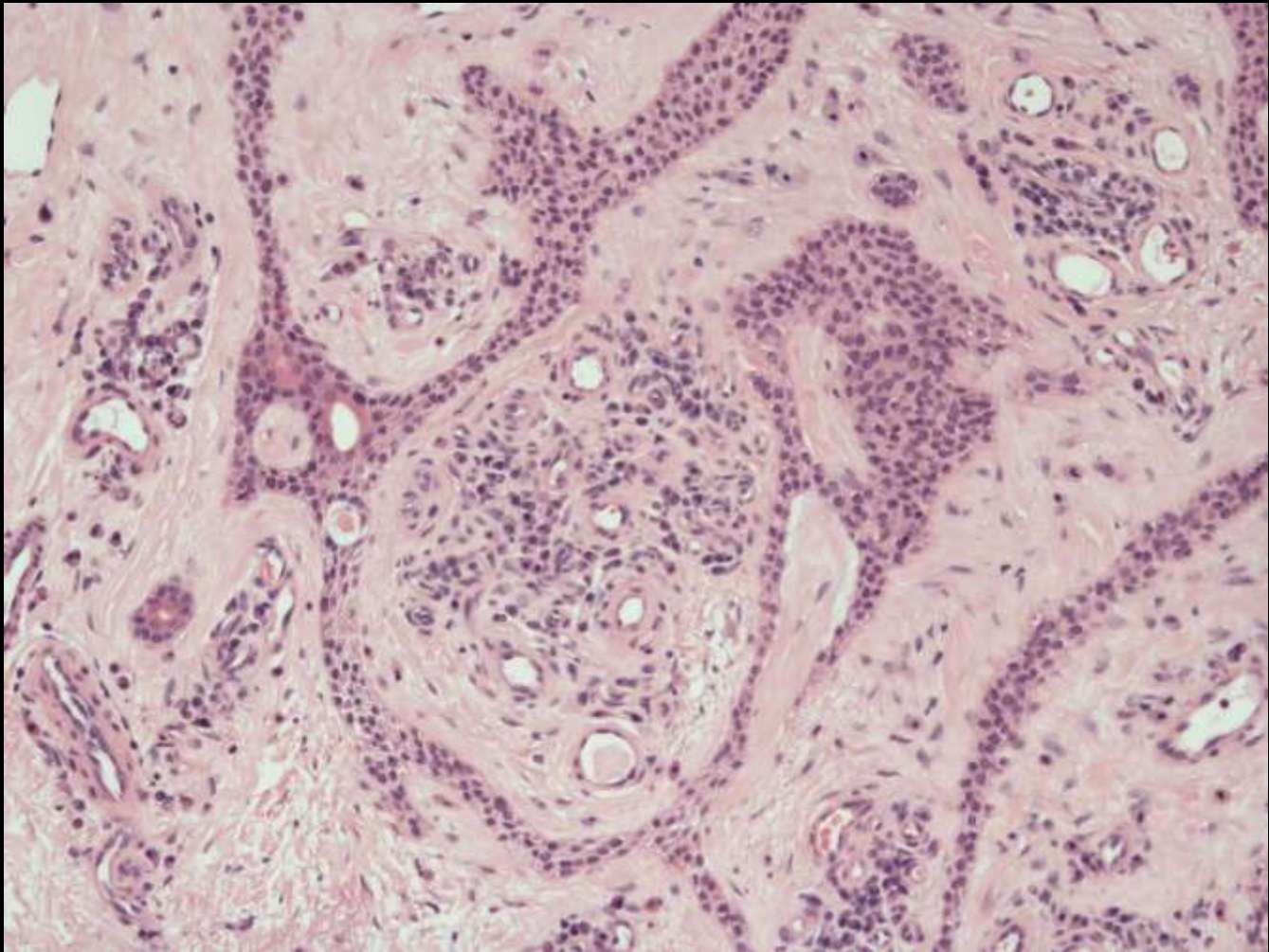
- Score 3

- 1 - Syringofibroadenoma
    - 1 - Eccrine syringofibroadenoma
    - 1 - BCP







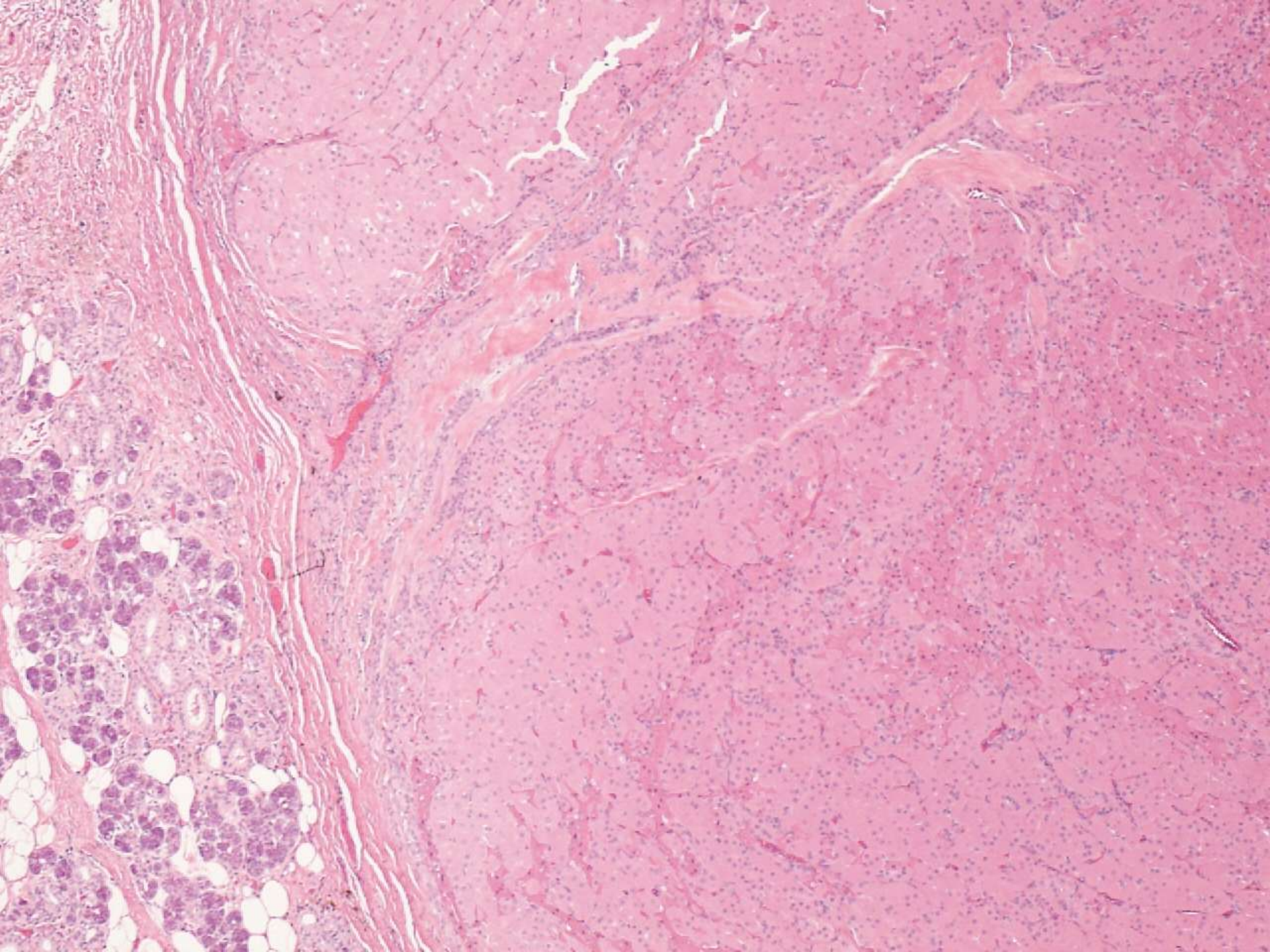


# Case I

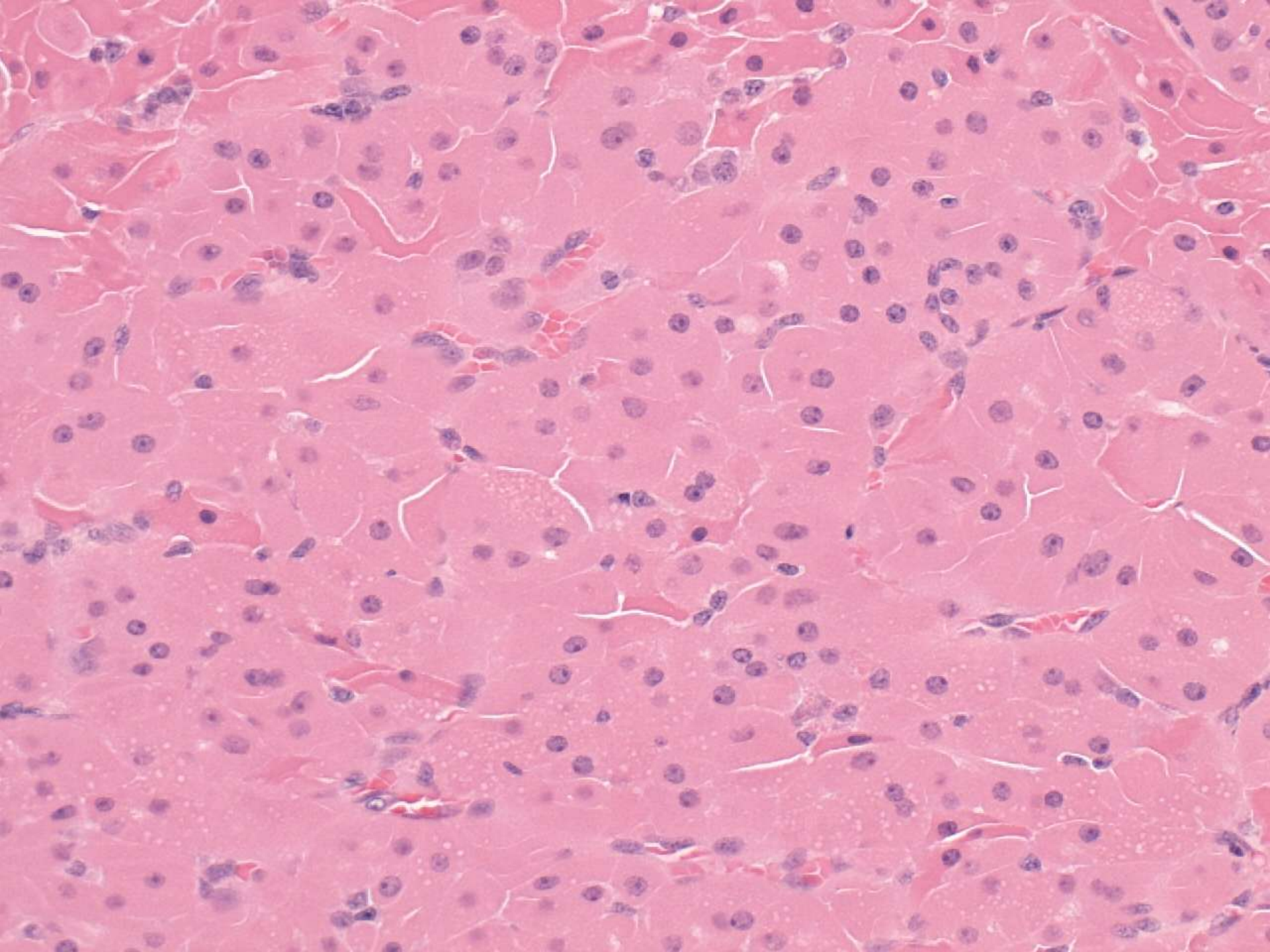
- Male 86 years

Left superficial parotidectomy for mass in tail of left parotid gland









# Case I

- Diagnosis:  
Oncocytoma

# Case I

- Responses:

Score 1

- 118 - Oncocytoma (oxyphilic adenoma)

# Case I

- Responses:

Score 2

- 1 - Oncocytic tumour of salivary glands
- 1 - Nodular oncocytic hyperplasia

# Case J

- Female 76 years  
Right unilateral nasal polyp

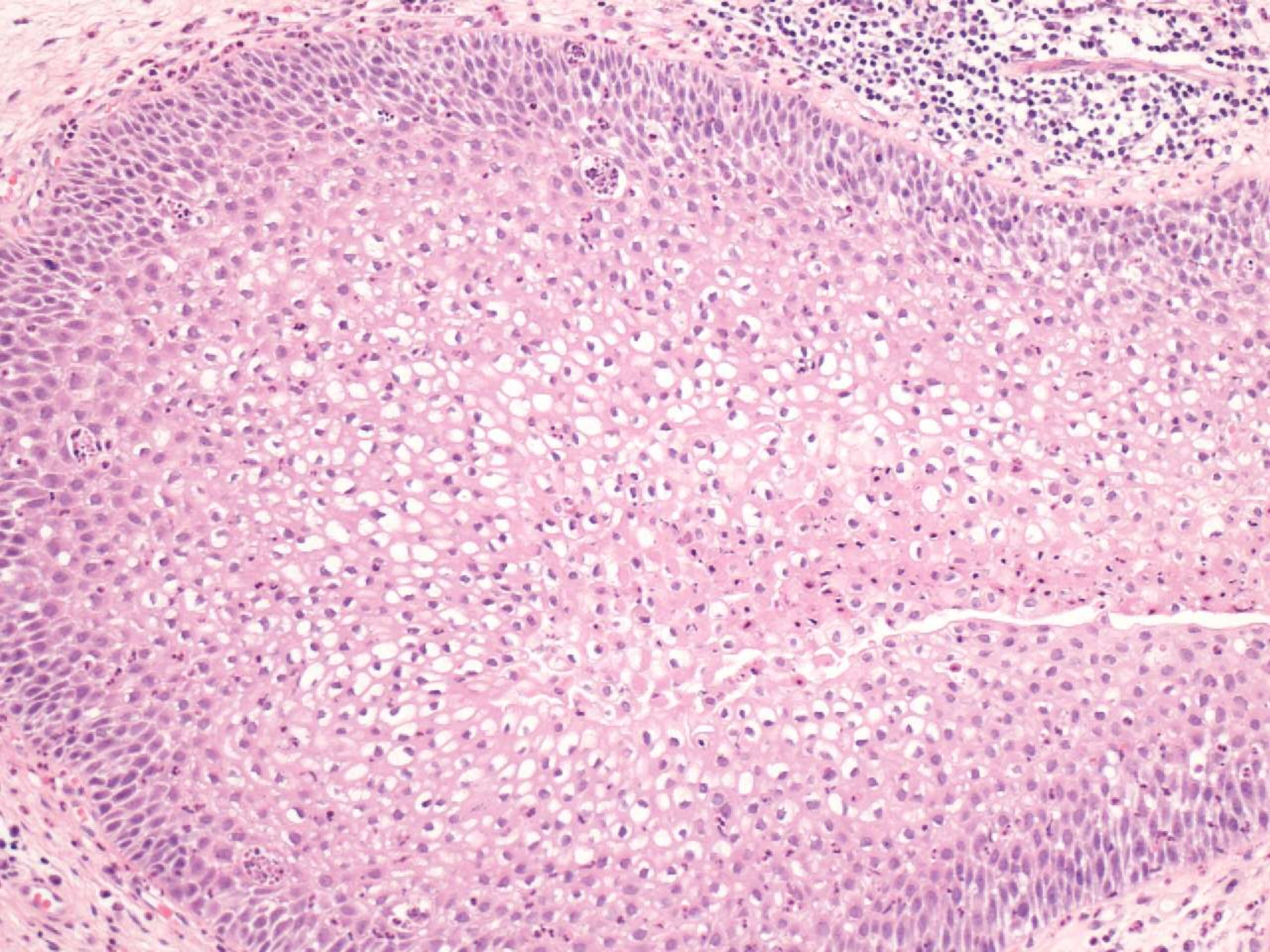












# Case J

- Diagnosis:  
Inverted papilloma

# Case J

- Responses:

Score 1

- 119 - Inverted papilloma  
(Schneiderian/transitional/sinonasal papilloma)



# Case J

- Responses:  
Score 2
  - 1 - Inflammatory nasal polyp